

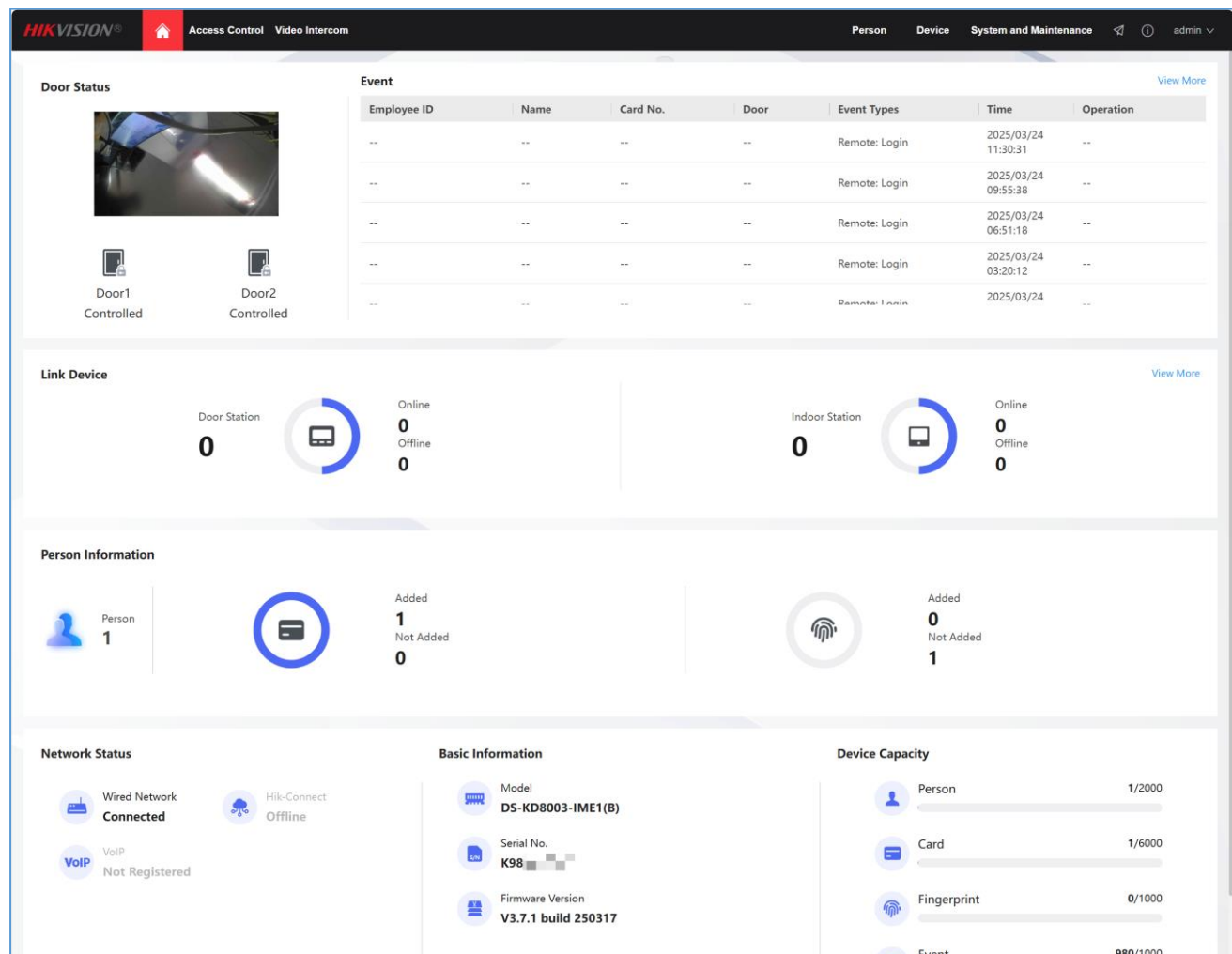
# KD8 (-B) Modular Door Station(Main Module)

## Release Note (2025-07-10)

| Device Model                                                                                                                                                                                               | Firmware Version   |
|------------------------------------------------------------------------------------------------------------------------------------------------------------------------------------------------------------|--------------------|
| DS-KD8003-IME1(B), DS-KD8003-IME1(B)/Surface<br>DS-KD8003-IME1(B)/Flush, DS-KD8003-IME1(B)/S<br>DS-KD8003-IME1(B)/NS, DS-KD8003Y-IME2<br>DS-KD8003Y-IME2/S, DS-KD8003Y-IME2/NS<br>DS-KIS602(B), DS-KIS702Y | V3.7.1_build250709 |
| DS-KD-TDE, DS-KD-TDM                                                                                                                                                                                       | V1.0.2_build250315 |
| DS-KD-MFB                                                                                                                                                                                                  | V1.0.1_build250513 |

### New Features

1. Update to new webpage UI



2. Support Hik-Connect function (only support Hik-Connect Team mode), add device to and manage in Hik-Connect Team and Hik-Partner Pro app.

The screenshot displays the Hikvision web interface for configuring the Hik-Connect function. The interface includes a top navigation bar with 'Person', 'Device', and 'System and Maintenance' tabs. The left sidebar shows the 'System Configuration' menu with 'Device Access' selected. The main content area is titled 'Hik-Connect' and contains the following fields and sections:

- Enable:** A toggle switch is currently turned on. Below it, a note states: "The Hik-Connect service will require internet access. Please read the [Terms of Service](#) and [Privacy Policy](#) before enabling the service."
- Server IP Address:** A text input field.
- Custom:** A checkbox.
- \*Verification Code:** A text input field with a microphone icon.
- Registration Status:** Shows 'Offline' with a 'Refresh' button.
- Save:** A red button.
- Account Binding:** A section with a red error message: "The device is not connected to Hik-Connect network. Connect to network first and bind account again."
- Binding Status:** Shows 'Not Bound' with a 'Refresh' button.

Below the 'Binding Status' section, a note states: "The status will be updated after device is connected to network. View the binding status again after connecting the device to network."

3. Support PIN code and 2 modes: Device-Set Personal PIN and Platform-Applied PIN. **And the input format on keypad is same as public password: #PIN#**

*Note: a) When it 's in platform mode, the PIN can only be configured from iVMS-4200, HikCentral and Hik-Connect Team mode.*

*b) If only single device, it's recommend to use Device-Set Personal PIN, which is easier to configure from webpage; If multiple devices, it's recommend to use Platform-Applied PIN and manage personnel and PIN from software and duplicate PIN is not allowed*

*c) If you want to add personal PIN from indoor station, please make sure the mode is platform-applied personal pin.*

**HIKVISION** Access Control Video Intercom

Door Parameters Smart Card Settings **Privacy Settings** Password Settings

**Event Storage Settings**

Event Storage Type ☐ Delete Old Events Periodically  
☐ Delete Old Events by Specified Time  
☒ Overwrite

**Picture Uploading and Storage**

Upload Picture When Auth. ☐

If enabled, the captured picture when authentication will be uploaded to the platform automatically.

**PIN Mode**

PIN Mode ☐ Platform-Applied Personal PIN [i](#) ☒ Device-Set Personal PIN [i](#)

Save

4. Support Access Schedule and the verification will only work during the valid time period.

**HIKVISION** Access Control Video Intercom Person Device System and Maintenance admin

**Access Schedule** Holiday Schedule

+ Add Delete

All-Day Template  
 Workday Template  
 Weekend Template

**Basic Information**

Name All-Day Template

**Weekly Schedule**

Weekly Schedule ☒ Access Time Period

|     | 00:00              | 02:00 | 04:00 | 06:00 | 08:00 | 10:00 | 12:00 | 14:00 | 16:00 | 18:00 | 20:00 | 22:00 |
|-----|--------------------|-------|-------|-------|-------|-------|-------|-------|-------|-------|-------|-------|
| Sun | Access Time Period |       |       |       |       |       |       |       |       |       |       |       |
| Mon | Access Time Period |       |       |       |       |       |       |       |       |       |       |       |
| Tue | Access Time Period |       |       |       |       |       |       |       |       |       |       |       |
| Wed | Access Time Period |       |       |       |       |       |       |       |       |       |       |       |
| Thu | Access Time Period |       |       |       |       |       |       |       |       |       |       |       |
| Fri | Access Time Period |       |       |       |       |       |       |       |       |       |       |       |
| Sat | Access Time Period |       |       |       |       |       |       |       |       |       |       |       |

5. Support IPv6 network

**TCP/IP**

DHCP ☐

\* IPv4 Address

\* IPv4 Subnet Mask

\* IPv4 Default Gateway

IPv6 Mode ☐ Manual ☐ DHCP ☒ Route Advertisement

[View Route Advertisement](#)

IPv6 Address

IPv6 Subnet Prefix Length

IPv6 Default Gateway

Mac Address

MTU

\* Alarm Center IP

\* Alarm Host Port

**DNS Server**

Preferred DNS Server

Alternate DNS Server

6. Support ONVIF protocol (tested device login, camera live view, remote configuration for the time and password reset)
7. Support H.265 and M.JPEG video format, it's H.264 by default

**Video**

Stream Type ☒ Main Stream ☐ Sub-stream

Video Type ☐ Video Stream ☒ Video&Audio

Resolution

Bit Rate Type ☒ Variable ☐ Constant

Video Quality

Frame Rate

\* Max. Bitrate  Kbps

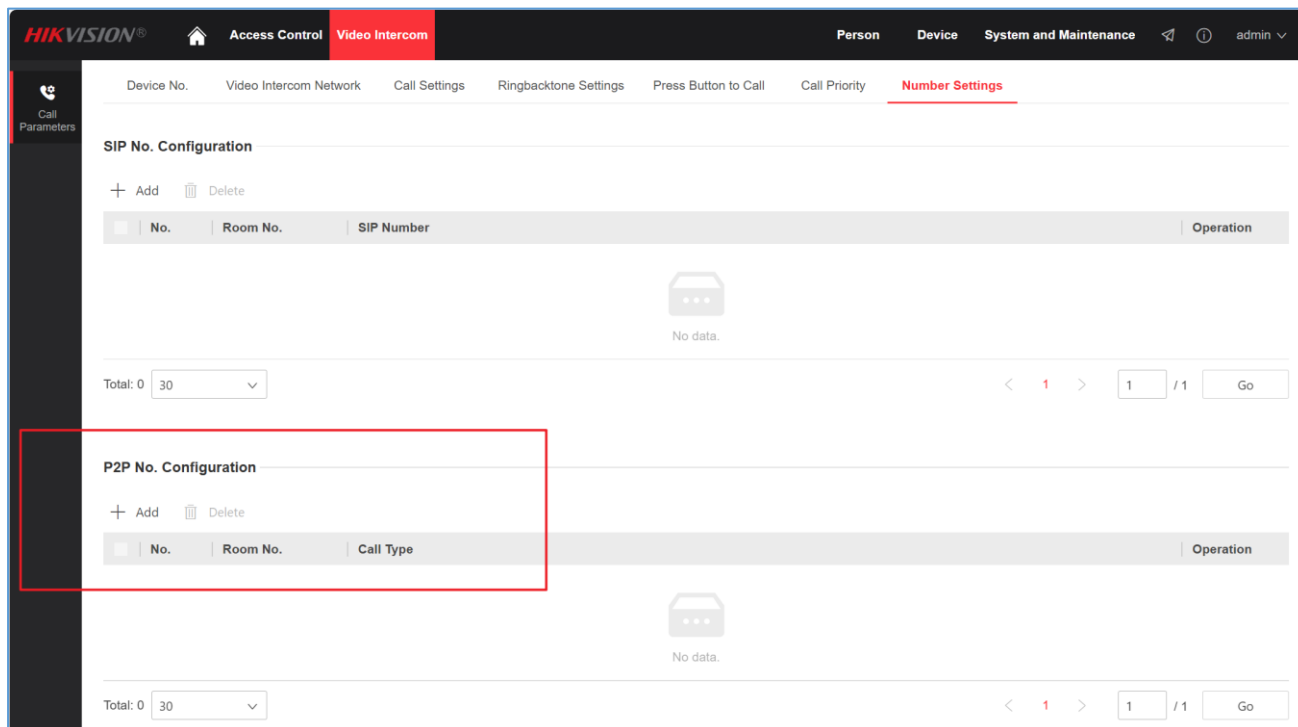
Video Encoding

\* I Frame Interval

8. Add new language *Latin American Spanish* and now support 36 languages in total: English, Arabic, European French, Russian, European Spanish, Latin American Spanish, Italian, German,

Polish, Turkish, Portuguese, Brazilian Portuguese, Uzbek, Kazakh, Czech, Hungarian, Dutch, Romanian, Bulgarian, Ukrainian, Croatian, Serbian, Greek, Lithuanian, Estonian, Latvian, Norwegian, Danish, Slovenian, Slovak, Hebrew, Swedish, Finnish, Mongolian, Vietnamese, Traditional Chinese, Latin American Spanish

## 9. Support P2P call function in standard SIP.

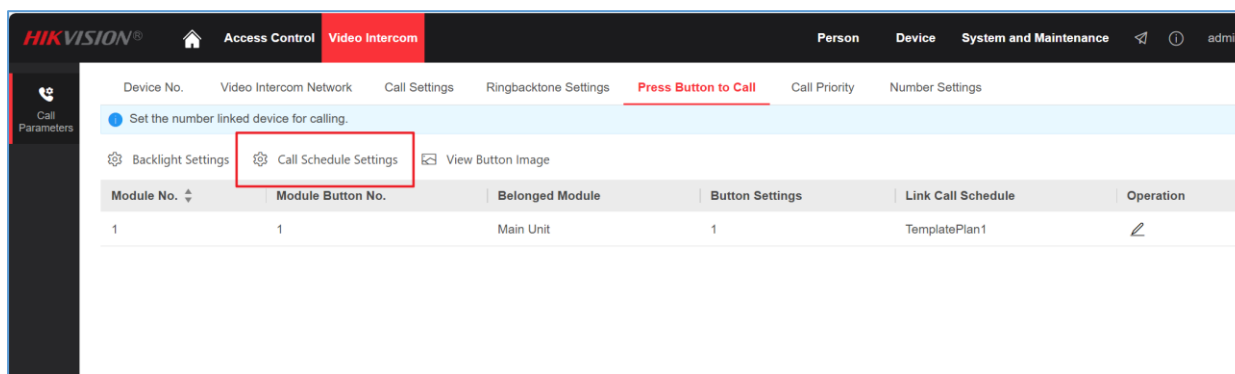


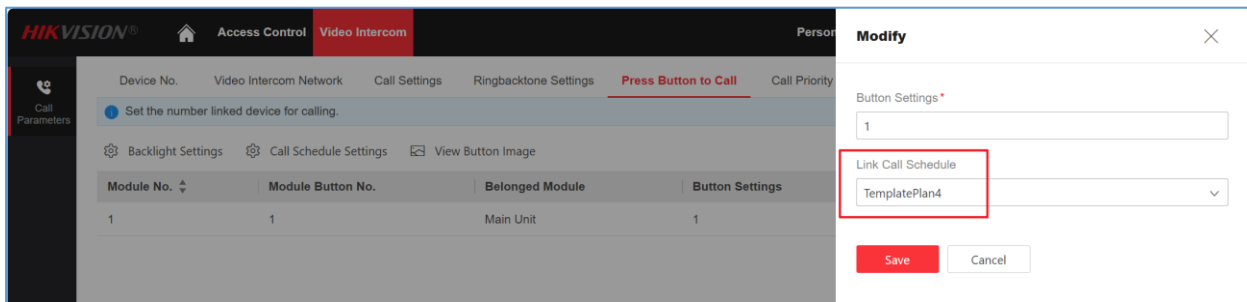
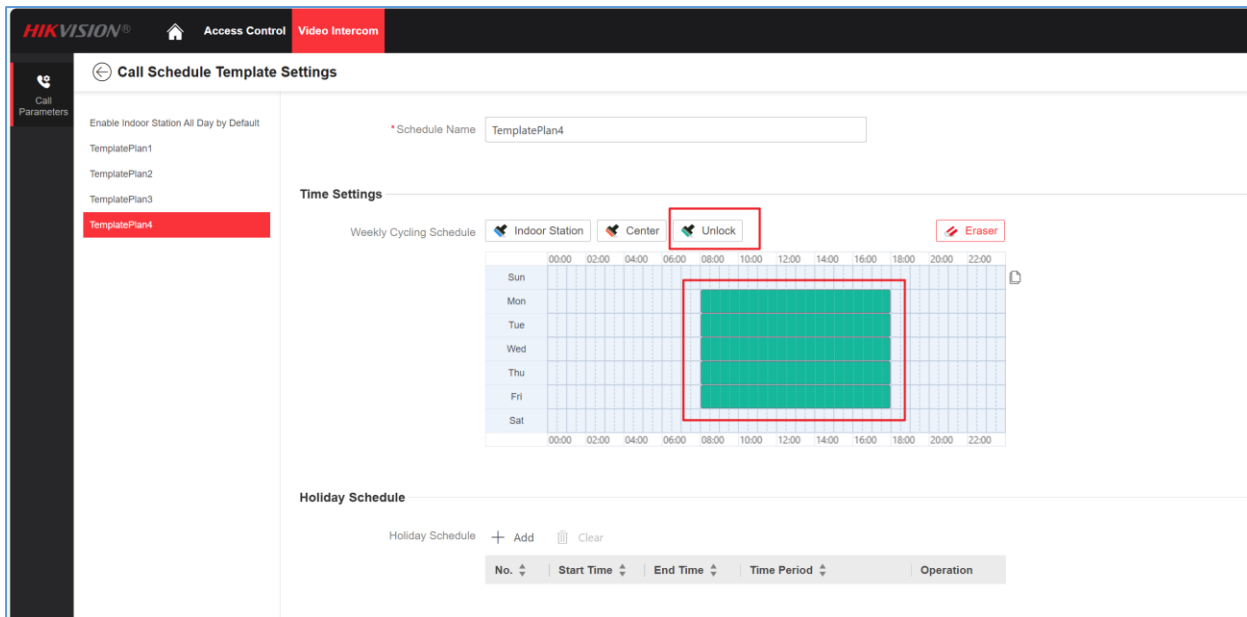
## 10. Support trade button (automatically unlock door after receive call) function.

For example, if you set same schedule as below pictures, the door will unlock automatically after receive the call from button1 between Monday to Friday 8:00-18:00

**Note:**

- 1) Each button (of main module and nametag DS-KD-KK or DS-KD-K12 module) can only be linked to one template only.
- 2) Only lock1 will be open automatically, lock2 doesn't support trade button function.

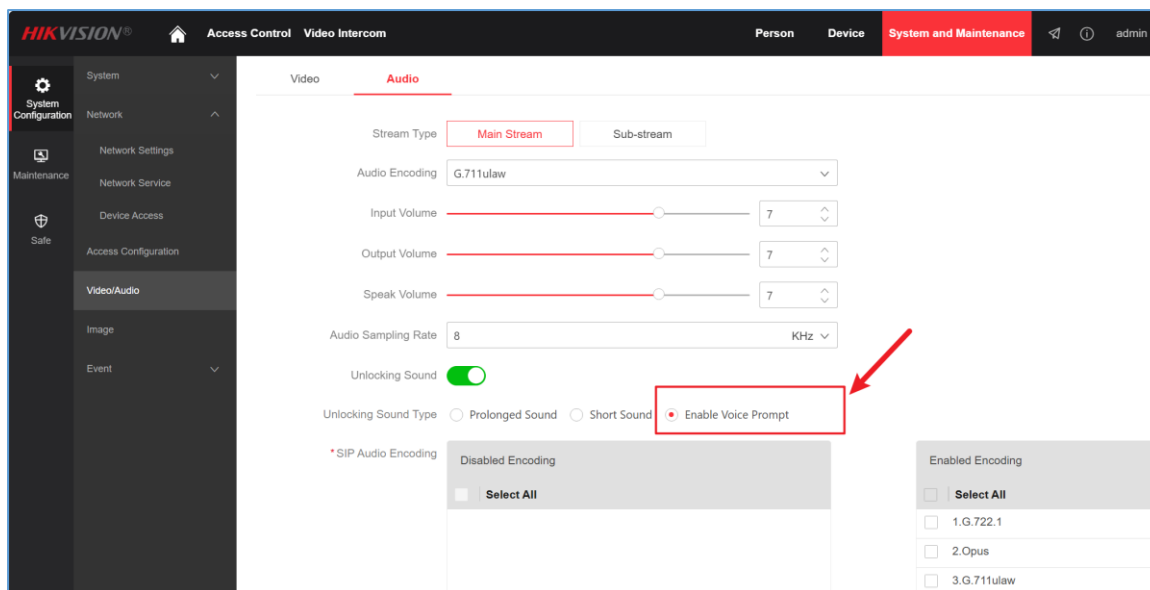




11. Support adding card with master card on DS-KD-MFB sub module, please make sure MFB module firmware is V1.0.1\_build250513 or later.

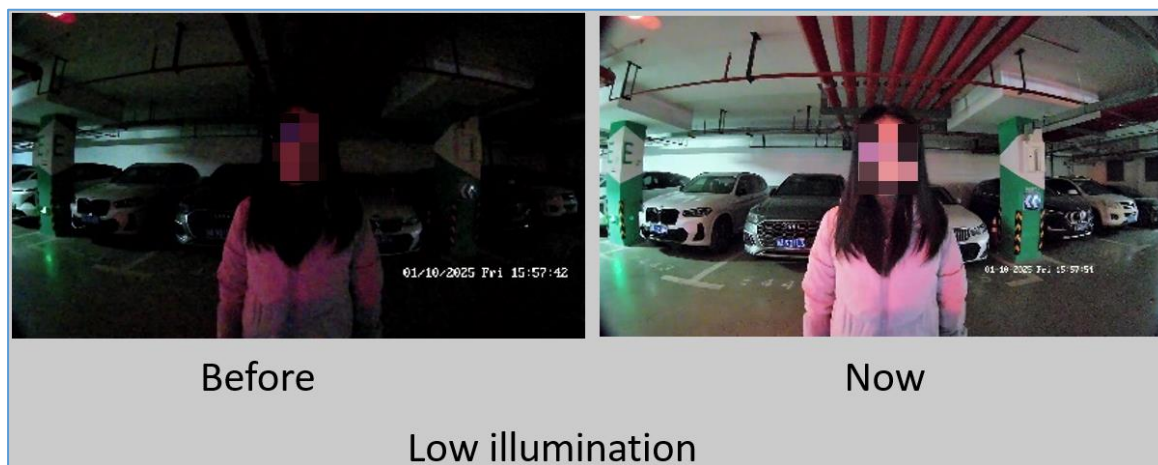
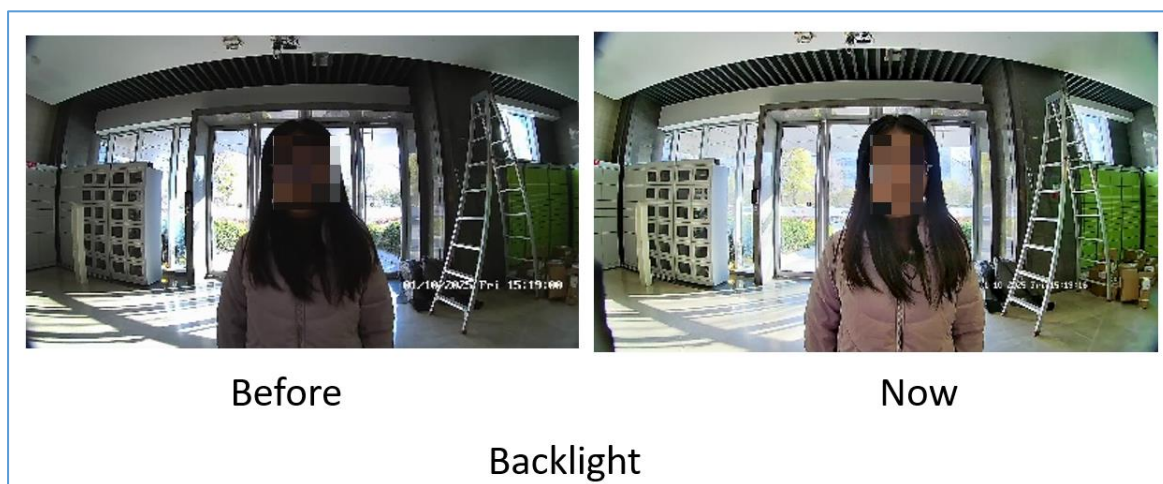
## **Modified Feature:**

1. Add voice prompt “The door is open” back. Now we have 4 options, disable unlocking sound, short beep sound, long beep sound and voice prompt “The door is open”.



## 2. Video quality improvement

- 1) WDR enabled by default.
- 2) Video quality remains clear even when backlit or in low light



### 3. Compatible with more SIP server brands

(1)ASTERISK (2)FreePBX (3)3CX (4)ELASTIX (5)PBXware (6)miniSipServer (7)Brekeke  
(8)OpenSIPs (9)Kamailio (10)Grandstream (11)Yeastar

*Note: Only test registration, calling, auto answer, P2P calling, it's not for other advanced function of SIP server.*

### 4. Support 2 sip lines and input special characters in SIP number settings, including \*.#+=-\_/|0\$?[]{}

The screenshot displays the Hikvision web interface for VoIP configuration. The left sidebar shows the navigation menu with 'System Configuration' expanded. The main content area is titled 'Hik-Connect' and 'VoIP'. A green notification banner at the top indicates 'Save succeeded.'. The configuration fields include:

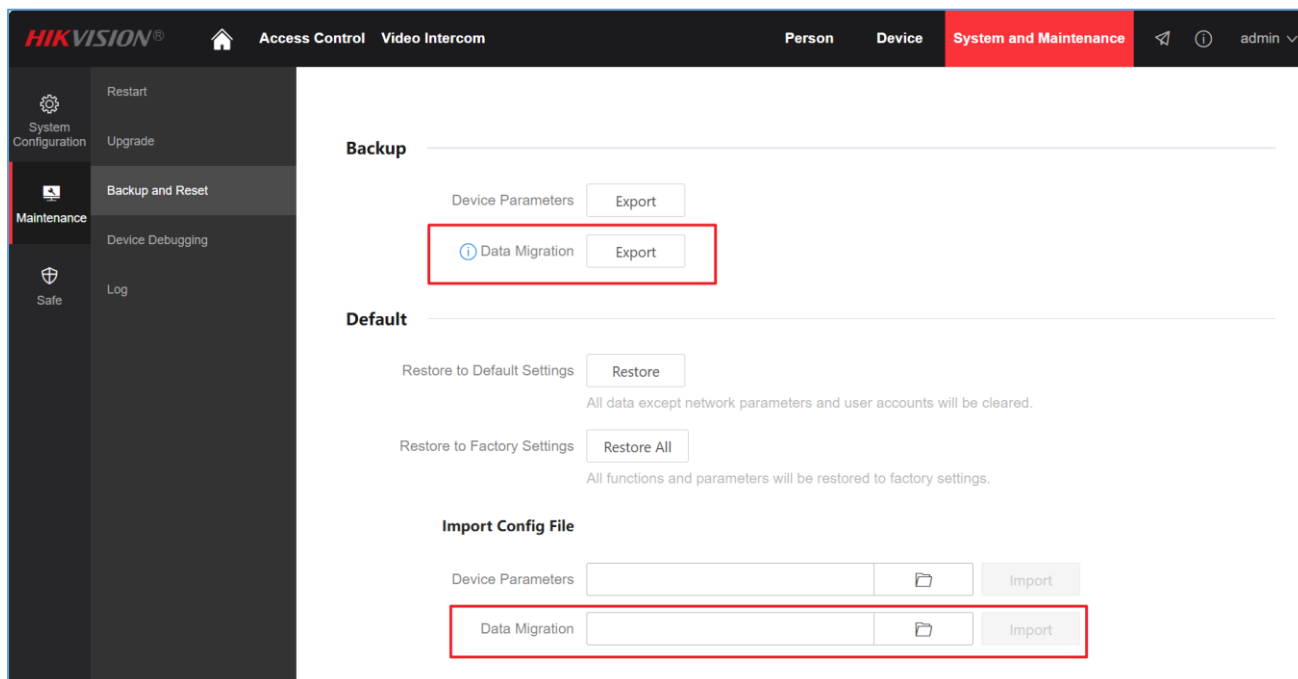
- Select VoIP: VoIP1 (selected), VoIP2
- Enable VoIP Gateway: ☒
- \* Register User Name: 123\*.#+=-\_/|0\$?[]{} (highlighted with a red box)
- \* Registration Password: ...
- \* Server IP Address: 10.9.96.248
- Server Port: 5060
- Expiry Time: 60 min
- Registration Status: Not Registered (with a red error icon) and a Refresh button
- \* Number: 123
- \* Display User Name: 123

### 5. Support data export and import.

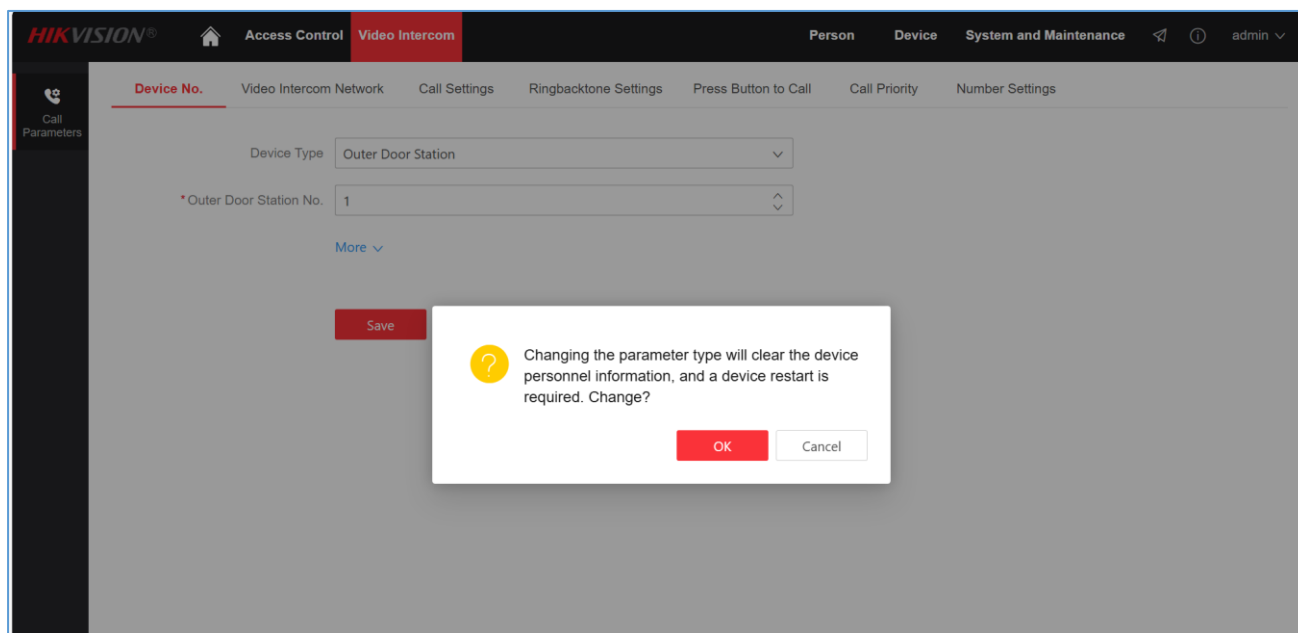
**Note:**

- The data exported and imported devices should share same model and firmware version in case of any data format incompatibility.*
- The data includes user information, door station parameters configuration data, ringtone and etc.*

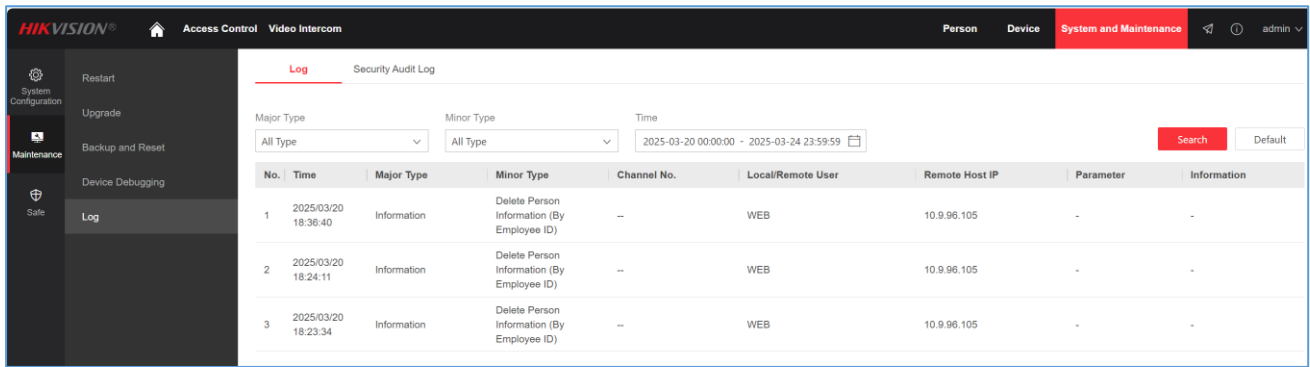




- When changing the device mode between door station and outer door station, all personnel **data will be deleted**, please take care for the data loss, and add the prompt as below picture.

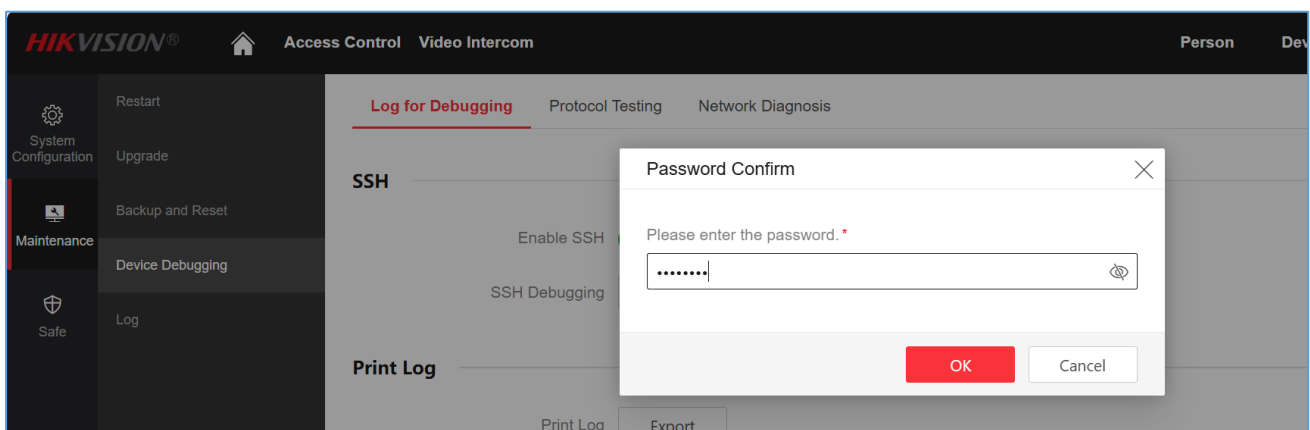
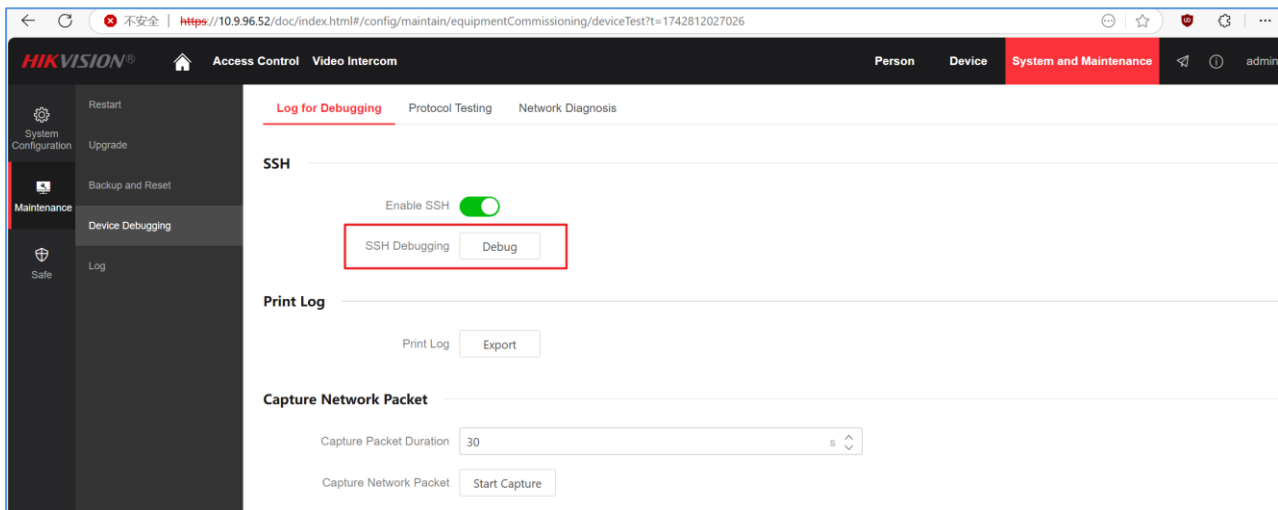


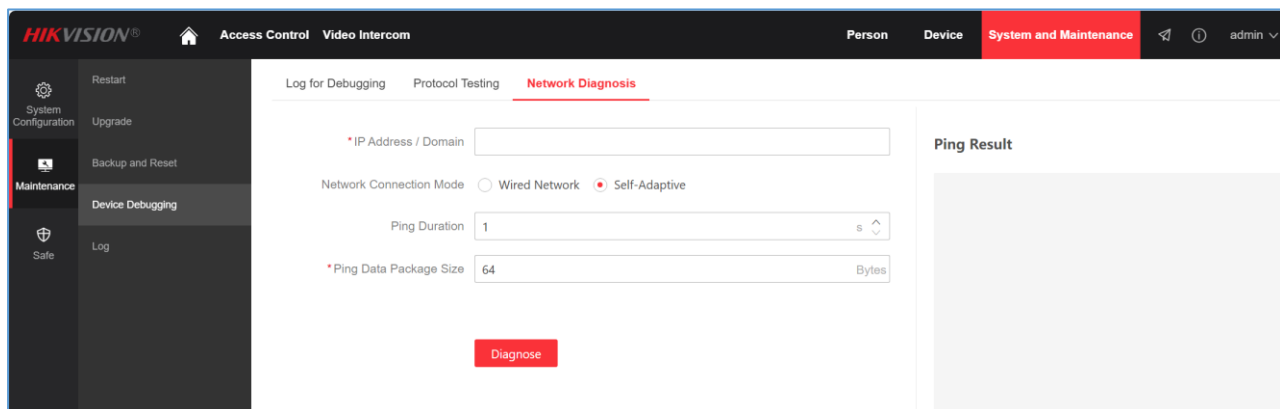
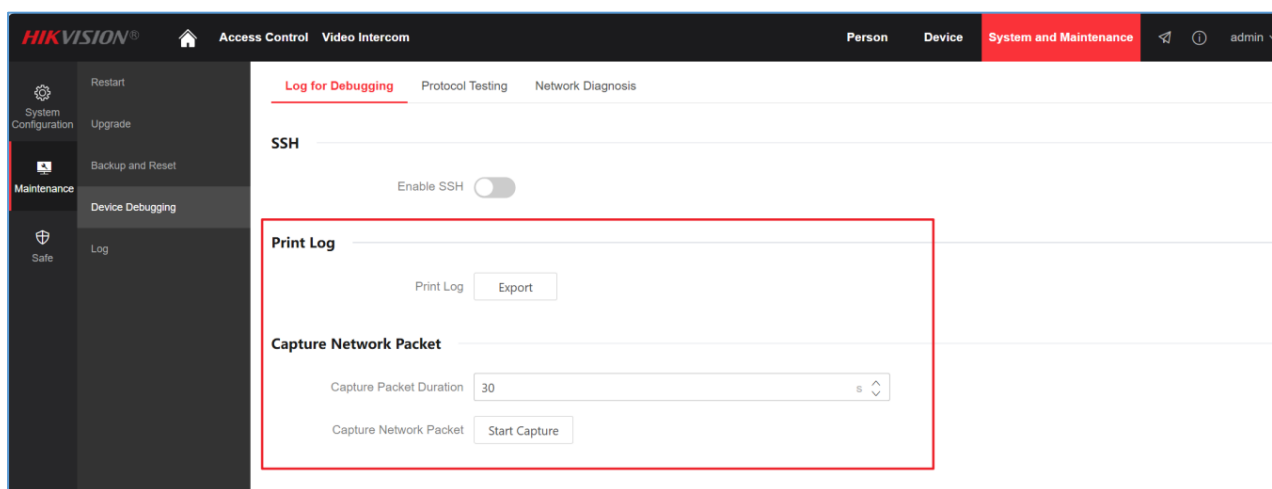
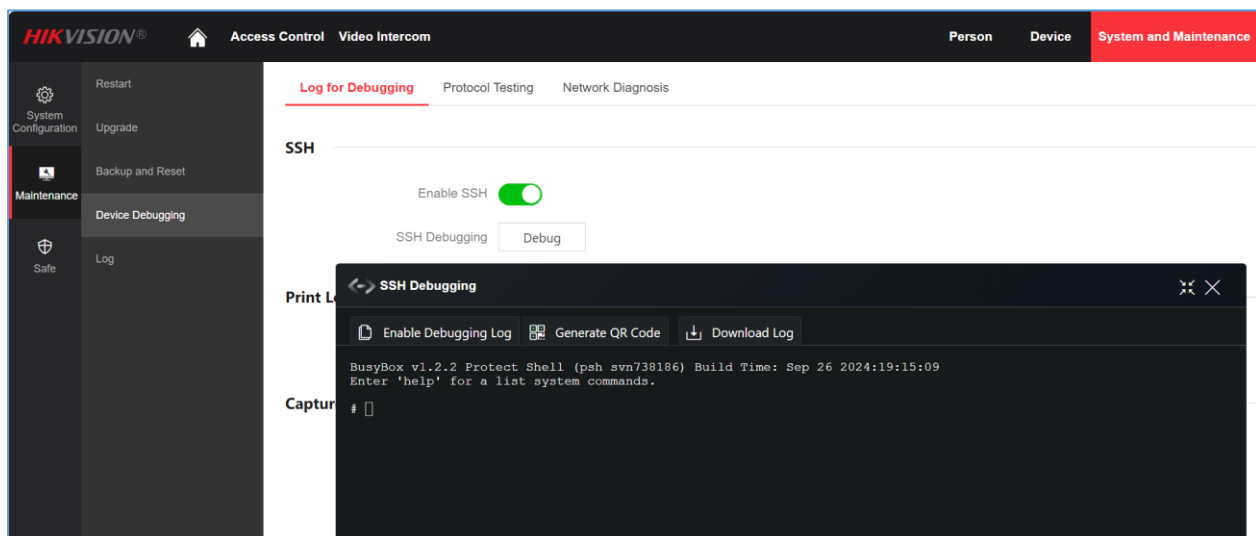
- Support operation log search(max 1,000), including unlock records, call elevator records, tamper alarm, login in/out records, etc.



8. Support web SSH, key logs export, ping tools, capture network packet on the webpage for easier technical diagnose

*Note: web SSH function is only available in HTTPS protocol, please login device webpage with https. For example <https://device ip address/>*





- Support protocol testing, security audit log uploading, https certificate import for easier integration and higher security.

HIKVISION®

Access Control Video Intercom

Person Device **System and Maintenance**

System Configuration

Maintenance

Safe

Restart

Upgrade

Backup and Reset

Device Debugging

Log

Log for Debugging **Protocol Testing** Network Diagnosis

\* Enter Protocol Address

GET

Enter ./ISAPI/...

Execute

Testing Result

Response Header

Return Value

HIKVISION®

Access Control Video Intercom

Person Device **System and Maintenance**

System Configuration

Maintenance

Safe

Restart

Upgrade

Backup and Reset

Device Debugging

Log

Log for Debugging **Protocol Testing** Network Diagnosis

SSH

Enable SSH ☐

Print Log

Print Log Export

Capture Network Packet

Capture Packet Duration 30 s

Capture Network Packet Start Capture

HIKVISION®

Access Control Video Intercom

Person Device **System and Maintenance**

System Configuration

Maintenance

Safe

Restart

Upgrade

Backup and Reset

Device Debugging

Log

Log **Security Audit Log**

Log Upload Server ☒

Encrypt Transmission ☒

Verify Certificate ☒

Server Configuration

\* Log Server Address 0.0.0.0 Incorrect IP address.

\* Log Server Port 0 Range: 1 to 65535

\* Uploading Cycle 1 Hour(s)

Save

**HIKVISION** Access Control Video Intercom Person Device **System and Maintenance**

**Certificate Management**

**HTTPS Certificate**

Current Certificate: None [Create Certificate Request](#)

Import Key:

Import Communication Certificate:

**SYSLOG Certificate**

Current Certificate: None [Create Certificate Request](#)

Import Key:

Import Communication Certificate:

**Import CA Certificate**

\*CA Certificate ID:

Import CA Certificate:

## KNOWN ISSUE

When adding person & PIN from indoor station (V2.2.100\_250114) local screen and sync to door station, please make sure the PIN mode in door station webpage is **Platform-Applied Personal PIN**, or the PIN will not work on door station side.

And we will optimize from indoor station firmware in future version, after that, we don't need to change mode from door station.

**HIKVISION** Access Control Video Intercom

← Click to go back to Person Management.

**Privacy Settings**

**Event Storage Settings**

Event Storage Type: ☐ Delete Old Events Periodically ☐ Delete Old Events by Specified Time ☒ Overwrite

**Picture Uploading and Storage**

Upload Picture When Auth. ☐ If enabled, the captured picture when authentication will be uploaded to the platform automatically.

**PIN Mode**

PIN Mode: ☒ Platform-Applied Personal PIN ☐ Device-Set Personal PIN

## KD8 (-B) Modular Door Station(Main Module)

### Release Note (2024-11-01)

|                                           |                    |                                                                                               |                                                                                           |
|-------------------------------------------|--------------------|-----------------------------------------------------------------------------------------------|-------------------------------------------------------------------------------------------|
| <b>Firmware<br/>Basic<br/>Information</b> | Firmware Version   | V2.2.78_build241012                                                                           |                                                                                           |
|                                           | Device Type        | DS-KD8003-IME1(B),<br>DS-KD8003-IME1(B)/Flush,<br>DS-KD8003-IME1(B)/NS,<br>DS-KD8003Y-IME2/S, | DS-KD8003-IME1(B)/Surface<br>DS-KD8003-IME1(B)/S<br>DS-KD8003Y-IME2<br>DS-KD8003Y-IME2/NS |
|                                           | Device Type (Kits) | DS-KIS602(B)<br>DS-KIS702Y                                                                    |                                                                                           |

#### Modified Features

1. Support 8 KHz & 16 KHz audio sampling rate, add EQ algorithm to improve the audio quality and support more audio format: G.711u, G.711a, Opus, AAC-LD, AAC-LC, G.726, G.722.1

## KD8 (-B) Modular Door Station(Main Module)

### V2.2.76\_build240613 Release Note (2024-06-24)

|                                           |                    |                                                                                               |                                                                                           |
|-------------------------------------------|--------------------|-----------------------------------------------------------------------------------------------|-------------------------------------------------------------------------------------------|
| <b>Firmware<br/>Basic<br/>Information</b> | Firmware Version   | V2.2.76_build240613                                                                           |                                                                                           |
|                                           | Device Type        | DS-KD8003-IME1(B),<br>DS-KD8003-IME1(B)/Flush,<br>DS-KD8003-IME1(B)/NS,<br>DS-KD8003Y-IME2/S, | DS-KD8003-IME1(B)/Surface<br>DS-KD8003-IME1(B)/S<br>DS-KD8003Y-IME2<br>DS-KD8003Y-IME2/NS |
|                                           | Device Type (Kits) | DS-KIS602(B)<br>DS-KIS702Y                                                                    |                                                                                           |

#### Reason of Upgrade

Fixed bugs, enhance products quality and meet customers' requirements.

#### Modified Features

1. Optimize the communication logic and parameter synchronization between door station and indoor station, sub door station, main station.

## **KD8 (-B) Modular Door Station(Main Module)**

### **V2.2.76\_build240515 Release Note (2024-05-22)**

|                                           |                    |                                                                                               |                                                                                           |
|-------------------------------------------|--------------------|-----------------------------------------------------------------------------------------------|-------------------------------------------------------------------------------------------|
| <b>Firmware<br/>Basic<br/>Information</b> | Firmware Version   | V2.2.76_build240515                                                                           |                                                                                           |
|                                           | Device Type        | DS-KD8003-IME1(B),<br>DS-KD8003-IME1(B)/Flush,<br>DS-KD8003-IME1(B)/NS,<br>DS-KD8003Y-IME2/S, | DS-KD8003-IME1(B)/Surface<br>DS-KD8003-IME1(B)/S<br>DS-KD8003Y-IME2<br>DS-KD8003Y-IME2/NS |
|                                           | Device Type (Kits) | DS-KIS602(B)<br>DS-KIS702Y                                                                    |                                                                                           |

#### **Reason of Upgrade**

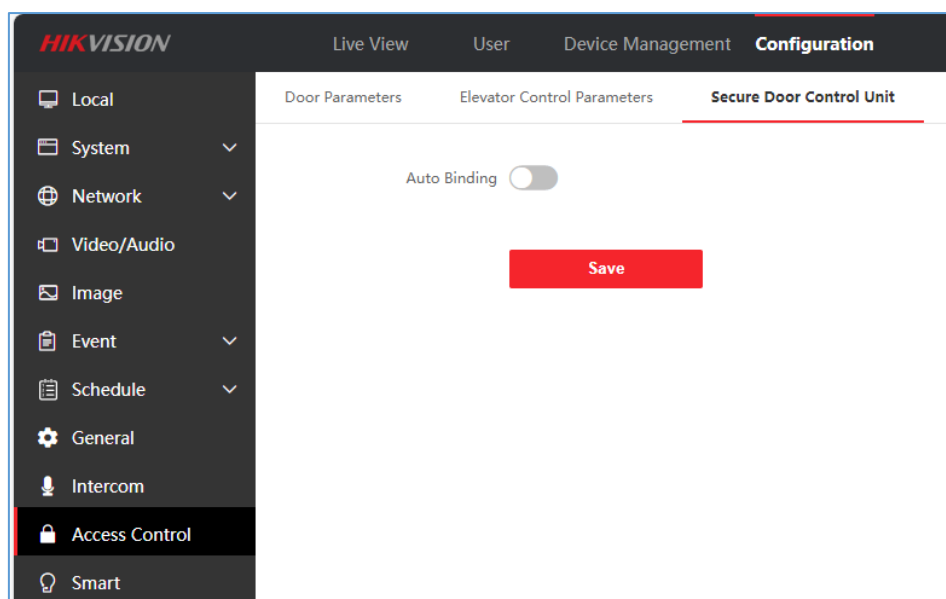
Add new features, enhance products quality and meet customers' requirements.

#### **New Features**

1. 1 to 1 pairing and binding with security modules DS-K2M061 is supported, by default it's disabled.

#### **Note:**

Only DS-K2M061 V1.0.2\_build240506 or later support.



## KD8 (-B) Modular Door Station(Main Module) V2.2.76\_build240226 Release Note (2024-03-12)

|                                           |                    |                                                                                               |                                                                                           |
|-------------------------------------------|--------------------|-----------------------------------------------------------------------------------------------|-------------------------------------------------------------------------------------------|
| <b>Firmware<br/>Basic<br/>Information</b> | Firmware Version   | V2.2.76_build240226                                                                           |                                                                                           |
|                                           | Device Type        | DS-KD8003-IME1(B),<br>DS-KD8003-IME1(B)/Flush,<br>DS-KD8003-IME1(B)/NS,<br>DS-KD8003Y-IME2/S, | DS-KD8003-IME1(B)/Surface<br>DS-KD8003-IME1(B)/S<br>DS-KD8003Y-IME2<br>DS-KD8003Y-IME2/NS |
|                                           | Device Type (Kits) | DS-KIS602(B)<br>DS-KIS702Y                                                                    |                                                                                           |

### Reason of Upgrade

Fix bugs, enhance products quality and meet customers' requirements.

### Modified Feature

1. Fixed the issue that there is a very small probability that there is no sound (including voice, audio prompt, tamper alarm) from the out door station.

## KD8 (-B) Modular Door Station(Main Module)



## V2.2.76\_build240204 Release Note (2024-02-10)

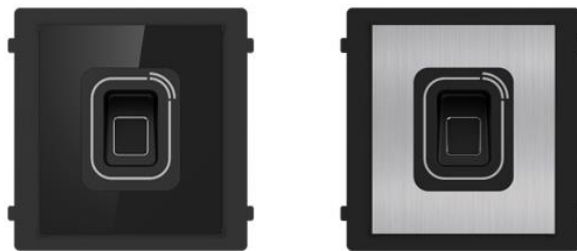
|                                   |                    |                                                                                               |                                                                                           |
|-----------------------------------|--------------------|-----------------------------------------------------------------------------------------------|-------------------------------------------------------------------------------------------|
| <b>Firmware Basic Information</b> | Firmware Version   | V2.2.76_build240204                                                                           |                                                                                           |
|                                   | Device Type        | DS-KD8003-IME1(B),<br>DS-KD8003-IME1(B)/Flush,<br>DS-KD8003-IME1(B)/NS,<br>DS-KD8003Y-IME2/S, | DS-KD8003-IME1(B)/Surface<br>DS-KD8003-IME1(B)/S<br>DS-KD8003Y-IME2<br>DS-KD8003Y-IME2/NS |
|                                   | Device Type (Kits) | DS-KIS602(B)<br>DS-KIS702Y                                                                    |                                                                                           |

### Reason of Upgrade

Add new feature, fix bugs, enhance products quality and meet customers' requirements.

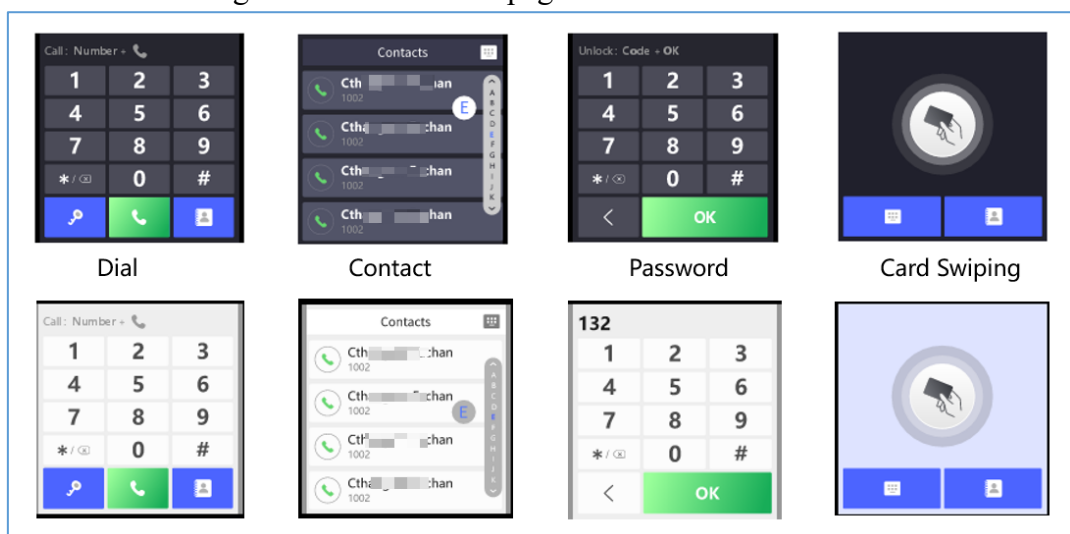
### New Features

- Compatible with new fingerprint & card module DS-KD-MFB (with acrylic front panel) and DS-KD-MFB/S (with stainless front panel), support M1 and Desfire card.



***Note:** Only support collecting and issuing fingerprints from the main module's web remote configuration, not support the use of iVMS-4200 to collect the fingerprints.*

- Compatible with new touch display module firmware V1.0.2\_build240223, and we can configure theme from remote configuration-sub module page.



# KD8 (-B) Modular Door Station(Main Module)

## V2.2.75\_build231213 Release Note (2023-12-15)

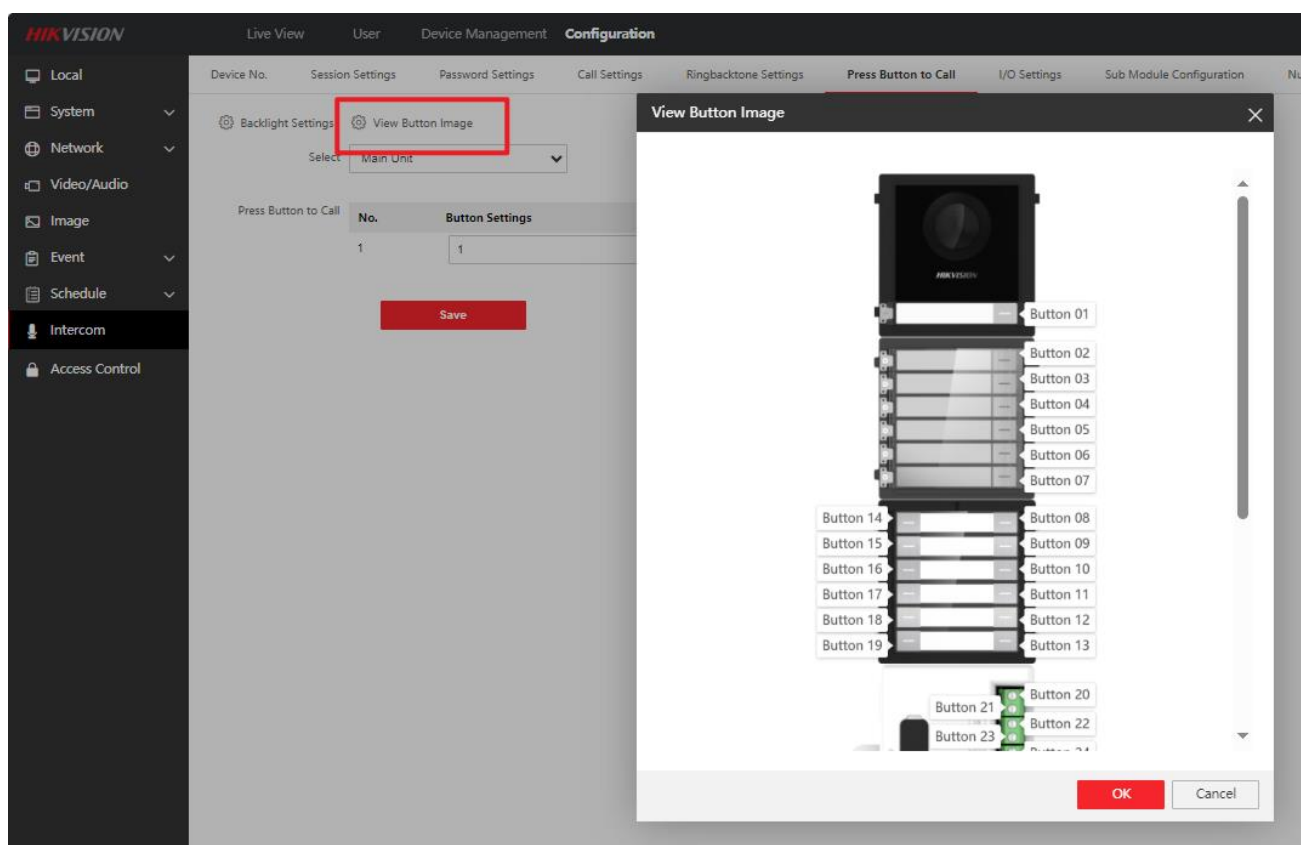
|                                   |                    |                                                                                               |                                                                                           |
|-----------------------------------|--------------------|-----------------------------------------------------------------------------------------------|-------------------------------------------------------------------------------------------|
| <b>Firmware Basic Information</b> | Firmware Version   | V2.2.75_build231213                                                                           |                                                                                           |
|                                   | Device Type        | DS-KD8003-IME1(B),<br>DS-KD8003-IME1(B)/Flush,<br>DS-KD8003-IME1(B)/NS,<br>DS-KD8003Y-IME2/S, | DS-KD8003-IME1(B)/Surface<br>DS-KD8003-IME1(B)/S<br>DS-KD8003Y-IME2<br>DS-KD8003Y-IME2/NS |
|                                   | Device Type (Kits) | DS-KIS602(B)<br>DS-KIS702Y                                                                    |                                                                                           |

### Reason of Upgrade

Add new feature, fix bugs, enhance products quality and meet customers' requirements.

### New Features

- Compatible with new released 12 key nametag module DS-KD-K12 and DS-KD-K12/S
- Update the default button No (room number) image.



# KD8 (-B) Modular Door Station(Main Module)

## V2.2.63 \_build230717 Release Note (2023-07-25)

|                                   |                    |                                                                                               |                                                                                           |
|-----------------------------------|--------------------|-----------------------------------------------------------------------------------------------|-------------------------------------------------------------------------------------------|
| <b>Firmware Basic Information</b> | Firmware Version   | V2.2.63 _build230717                                                                          |                                                                                           |
|                                   | Device Type        | DS-KD8003-IME1(B),<br>DS-KD8003-IME1(B)/Flush,<br>DS-KD8003-IME1(B)/NS,<br>DS-KD8003Y-IME2/S, | DS-KD8003-IME1(B)/Surface<br>DS-KD8003-IME1(B)/S<br>DS-KD8003Y-IME2<br>DS-KD8003Y-IME2/NS |
|                                   | Device Type (Kits) | DS-KIS602(B)<br>DS-KIS702Y                                                                    |                                                                                           |

### Reason of Upgrade

Add new feature, fix bugs, enhance products quality and meet customers' requirements.

### New Features

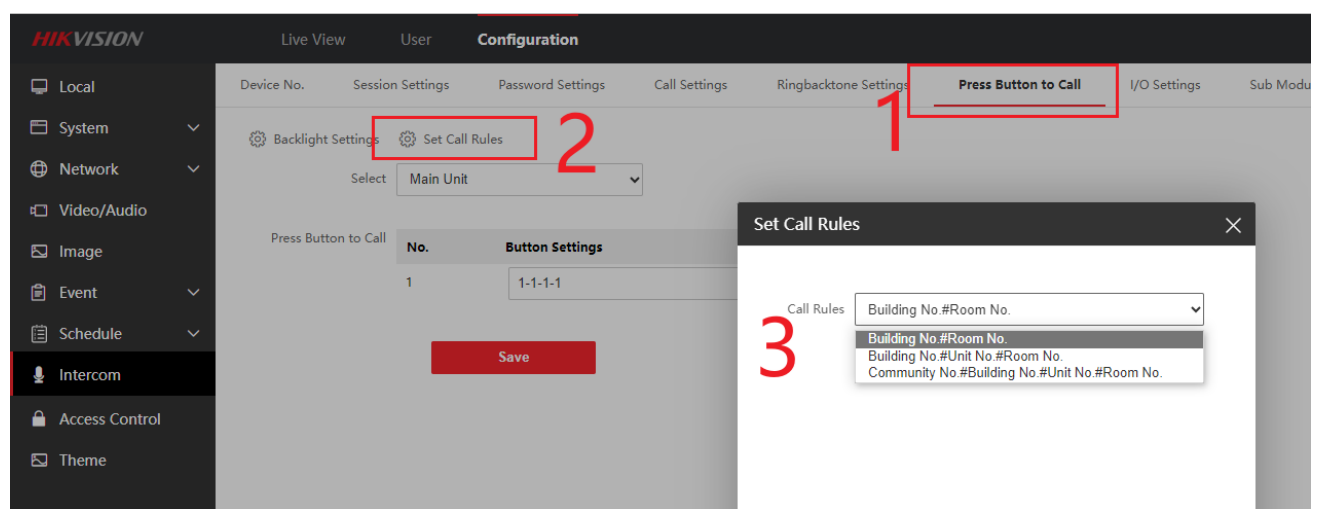
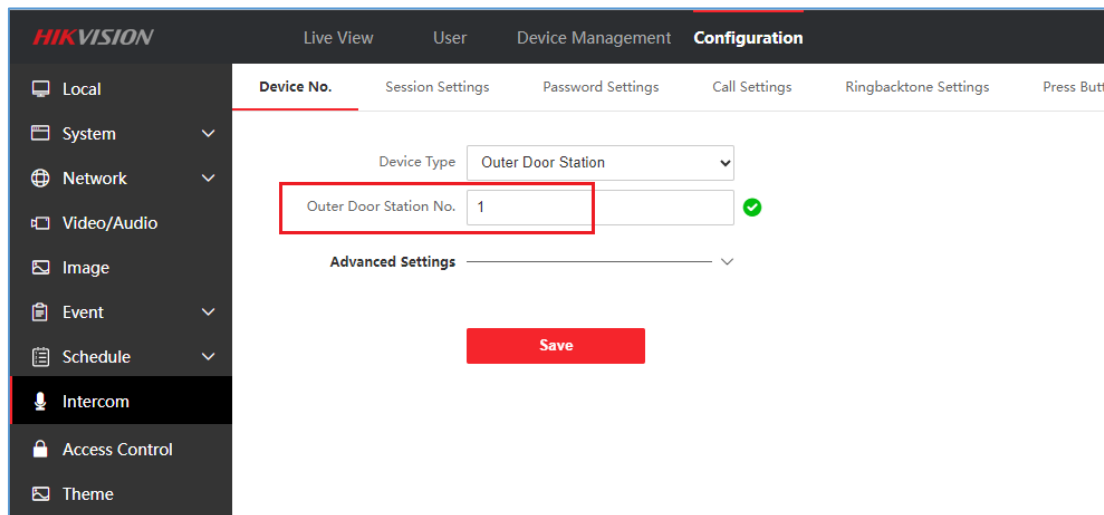
1. Add 13 new languages, now in total support 35 languages. Only two voices "door is open" and "please leave a message" are retained, and the rest of the prompt tones are replaced by Didi, busy tones, etc.

*Note: DS-KD-TD touch display module should use firmware V1.0.1 \_build230717.*

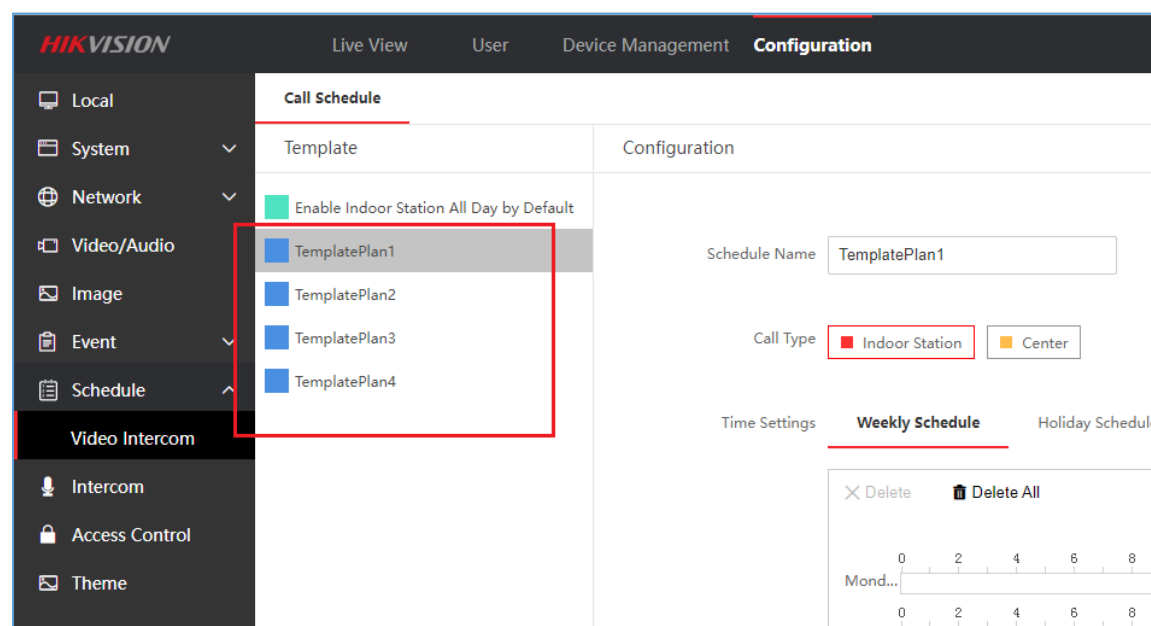
| English           | Português(Brasil) |
|-------------------|-------------------|
| Français          | Eesti             |
| Português         | Suomi             |
| Español           | עברית             |
| Русский           | Latviešu          |
| Deutsch           | Lietuvių          |
| Italiano          | Монгол            |
| Polski            | Norsk             |
| العربية           | Slovenščina       |
| Türkçe            | Svenska           |
| Tiếng Việt        | Dansk             |
| Magyar            | 繁體中文              |
| Nederlands        | O'zbekcha         |
| Română            | Қазақша           |
| Čeština           |                   |
| Български         |                   |
| Українська        |                   |
| Hrvatski          |                   |
| Srpski            |                   |
| Ελληνικά          |                   |
| Slovenčina        |                   |
| Português(Brasil) |                   |

2. Add calling mode for outer door station. It supports 3 modes to call indoor station, and there's no need to input full 4 digits room number. For example 1#1 is calling 1-1-1-1 by default.

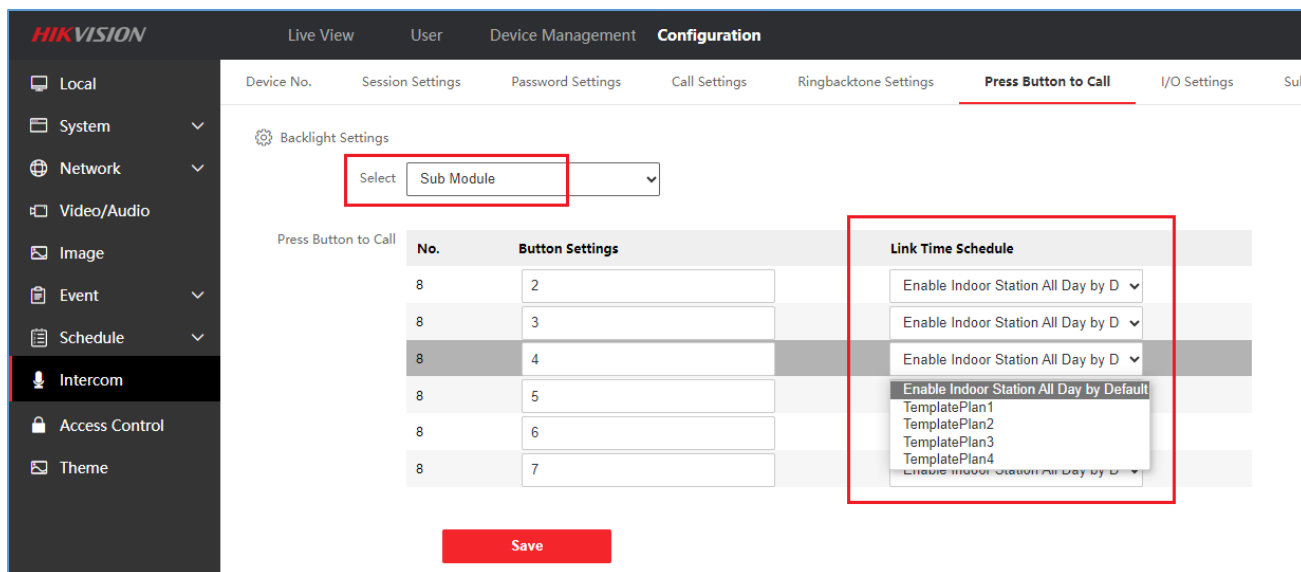
- 1) Building No.# Room No.
- 2) Building No.# Unit No.# Room No.
- 3) Community No.# Building No.# Unit No.



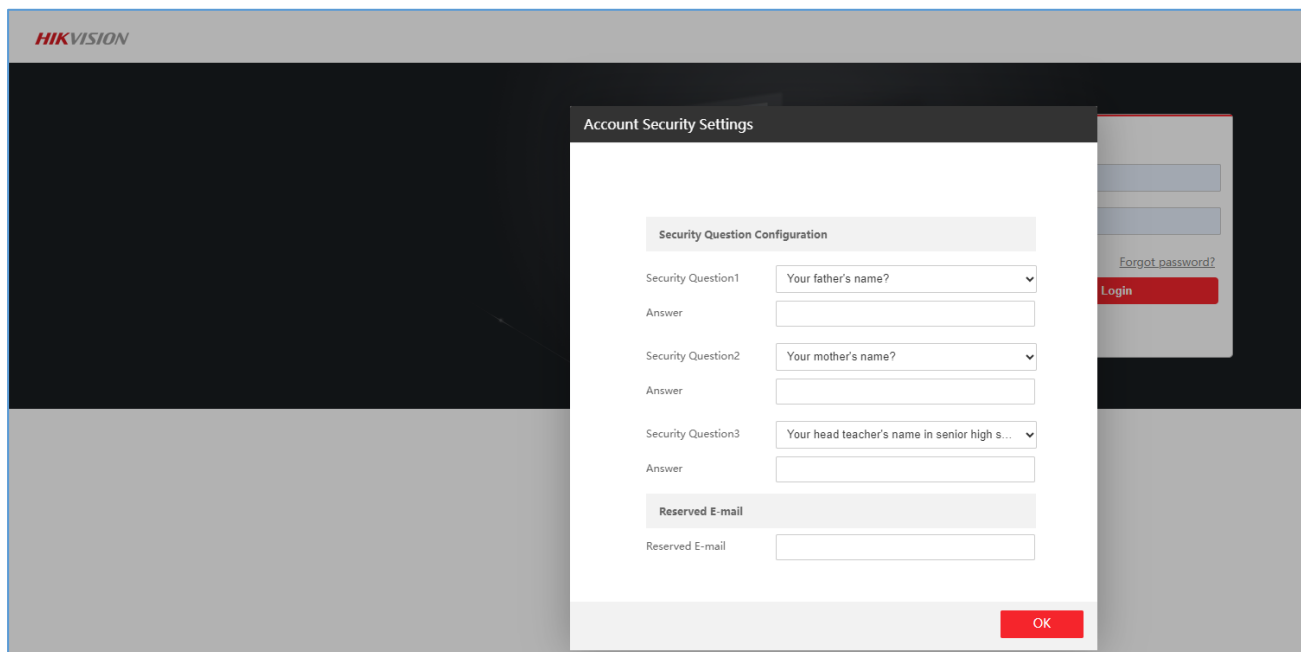
3. Increase the call template quantity to 4 (it was 1 in previous version)



4. The DS-KD-KK nametag module and DS-KD-AL8 alarm in module support call time schedule settings. (only main module button supports this function in previous version)

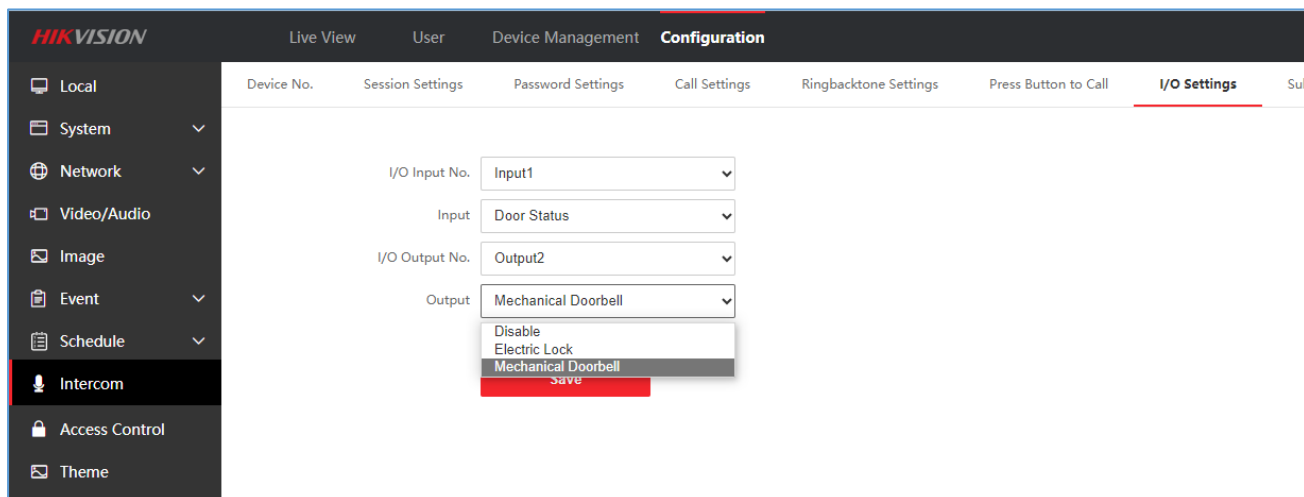


5. Add *Account Security Settings* function, you can reset the device password with security question or your email address if you forget the activation password.



## Modified Feature

1. Lock 2 can be configured to mechanical doorbell mode, when calling the indoor station, the output will be triggered.



- When the motion detection is enabled and triggered, the DS-KD-TD touch display module will enter the calling page/contact list directly, there's no need to touch the screen to exit the screen saver.

*Note: DS-KD-TD touch display module should use firmware V1.0.1\_build230717.*

## KD8 (-B) Modular Door Station(Main Module) V2.2.63\_build230204 Release Note(2023-02-10)

|                                   |                    |                                                                                               |                                                                                           |
|-----------------------------------|--------------------|-----------------------------------------------------------------------------------------------|-------------------------------------------------------------------------------------------|
| <b>Firmware Basic Information</b> | Firmware Version   | V2.2.63_build230204                                                                           |                                                                                           |
|                                   | Device Type        | DS-KD8003-IME1(B),<br>DS-KD8003-IME1(B)/Flush,<br>DS-KD8003-IME1(B)/NS,<br>DS-KD8003Y-IME2/S, | DS-KD8003-IME1(B)/Surface<br>DS-KD8003-IME1(B)/S<br>DS-KD8003Y-IME2<br>DS-KD8003Y-IME2/NS |
|                                   | Device Type (Kits) | DS-KIS602(B)<br>DS-KIS702Y                                                                    |                                                                                           |

### Reason of Upgrade

Fix bugs, enhance products quality and meet customers' requirements.

## New Features

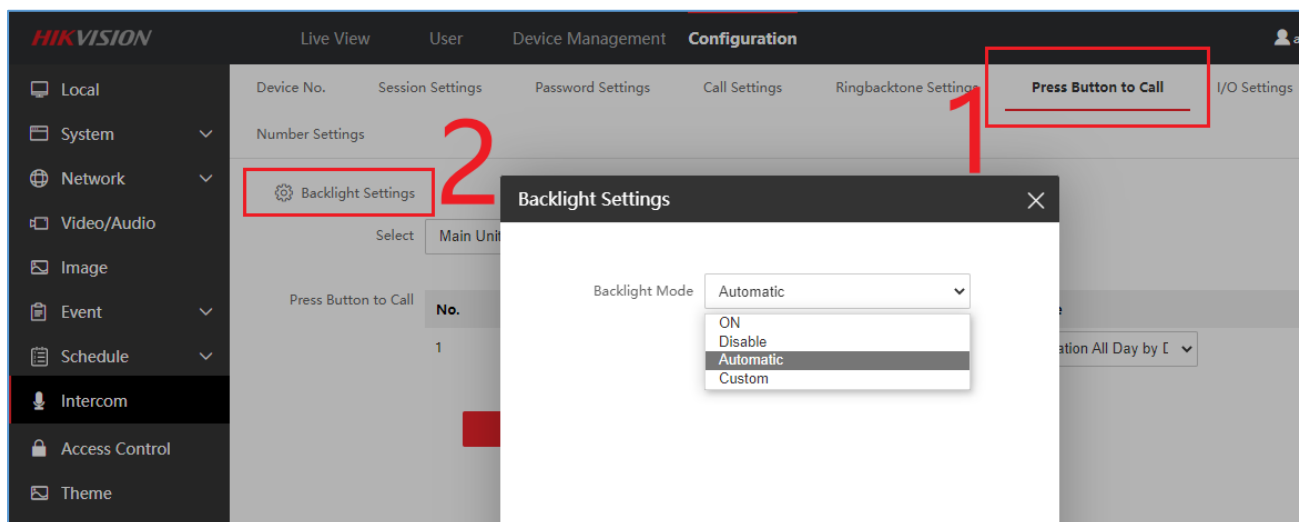
1. Add sub module **backlight** control: 4 modes (close, open, auto and custom), support DS-KD-KK, DS-KD-KP, DS-KD-INFO modules

**Close:** always OFF

**Open:** always ON

**Auto:** ON and OFF according to the ambient light brightness

**Custom:** ON and OFF according to configured time schedule



2. Compatible with new button extending sub module DS-KD-AL8, the module is configured and upgrade firmware from main module KD8003 remote configuration, you can link the alarm input No. to indoor station room No., once the input is triggered (short connected), the linked indoor station will be called.

### **Note:**

- Maximum support 20 button extending modules cascading
- Each DS-KD-AL8 support 8 alarm input signal, so totally maximum 160 alarm inputs can be connected to one KD8003.
- Each module should have a unique DIP switch address.
- Make sure all modules are connected and each use unique DIP settings before power on the main module KD8003

**Hikvision**
Live View   User   Device Management   **Configuration**

Local
System
Network
Video/Audio
Image
Event
Schedule
**Intercom**
Access Control

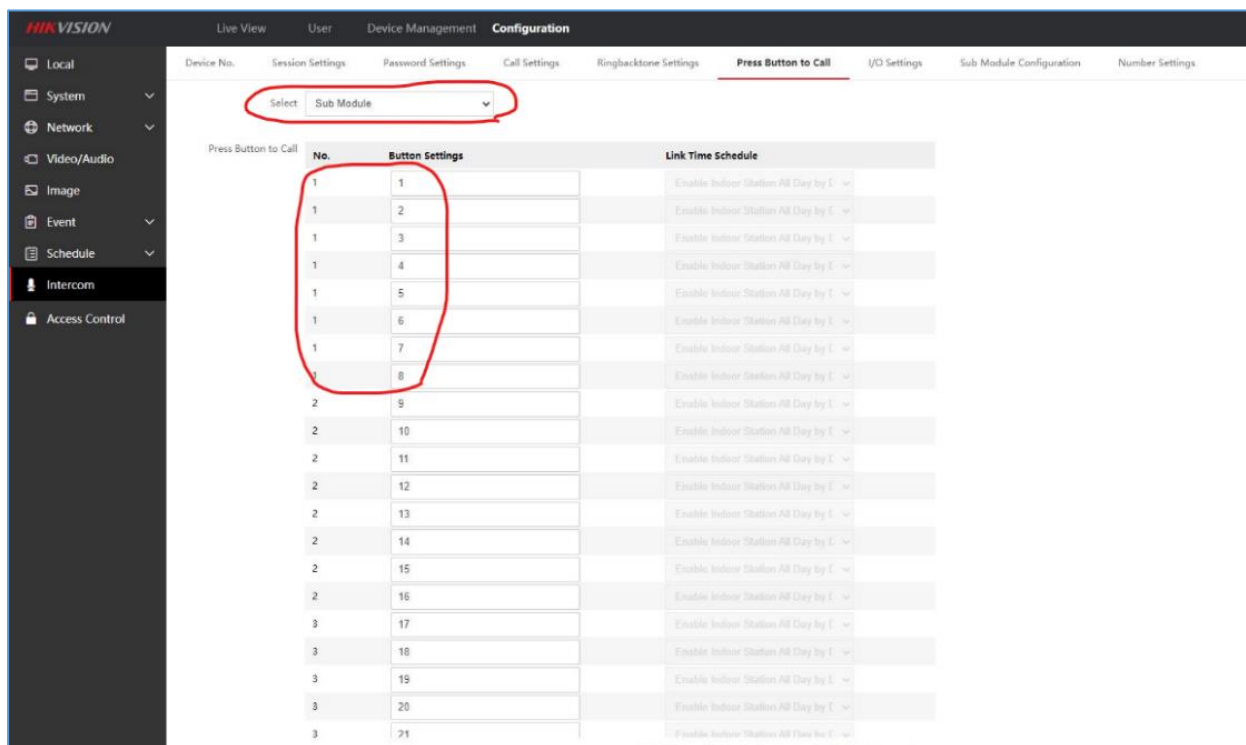
Device No.
Session Settings
Password Settings
Call Settings
Ringbacktone Settings
Press Button to Call
I/O Settings
**Sub Module Configuration**
Number Settings

Backlight Settings

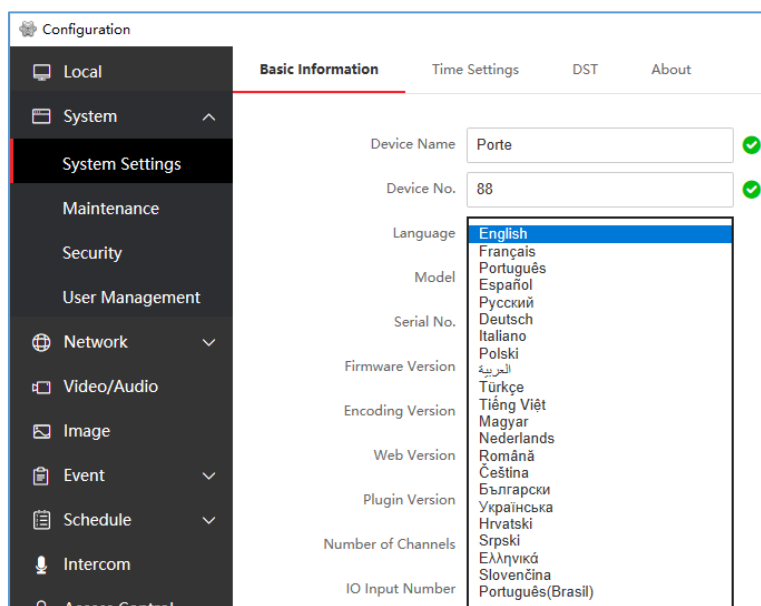
| No. | Module type    | Status | Version            | Operation |
|-----|----------------|--------|--------------------|-----------|
| 1   | Nametag Module | Online | V2.0.0 build221121 |           |
| 2   | Nametag Module | Online | V2.0.0 build221121 |           |
| 3   | Nametag Module | Online | V2.0.0 build221121 |           |
| 4   | Nametag Module | Online | V2.0.0 build221121 |           |
| 5   | Nametag Module | Online | V2.0.0 build221121 |           |
| 6   | Nametag Module | Online | V2.0.0 build221121 |           |
| 7   | Nametag Module | Online | V2.0.0 build221121 |           |
| 8   | Nametag Module | Online | V2.0.0 build221121 |           |
| 9   | Nametag Module | Online | V2.0.0 build221121 |           |
| 10  | Nametag Module | Online | V2.0.0 build221121 |           |
| 11  | Nametag Module | Online | V2.0.0 build221121 |           |
| 12  | Nametag Module | Online | V2.0.0 build221121 |           |
| 13  | Nametag Module | Online | V2.0.0 build221121 |           |
| 14  | Nametag Module | Online | V2.0.0 build221121 |           |
| 15  | Nametag Module | Online | V2.0.0 build221121 |           |
| 16  | Nametag Module | Online | V2.0.0 build221121 |           |
| 17  | Nametag Module | Online | V2.0.0 build221121 |           |
| 18  | Nametag Module | Online | V2.0.0 build221121 |           |

Total 18





### 3. Support Portuguese language



### 4. Support capture device image through ISAPI protocol.

/ISAPI/Streaming/channels/1/picture?snapShotImageType=JPEG&videoResolutionWidth=1280&videoResolutionHeight=720&imageQuality=better

**snapShotImageType:** picture format, only support JPEG now

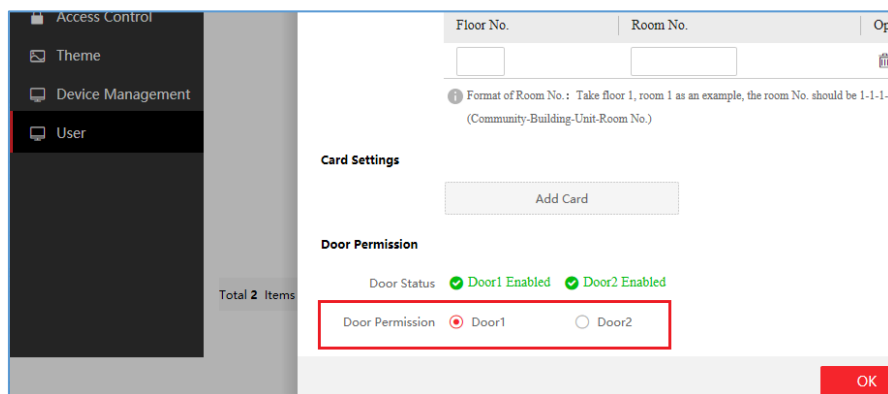
**videoResolutionWidth:** videoResolutionHeight: picture resolution, if not use this parameter, by default it's 704\*576. Supported resolution: 1280\*720, 704\*576, 704\*480, 352\*288, 352\*240, 176\*144, 176\*120

**imageQuality:** support best, better, normal, general

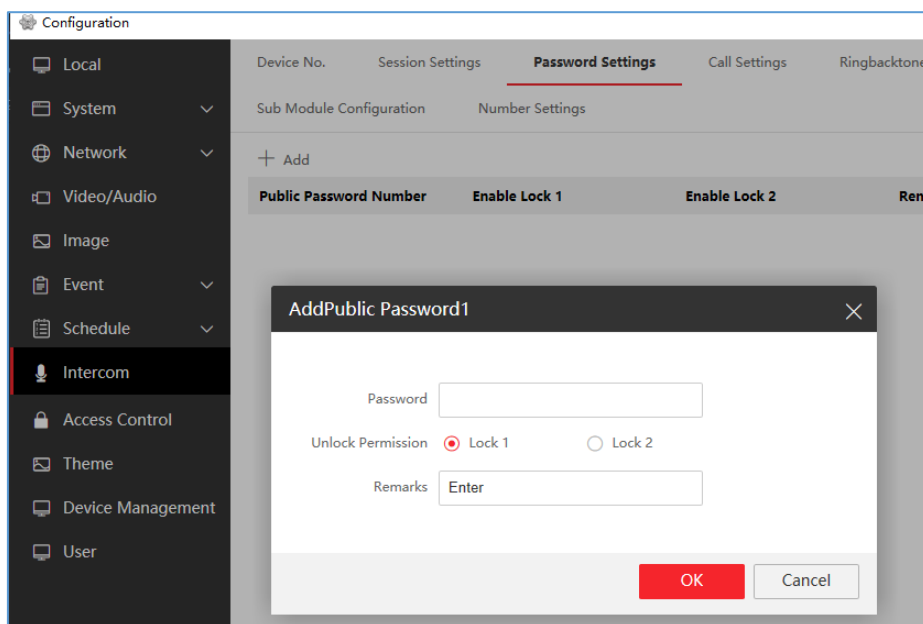
## Modified Features

1. Support swipe card to open lock2: when adding new person, you can link to lock 1 or lock 2, and after swipe card, the related lock will be open.

**Note:** before the lock was linked to card module DIP switch, now we cancelled this logic so that we can open different lock with same card module.



2. Support open door1 and door2 with different public password on same keypad DS-KD-KP or DS-KD-TD module.



3. When open door2 with card or public password, but door2 is not enabled from main module KD8003, the device will prompt “Bi-Bi” sound and will not upload any event to iVMS or HikCentral (device will upload “invalid card” event in previous version firmware)
4. Support not showing the person in DS-KD-DIS and KD-TDM module.  
When adding person, if you don't input the room No., this person will not be displayed in KD-DIS or KD-TD/TDE/TDM module

Configuration

Local

System

Network

Video/Audio

Image

+ Add

Delete

Input Keywords

| <input type="checkbox"/> | Employee ID | User Type | Name    | Floor No. | Room No. | Card Number. | Start Time         | End Time           | Operation |
|--------------------------|-------------|-----------|---------|-----------|----------|--------------|--------------------|--------------------|-----------|
| <input type="checkbox"/> | 123454      | User      | uhih    |           |          | 0            | 2022-11-03T00:0... | 2022-11-02T23:5... |           |
| <input type="checkbox"/> | asdfasdf    | User      | 2134213 | 1         | 1-1-1-1  | 0            | 2022-11-03T00:0... | 2022-11-02T23:5... |           |

|  |                    |                                         |
|--|--------------------|-----------------------------------------|
|  |                    | DS-KD8003Y-IME2/S<br>DS-KD8003Y-IME2/NS |
|  | Device Type (Kits) | DS-KIS602(B)<br>DS-KIS702Y              |

**Fix:**

Fixed a large area of the left FOV being obscured due to lens distortion.

## **KD8 (-B) Modular Door Station (Main Module)**

### **Version: V2.2.58\_build220725 Release Note**

### **(2022-08-02)**

|                                           |                    |                                                                                                                                                            |
|-------------------------------------------|--------------------|------------------------------------------------------------------------------------------------------------------------------------------------------------|
| <b>Firmware<br/>Basic<br/>Information</b> | Firmware Version   | V2.2.58_220725                                                                                                                                             |
|                                           | Device Type        | (2022-08-02):<br>DS-KD8003-IME1(B)<br>DS-KD8003-IME1(B)/Surface<br>DS-KD8003-IME1(B)/Flush<br>(2022-08-23):<br>DS-KD8003-IME1(B)/S<br>DS-KD8003-IME1(B)N/S |
|                                           | Device Type (Kits) | (2022-08-02):<br>DS-KIS602(B)                                                                                                                              |

**Notes:**

This is a newly released hardware version, and the software which is inherited all the functions of the previous version of DS-KD8003 series.

### **1.1 Recommended Firmware**

It is recommended to use the following devices and version together, because they can cooperate and work normally after the docking test.

| Test resource | Device type | Version        |
|---------------|-------------|----------------|
| New version   | KD8003-IME1 | V2.2.56_220424 |
|               | DS-KD-TDM   | V1.0.1_220424  |
| Door Station  | KD9403      | V2.2.37_211125 |

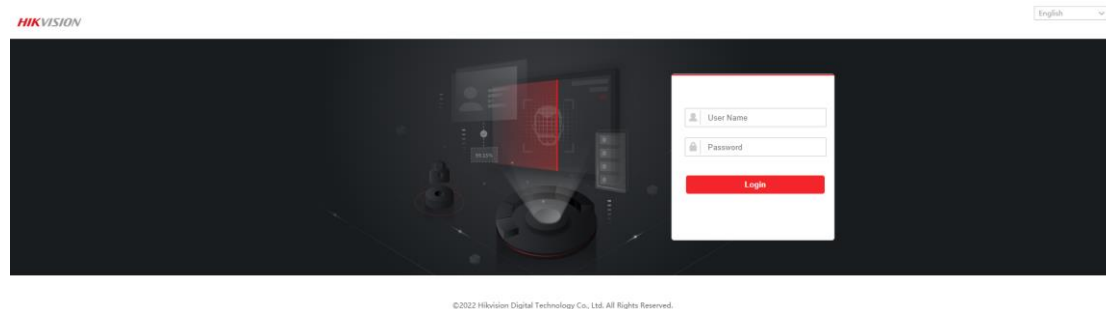
|                |                    |                          |
|----------------|--------------------|--------------------------|
|                | KV6113, KV8X13     | V2.2.52_211104           |
|                | DS-KD-DIS          | V1.0.4_build211111       |
|                | DS-KD-KK, DS-KD-KP | V1.1.1_build210318       |
|                | DS-KD-M            | V2.0.0_build210223       |
| Indoor Station | DS-KH6320-LE1      | V1.4.60_build211209      |
|                | KH6320-WTE1        | V2.1.34_build211118      |
|                | KH9310             | V2.1.28_build210803      |
| Main Station   | KM9503             | V1.0.34_build220212      |
| IVMS-4200      | IVMS-4200 Client   | V3.5.0.101 build20220418 |

## Notes:

Test records only contain the cases for normal devices and do not represent all the scenarios and all the functions.

## 2. New

### 2.1 Support the Web Client to login:



### 2.2 Support European Portuguese and Slovak, and support language switching without restart.

**Customer Impact and Recommended Action**

This update refers to function/compatibility improvement and will take effect automatically after the Date of Change. We are very sorry for any inconvenience of use-habit changes caused by this action.

For any questions and request for this firmware, please contact our local technical support team.

**Note:**

- Hikvision reserves the right to change, alter or withdraw the above notification without prior notice.
- Product design and specifications are subject to change without prior notice.
- The Hikvision firmware may contain errors known as errata, which may cause the product to deviate from published specifications. Current characterized errata are available on request.
- Hikvision is not liable for any typing or printing errors.

Hikvision Digital Technology CO., Ltd.  
No. 555 Qianmo Road, Binjiang District, Hangzhou 310051,  
China  
Tel: +86-571-8807-5998  
FAX: +86-571-8993-5635  
Email: [overseabusiness@hikvision.com](mailto:overseabusiness@hikvision.com)