

DS-K1A340 Series MinMoe Terminal

Release Notes (2024-01-02)

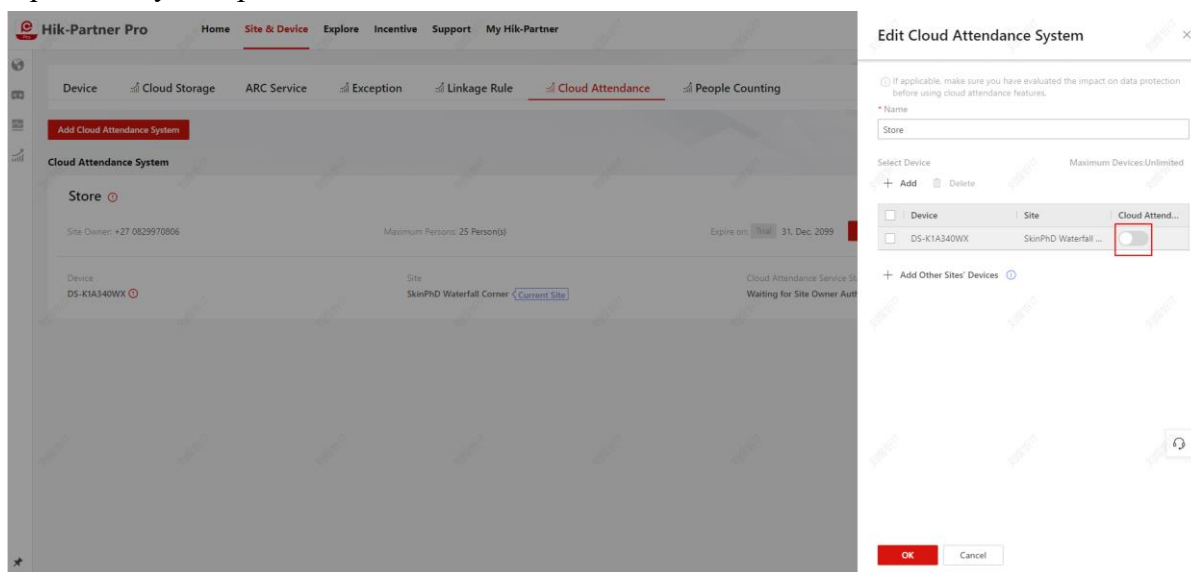
Device Model: DS-K1A340X, DS-K1A340WX DS-K1A340FX, DS-K1A340FWX Naming Rule: F for fingerprint, W for Wi-Fi	Firmware Version	ARM: AIS_FRACS_340_F1pro_EN_STD_V1.2.7_build240102 AIS_FRACS_340_F1pro_EN_NEU_V1.2.7_build240102
	SDK	Latest baseline version
	iVMS-4200 Version	Latest baseline version

Reason of Upgrade

Fix bugs.

Modified features

When the device is added to HPP and the platform enables cloud attendance function, there is a probability of repeated restarts.



DS-K1A340 Series MinMoe Terminal

Release Notes (2023-06-15)

Device Model: DS-K1A340X, DS-K1A340WX DS-K1A340FX, DS-K1A340FWX Naming Rule: F for fingerprint, W for Wi-Fi	Firmware Version	ARM: AIS_FRACS_340_F1pro_EN_STD_V1.2.7_build230609 AIS_FRACS_340_F1pro_EN_NEU_V1.2.7_build230609
	SDK	Latest baseline version
	iVMS-4200 Version	Latest baseline version

Reason of Upgrade

Add new function, fix bugs, enhance products quality and meet customers' requirements.

Modified features

1. Optimize the communication logic with hik-connect server.

DS-K1A340 Series MinMoe Terminal Release Notes (2022-04-09)

Device Model: DS-K1A340X, DS-K1A340WX DS-K1A340FX, DS-K1A340FWX Naming Rule: F for fingerprint, W for Wi-Fi	Firmware Version	ARM: AIS_FRACS_340_F1pro_EN_STD_V1.2.2_build220315 AIS_FRACS_340_F1pro_EN_NEU_V1.2.2_build220315
	SDK	Latest baseline version
	iVMS-4200 Version	Latest baseline version

Reason of Upgrade

Add new function, fix bugs, enhance products quality and meet customers' requirements.

Modified features

2. Optimize fingerprint module performance.

DS-K1A340 Series MinMoe Terminal

Release Notes (2021-10-23)

Device Model: DS-K1A340X, DS-K1A340WX DS-K1A340FX, DS-K1A340FWX Naming Rule: F for fingerprint, W for Wi-Fi	Firmware Version	ARM: AIS_FRACS_340_F1pro_EN_STD_V1.2.1_build211022 AIS_FRACS_340_F1pro_EN_NEU_V1.2.1_build211022
	SDK	Latest baseline version
	iVMS-4200 Version	Latest baseline version

Reason of Upgrade

Add new function, fix bugs, enhance products quality and meet customers' requirements.

Modified features

1. Update the driver to be compatible with new fingerprint materials;

DS-K1A340 Series MinMoe Terminal

Release Notes (2021-10-18)

Device Model: DS-K1A340X, DS-K1A340WX DS-K1A340FX, DS-K1A340FWX Naming Rule: F for fingerprint, W for Wi-Fi	Firmware Version	ARM: AIS_FRACS_340_F1pro_EN_STD_V1.2.0_build210928 AIS_FRACS_340_F1pro_EN_NEU_V1.2.0_build210928
	SDK	Latest baseline version
	iVMS-4200 Version	Latest baseline version

Reason of Upgrade

Add new function, fix bugs, enhance products quality and meet customers' requirements.

New Features**Modified features**

1. Optimize the screen display effect;
2. Optimize security issues;

DS-K1A340 Series MinMoe Terminal Release Notes (2021-09-17)

Device Model: DS-K1A340X, DS-K1A340WX DS-K1A340FX, DS-K1A340FWX Naming Rule: F for fingerprint, W for Wi-Fi	Firmware Version	ARM: AIS_FRACS_340_F1pro_EN_STD_V1.2.0_build210917 AIS_FRACS_340_F1pro_EN_NEU_V1.2.0_build210917
	SDK	Latest baseline version
	iVMS-4200 Version	Latest baseline version

Reason of Upgrade

Add new function, fix bugs, enhance products quality and meet customers' requirements.

New Features

1. Support exporting the attendance card table;
2. Support 4-channel real-time arming on port 80, and support for ISUP5.0 event upload;
3. Adds privacy parameter settings in UI interface;

Modified features

1. UI optimization
2. When importing face information, people can be imported into the designated department number (if the department number is illegal, the default department will be 1);

DS-K1A340 Series MinMoe Terminal

Release Notes (2021-09-01)

Device Model: DS-K1A340X, DS-K1A340WX DS-K1A340FX, DS-K1A340FWX Naming Rule: F for fingerprint, W for Wi-Fi	Firmware Version	ARM: AIS_FRACS_340_F1pro_EN_STD_V1.1.1_build210901 AIS_FRACS_340_F1pro_EN_NEU_V1.1.1_build210901
	SDK	Latest baseline version
	iVMS-4200 Version	Latest baseline version

Reason of Upgrade

New model DS-K1A340 series MinMoe terminal first time released.



New Features

- 4.3 inch capacitive touch screen with large screen ratio, 2 MP wide-angle dual-lens camera with WDR feature;
- Face recognition duration < 0.2 s/User; face recognition accuracy rate ≥ 99%
- Face, fingerprint, event capacity**

	Face	Fingerprint	Event	Wi-Fi
DS-K1A340X	1,500	Not support	300,000	Not support
DS-K1A340WX		Not support		Support
DS-K1A340FX		3,000		Not support
DS-K1A340FWX		3,000		Support

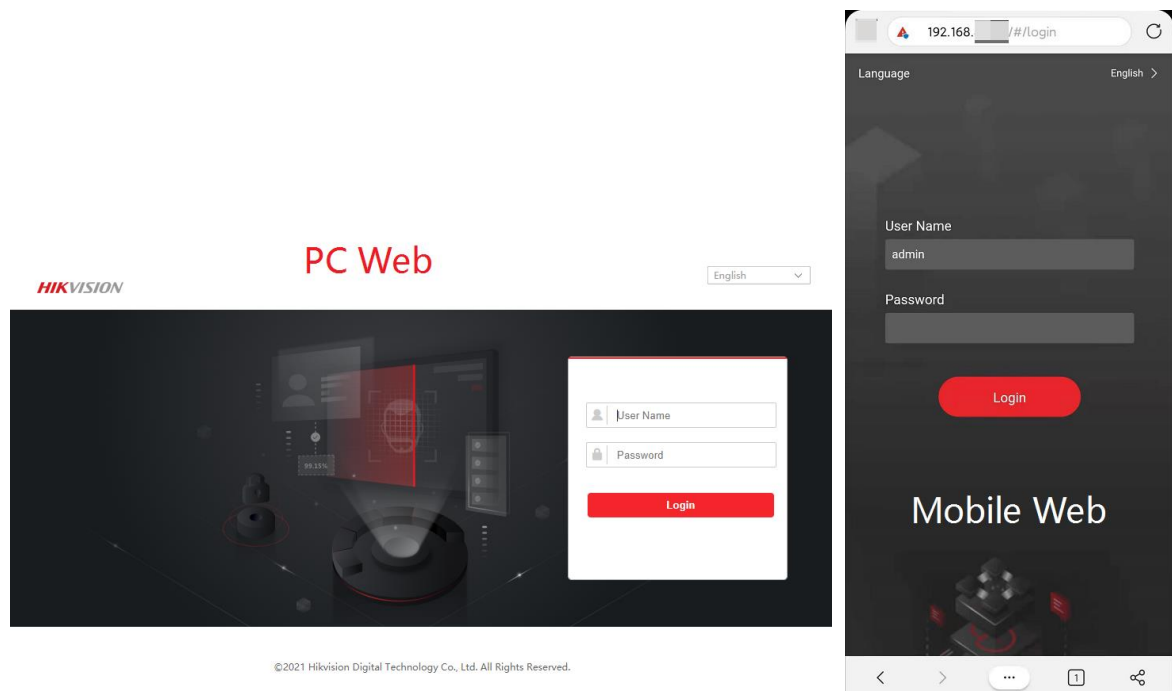
- ISAPI** protocol makes it easier for integration with third-party software;
- Support **Hik-ProConnect** platform to realize Cloud time attendance management
- Support **ISUP 5.0** protocol to manage devices located in different locations;

- When open device for the first time, wizard for activation and basic configuration. Including select language, application mode, select and configure Wi-Fi, privacy settings, add administrator face.

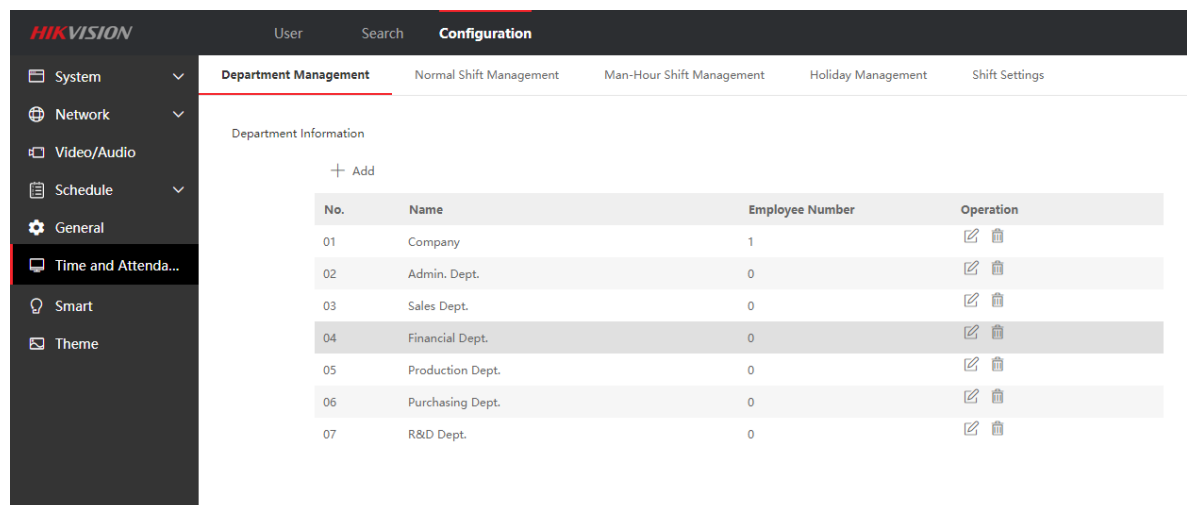
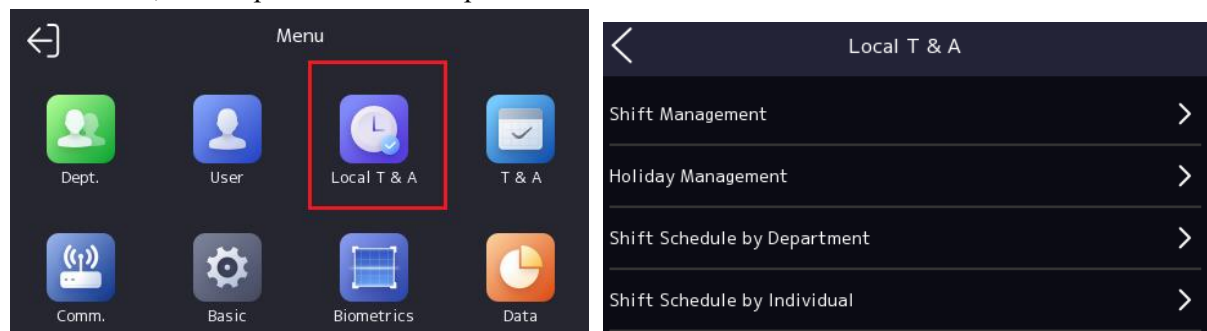
The screenshots show the following steps in the activation wizard:

- Activate Device:** Requires entering a password (8-16 characters) and confirming it. The password must contain at least two of the following: digit, letter, and symbol.
- Select Language:** Offers English (selected), 日本語 (Japanese), and 한국어 (Korean).
- Select Application Mode:** Offers Indoor (selected) and Others.
- Access to Hik-Connect:** Includes a toggle for 'Access to Hik-Connect' (turned on), the URL 'litedev.hik-connect.com', and a field for a 'Verification Code'.
- Privacy:** Includes four toggle options: 'Select All', 'Upload Pic. When Auth.', 'Save Pic. When Auth.', and 'Save Registered Pic.'.

- Login and configure device in web client via **PC/mobile browser**; (mobile phone should connect same network with device)



9. Self-defined voice prompt (TTS function, English only) and screen display info (user ID, name and face picture) for authentication;
10. Local Time&Attendance function. We can configure the shift for employees from device local or PC web, then export attendance report to USB drive.

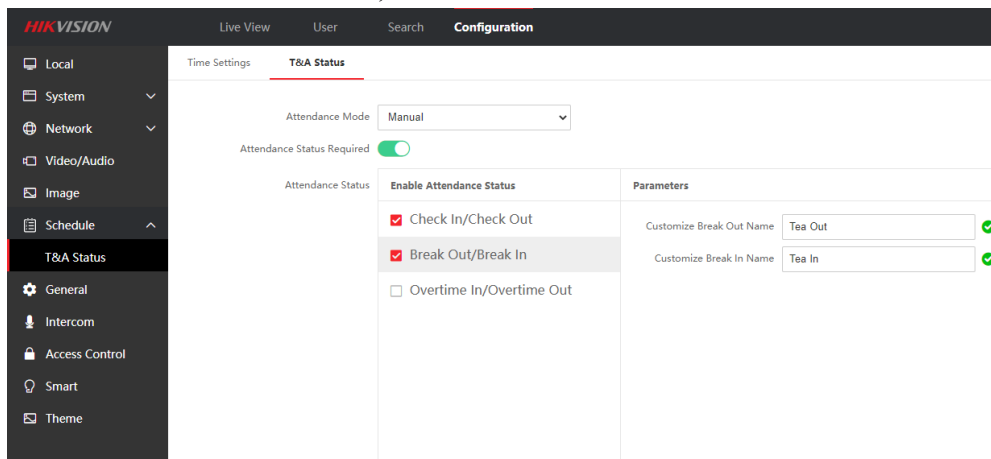


11. Network

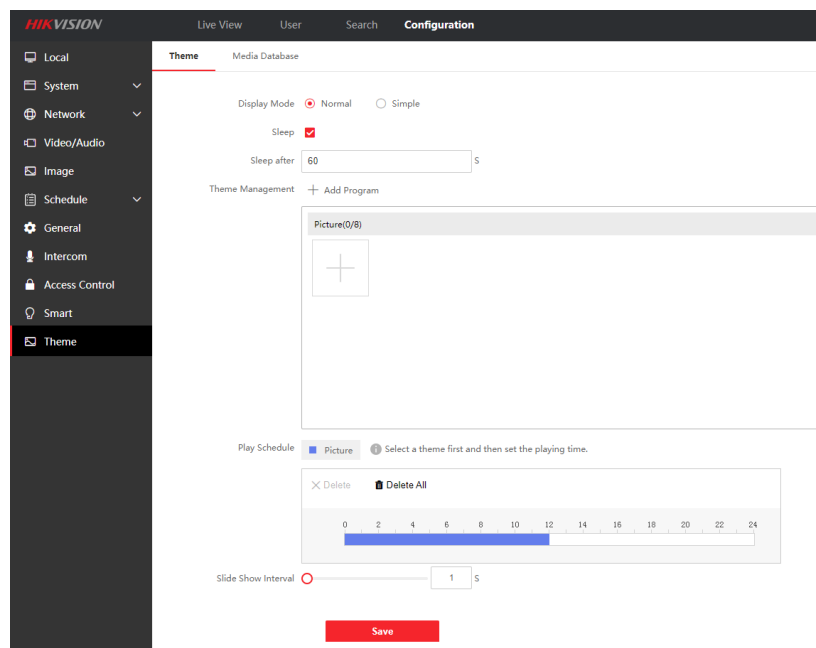
Support Wi-Fi, adapt to LAN(network) or WAN(ISUP 5.0) network environment

12. Function

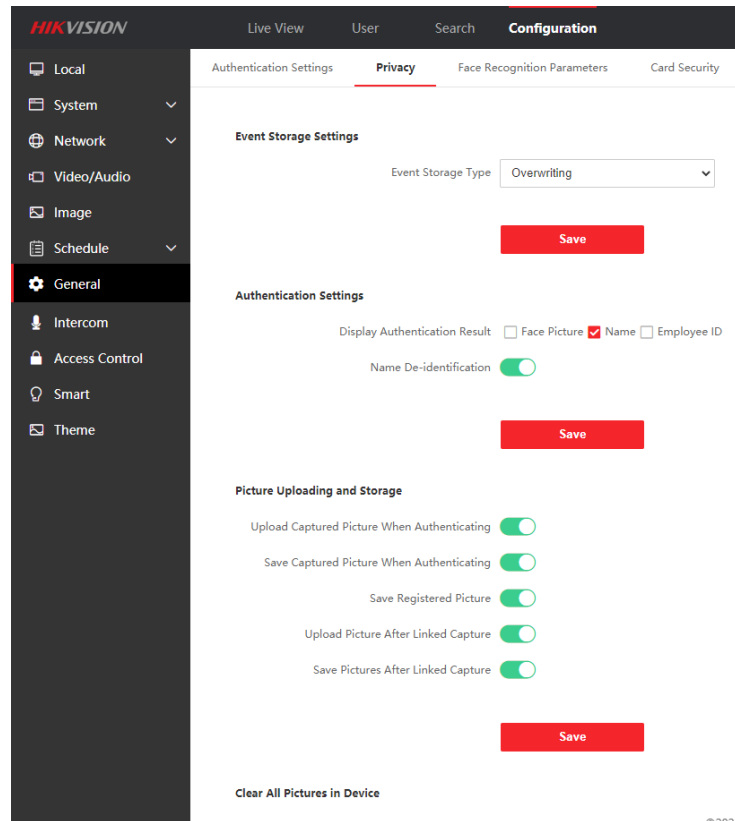
- Multiple verification modes: Face, fingerprint(-F only), PIN code;
- Face recognition distance ranges from 0.3 to 1.5 meters;
- Support check in/check out/break out/break in/overtime in/overtime out attendance status, and self-define status name;



- Support custom standby background image (max 8 pictures, each picture should be smaller than 1MB)



- Support privacy protection, customer can define the privacy related parameter, such as Event Storage Settings, Picture Uploading and Storage, Clear All Pictures in Device



- f. Supports face recognition in low illumination

Customer Impact and Recommended Action

This update refers to function/compatibility improvement and will take effect automatically after the Date of Change. We are very sorry for any inconvenience of use-habit changes caused by this action. For any questions and request for this firmware, please contact our local technical support team.

Note:

- Hikvision reserves the right to change, alter or withdraw the above notification without prior notice.
- Product design and specifications are subject to change without prior notice.
- The Hikvision firmware may contain errors known as errata, which may cause the product to deviate from published specifications. Current characterized errata are available on request.
- Hikvision is not liable for any typing or printing errors.

Hikvision Digital Technology CO., Ltd.
No. 555 Qianmo Road, Binjiang District, Hangzhou 310051,
China
Tel: +86-571-8807-5998
FAX: +86-571-8993-5635
Email: overseabusiness@hikvision.com