



4 MP Radar-Assisted Smart Monitoring Camera (TCM403-E)_V5.0.1_220413

Release Note

Legal Information

© 2022 Hangzhou Hikvision Digital Technology Co., Ltd. All rights reserved.

This Document (hereinafter referred to be "the Document") is the property of Hangzhou Hikvision Digital Technology Co., Ltd. or its affiliates (hereinafter referred to as "Hikvision"), and it cannot be reproduced, changed, translated, or distributed, partially or wholly, by any means, without the prior written permission of Hikvision. Unless otherwise expressly stated herein, Hikvision does not make any warranties, guarantees or representations, express or implied, regarding to the Document, any information contained herein.

About this Document

Pictures, charts, images and all other information hereinafter are for description and explanation only. The information contained in the Document is subject to change, without notice, due to updates or other reasons.

Please use this Document with the guidance and assistance of professionals trained in supporting the Product.

LEGAL DISCLAIMER

TO THE MAXIMUM EXTENT PERMITTED BY APPLICABLE LAW, THE DOCUMENT IS PROVIDED "AS IS" AND "WITH ALL FAULTS AND ERRORS". HIKVISION MAKES NO REPRESENTATIONS OR WARRANTIES, EXPRESS OR IMPLIED, INCLUDING BUT NOT LIMITED TO, WARRANTIES OF MERCHANTABILITY, FITNESS FOR A PARTICULAR PURPOSE OR NON-INFRINGEMENT. IN NO EVENT WILL HIKVISION BE LIABLE FOR ANY SPECIAL, CONSEQUENTIAL, INCIDENTAL, OR INDIRECT DAMAGES INCLUDING, AMONG OTHERS, DAMAGES FOR LOSS OF BUSINESS PROFITS, BUSINESS INTERRUPTION, OR LOSS OF DATA, CORRUPTION OF SYSTEMS, OR LOSS OF DOCUMENTATION, WHETHER BASED ON BREACH OF CONTRACT, TORT (INCLUDING NEGLIGENCE), OR OTHERWISE, IN CONNECTION WITH THE USE OF THE DOCUMENT, EVEN IF HIKVISION HAS BEEN ADVISED OF THE POSSIBILITY OF SUCH DAMAGES OR LOSS.

The content of this manual is furnished for informational use only and it is subject to change without notice.

TABLE OF CONTENTS

Chapter 1 Firmware Version.....	1
Chapter 2 What's New	1
2.1 New Features.....	1
2.1.1. Support for Chrome browser.....	1
2.1.2. Support DDNS of DynDNS type.....	1
2.1.3. The web supports opening POS video recording.....	1
2.1.4. Support HTTP MJPEG streaming.....	2
2.1.5. Support RTSP over http/https streaming.	2
2.1.6. Onvif reports mate data information.....	2
2.1.7. Support privacy masking.	2
2.1.8. New video playback function.	2
2.1.9. Support plug-in download.....	2
2.1.10. Support to view CPU utilization and other device status.	3
2.1.11. Password validity and password complexity are configurable.....	3
2.1.12. Add SNMP.....	4
2.1.13. Increase font transparency configuration.....	5
2.1.14. ANPR protocol adds direction.....	5
2.1.15. ISAPI gets the history including license plate information.	5
2.1.16. Support snapshot of speeding events.....	5
2.1.17. Support speeding event email alarm.....	5
2.2 Improved Features	6
2.2.1. Support TF card video recording to carry POS information	6
2.2.2. ISAPI listening configuration page is optimized into a separate page.	6
2.2.3. FTP supports the configuration of server address as domain name and supports SFTP.....	6
2.2.4. Support simple recovery, optional retention of some parameters.	7
2.2.5. When the fill light is turned on according to the time, the configuration is easy to cause ambiguity, and the prompt is added.....	7
Chapter 3 Resolved Issues.....	8
Chapter 4 Related product list	8
Customer Impact and Recommended Action.....	9

Chapter 1 Firmware Version

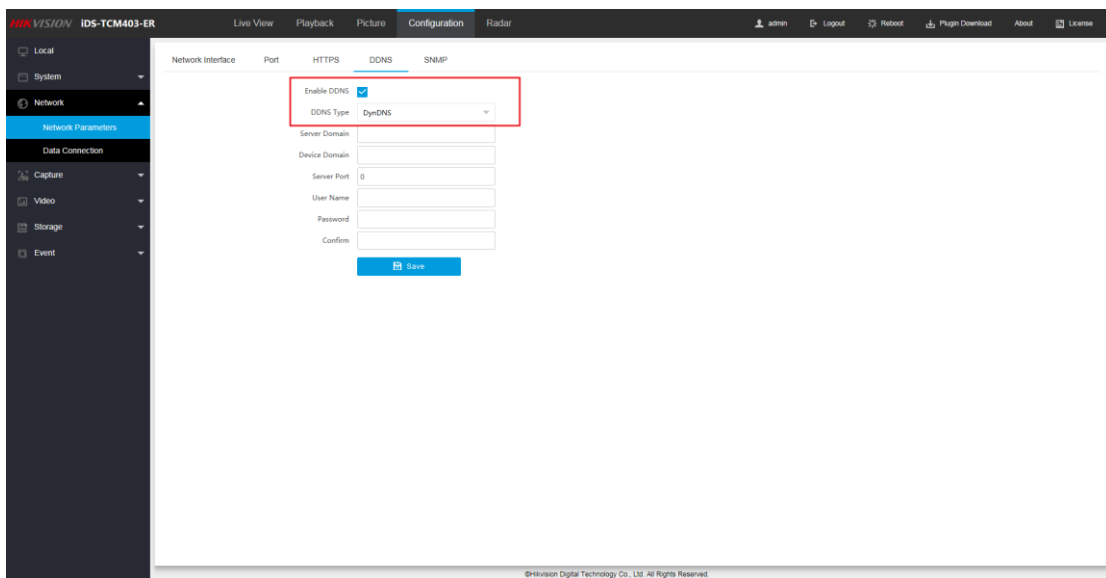
ITCitm403_er_EN_STD_5.0.1_220413

Chapter 2 What's New

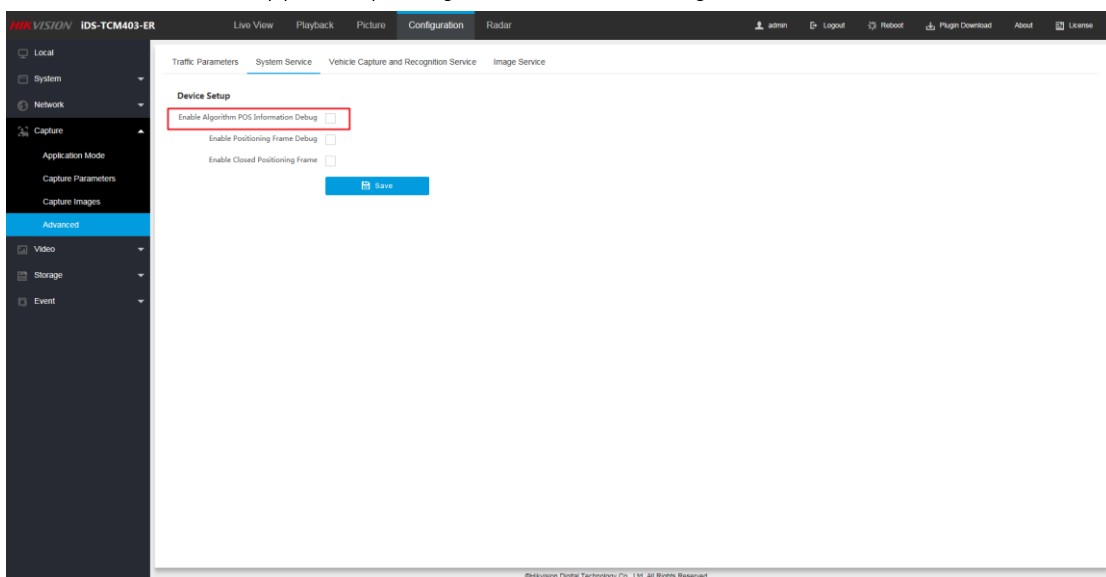
2.1 New Features

2.1.1. Support for Chrome browser.

2.1.2. Support DDNS of DynDNS type



2.1.3. The web supports opening POS video recording.

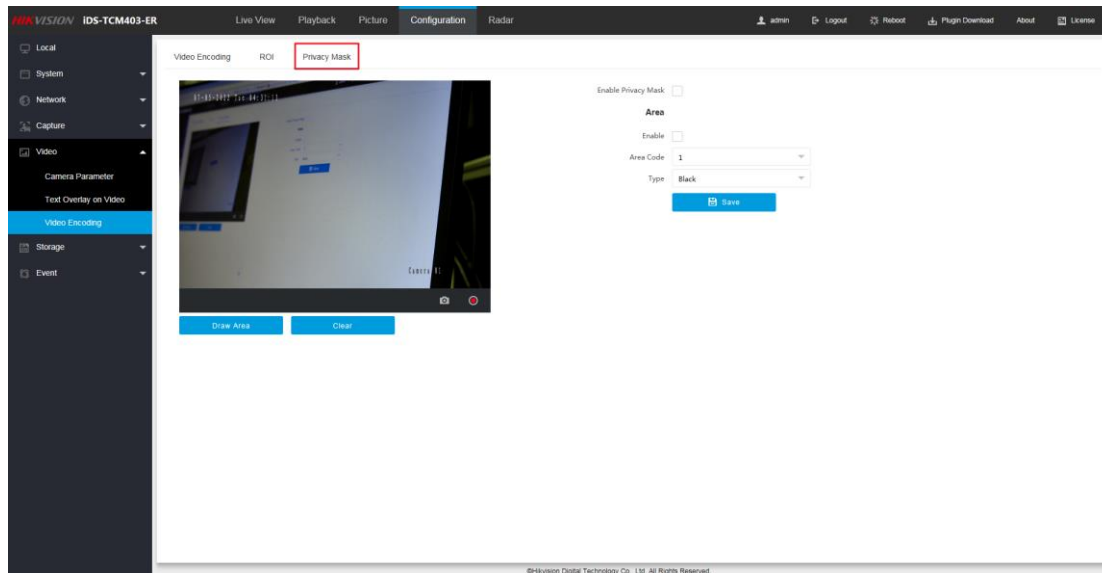


2.1.4. Support HTTP MJPEG streaming.

2.1.5. Support RTSP over http/https streaming.

2.1.6. Onvif reports meta data information.

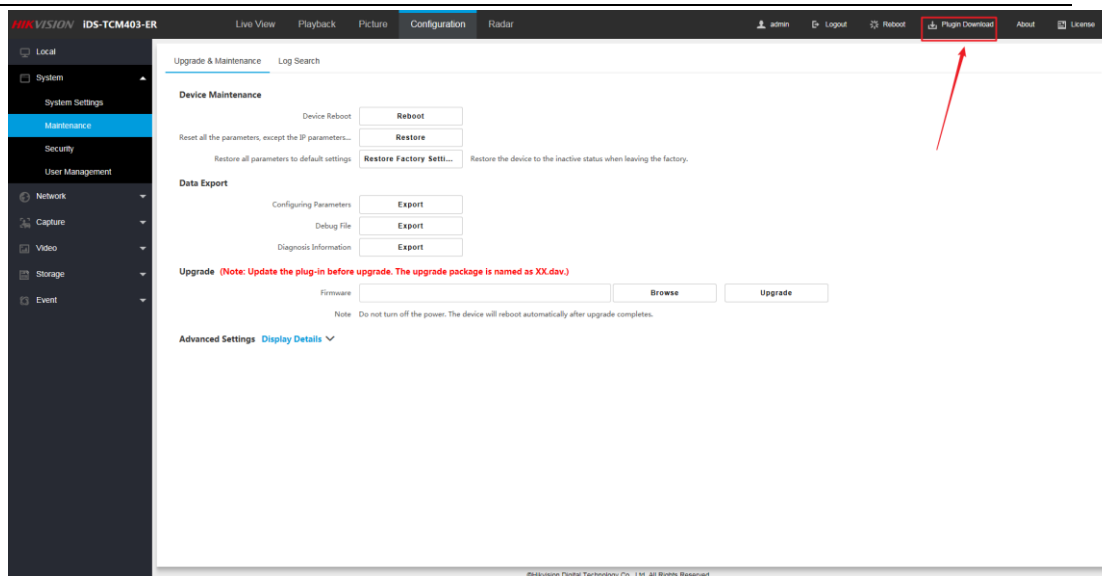
2.1.7. Support privacy masking.



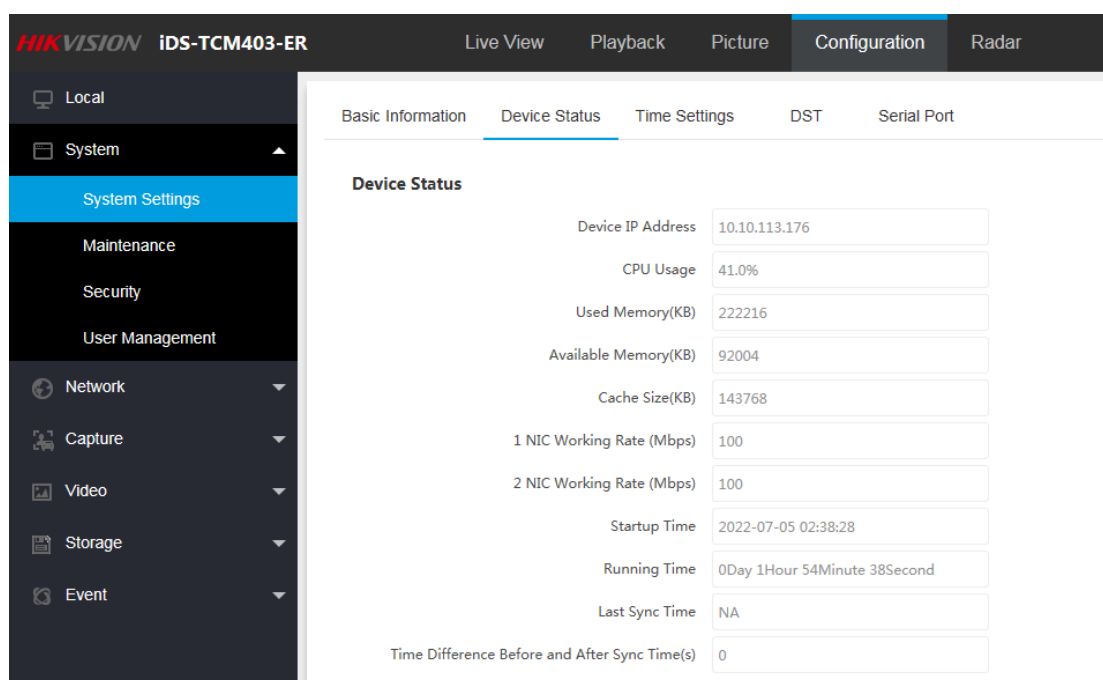
2.1.8. New video playback function.



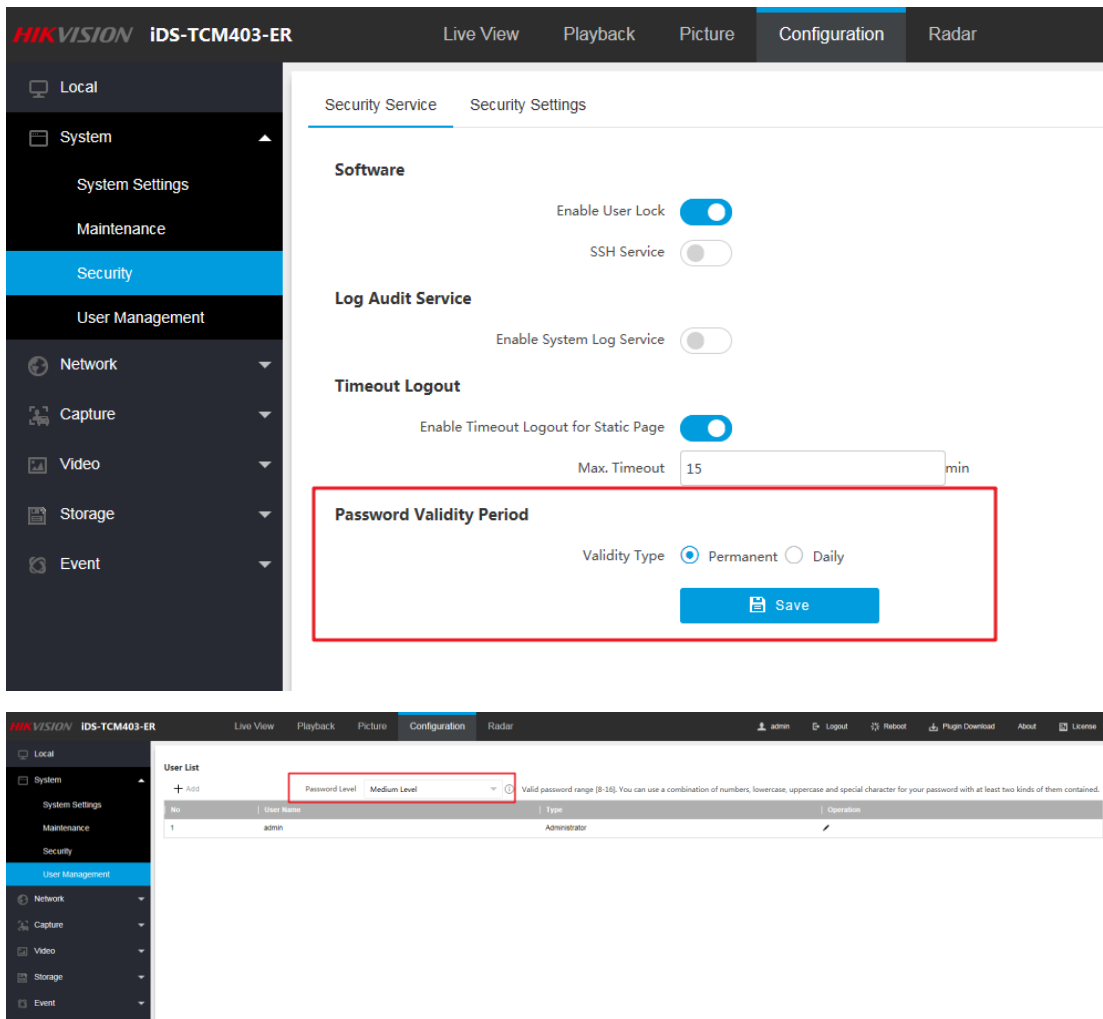
2.1.9. Support plug-in download.



2.1.10. Support to view CPU utilization and other device status.

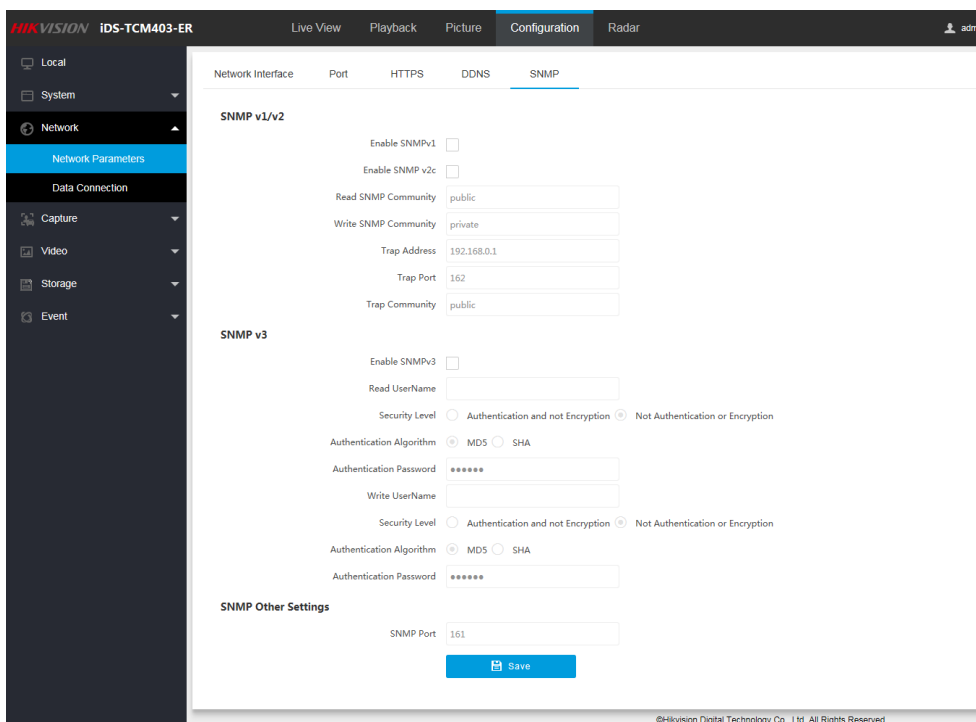


2.1.11. Password validity and password complexity are configurable.



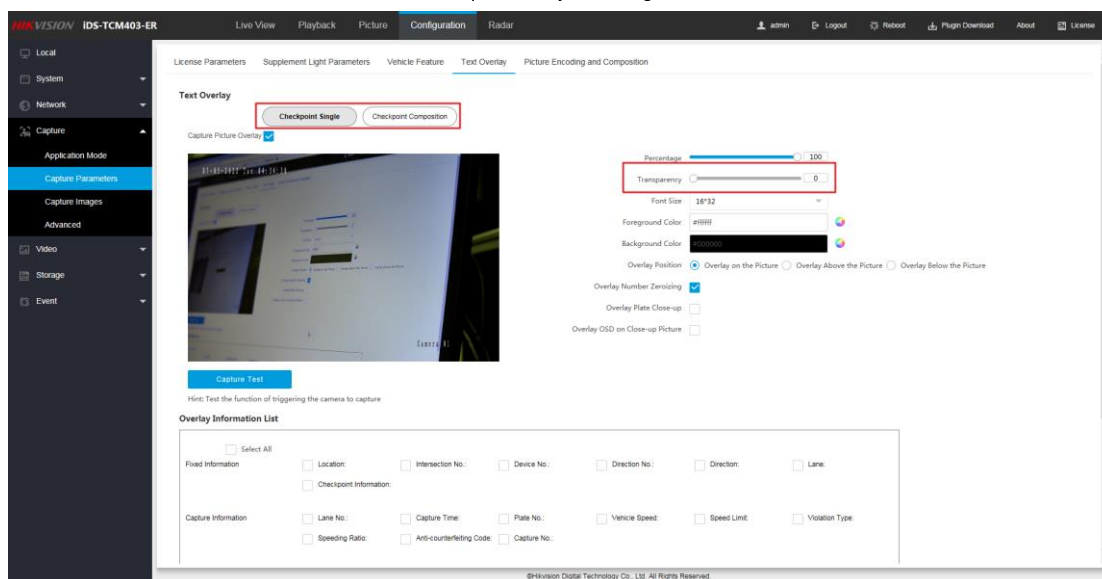
The screenshot displays the HIKVISION IDS-TCM403-ER web interface. The left sidebar shows the navigation menu with 'Security' highlighted. The main content area is titled 'Security Service' and 'Security Settings'. It includes sections for 'Software' (Enable User Lock, SSH Service), 'Log Audit Service' (Enable System Log Service), and 'Timeout Logout' (Enable Timeout Logout for Static Page, Max. Timeout: 15 min). A red box highlights the 'Password Validity Period' section, which includes 'Validity Type' (Permanent, Daily) and a 'Save' button.

2.1.12. Add SNMP



The screenshot displays the HIKVISION IDS-TCM403-ER web interface. The left sidebar shows the navigation menu with 'Network' highlighted. The main content area is titled 'Network Parameters' and 'Data Connection'. It includes sections for 'SNMP v1/v2' (Enable SNMPv1, Enable SNMP v2c, Read SNMP Community, Write SNMP Community, Trap Address, Trap Port, Trap Community) and 'SNMP v3' (Enable SNMPv3, Read UserName, Security Level, Authentication Algorithm, Authentication Password, Write UserName, Security Level, Authentication Algorithm, Authentication Password). A 'Save' button is visible at the bottom.

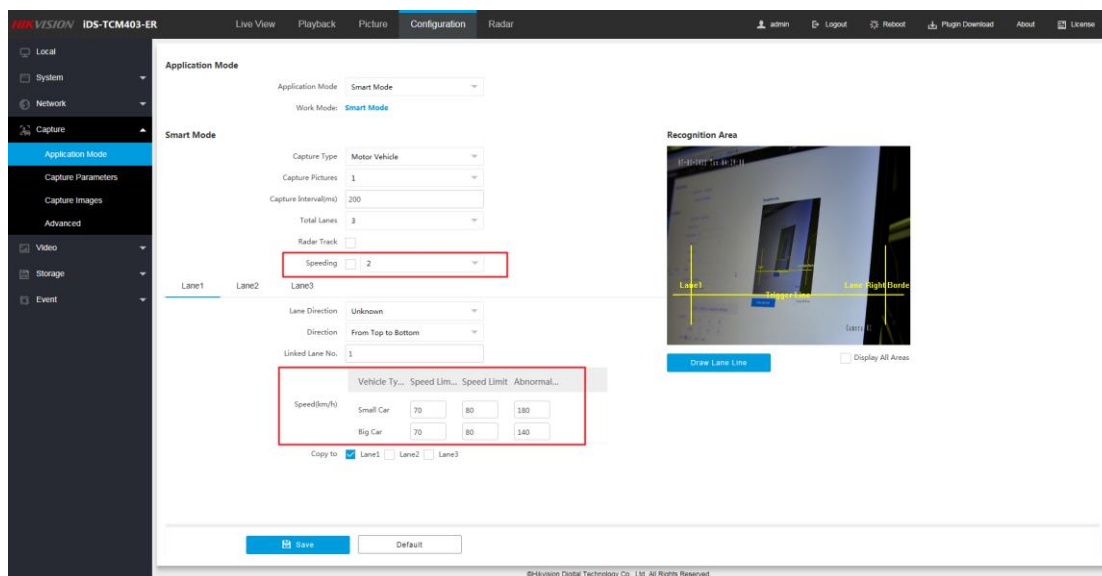
2.1.13. Increase font transparency configuration.



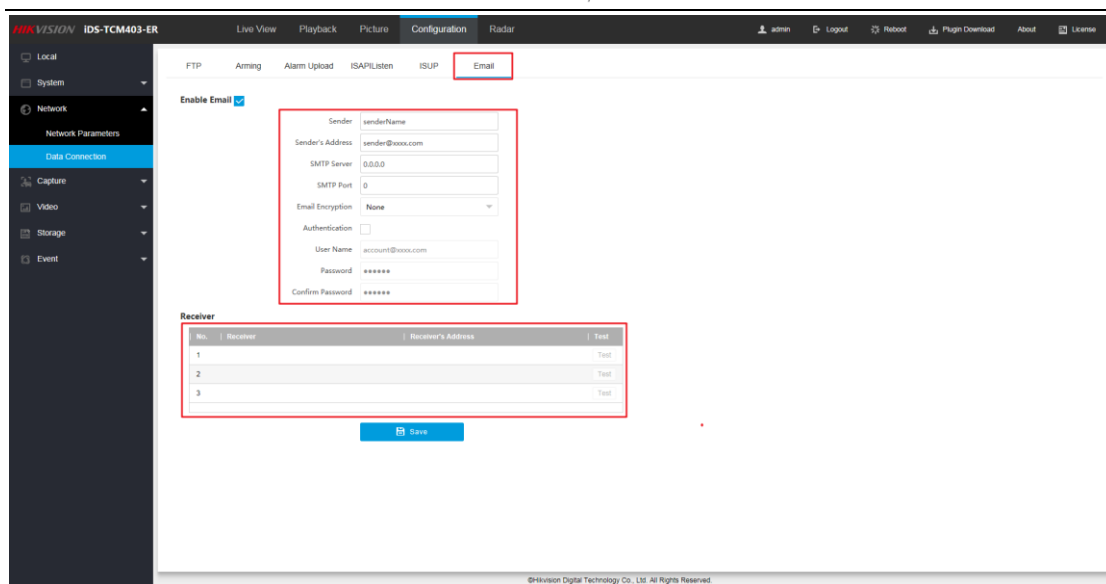
2.1.14. ANPR protocol adds direction.

2.1.15. ISAPI gets the history including license plate information.

2.1.16. Support snapshot of speeding events.



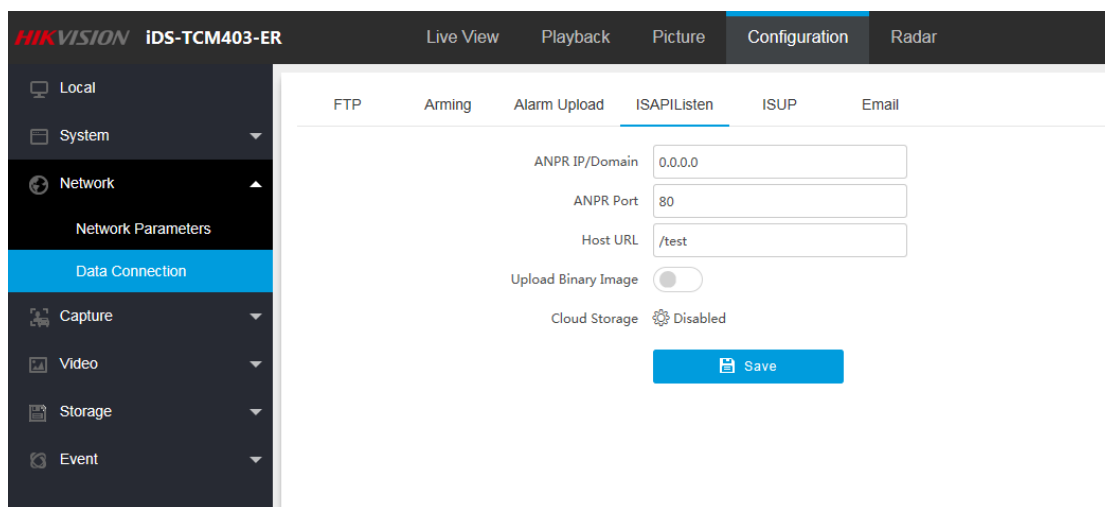
2.1.17. Support speeding event email alarm.



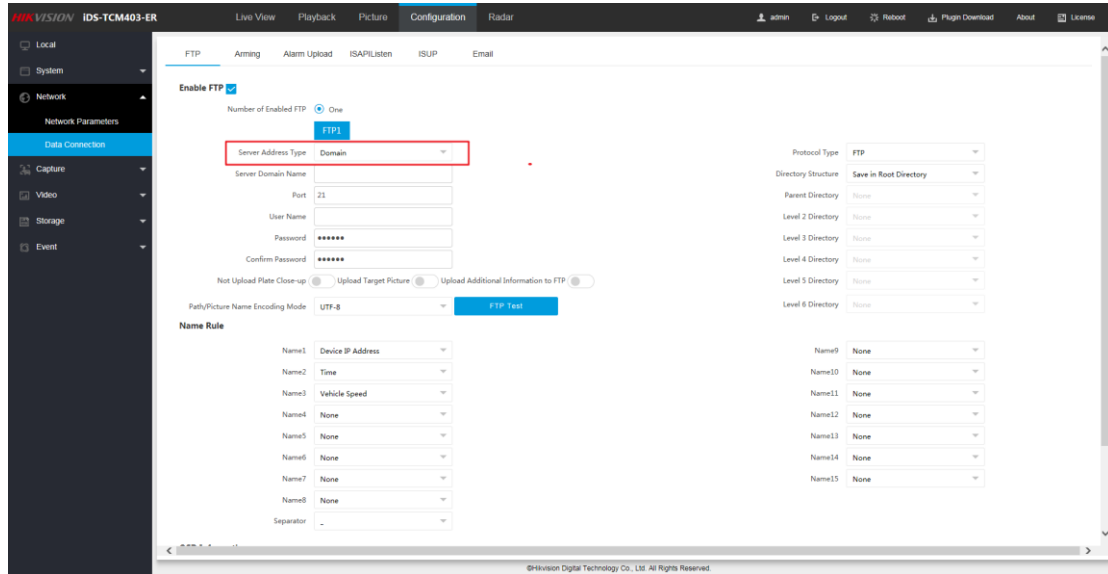
2.2 Improved Features

2.2.1. Support TF card video recording to carry POS information

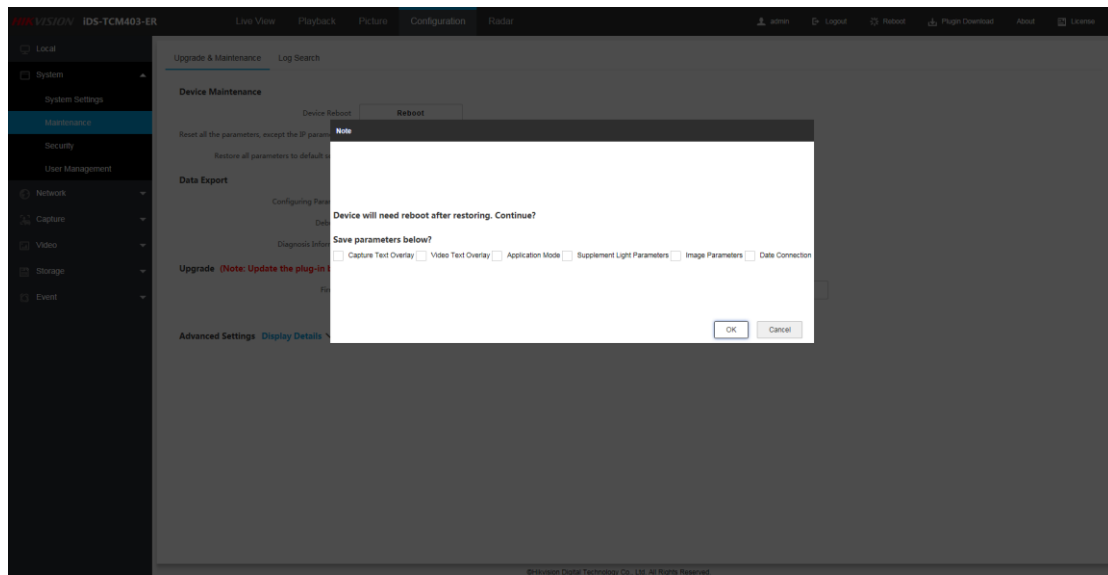
2.2.2. ISAPI listening configuration page is optimized into a separate page.



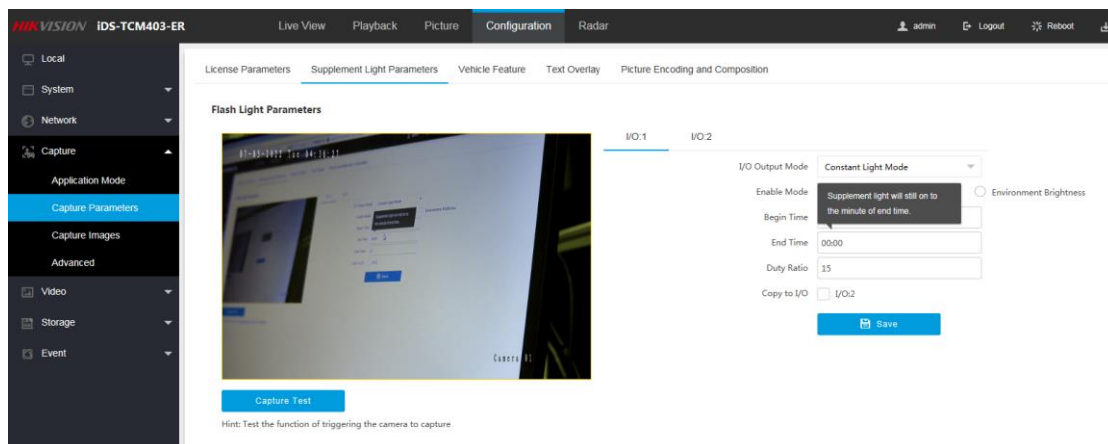
2.2.3. FTP supports the configuration of server address as domain name and supports SFTP.



2.2.4.Support simple recovery, optional retention of some parameters.



2.2.5.When the fill light is turned on according to the time, the configuration is easy to cause ambiguity, and the prompt is added.



Chapter 3 Resolved Issues

The following are issues resolved in this version.

No.	Issue Description

Chapter 4 Related product list

Smart Monitoring Camera	TCM403-ER TCM403-EIR
-------------------------	-------------------------

Customer Impact and Recommended Action

This new firmware upgrade is to improve product performance, and will take effect automatically after upgrading from previous versions. We'd like to inform you the above changes. Also, we are sorry for any possible inconvenience of use-habit changes caused by this action.

For questions or concerns, please contact our local technical support team.

Note

- Hikvision has all rights to alter, modify and cancel this notice.
- Hikvision doesn't give any guarantee for old models' stock.
- Hikvision is not liable for any typing or printing errors.
- For special model's change details, please contact our local technical support team.



See Far, Go Further