

HikDashcam · K60 PRO
User Manual

A Legal Statement

©2021 Hangzhou HikAuto Technology Co., Ltd. All rights reserved.

About this Manual

The Manual includes instructions for using and managing the Product. Pictures, charts, images and all other information hereinafter are for description and explanation only. The information contained in the Manual is subject to change, without notice, due to firmware updates or other reasons.

Trademarks

- **HIKVISION** and other Hikvision's trademarks and logos are the properties of Hikvision in various jurisdictions.
- Other trademarks and logos mentioned are the properties of their respective owners.

Disclaimer

TO THE MAXIMUM EXTENT PERMITTED BY APPLICABLE LAW, THIS MANUAL AND THE PRODUCT DESCRIBED, WITH ITS HARDWARE, SOFTWARE AND FIRMWARE, ARE PROVIDED "AS IS" AND "WITH ALL FAULTS AND ERRORS". HIKAUTO MAKES NO WARRANTIES, EXPRESS OR IMPLIED, INCLUDING WITHOUT LIMITATION, MERCHANTABILITY, SATISFACTORY QUALITY, OR FITNESS FOR A PARTICULAR PURPOSE. THE USE OF THE PRODUCT BY YOU IS AT YOUR OWN RISK. IN NO EVENT WILL HIKAUTO BE LIABLE TO YOU FOR ANY SPECIAL, CONSEQUENTIAL, INCIDENTAL, OR INDIRECT DAMAGES, INCLUDING, AMONG OTHERS, DAMAGES FOR LOSS OF BUSINESS

A Legal Statement

PROFITS, BUSINESS INTERRUPTION, OR LOSS OF DATA, CORRUPTION OF SYSTEMS, OR LOSS OF DOCUMENTATION, WHETHER BASED ON BREACH OF CONTRACT, TORT (INCLUDING NEGLIGENCE), PRODUCT LIABILITY, OR OTHERWISE, IN CONNECTION WITH THE USE OF THE PRODUCT, EVEN IF HIKAUTO HAS BEEN ADVISED OF THE POSSIBILITY OF SUCH DAMAGES OR LOSS.

YOU ACKNOWLEDGE THAT THE NATURE OF INTERNET PROVIDES FOR INHERENT SECURITY RISKS, AND HIKAUTO SHALL NOT TAKE ANY RESPONSIBILITIES FOR ABNORMAL OPERATION, PRIVACY LEAKAGE OR OTHER DAMAGES RESULTING FROM CYBER-ATTACK, HACKER ATTACK, VIRUS INFECTION, OR OTHER INTERNET SECURITY RISKS; HOWEVER, HIKAUTO WILL PROVIDE TIMELY TECHNICAL SUPPORT IF REQUIRED. YOU AGREE TO USE THIS PRODUCT IN COMPLIANCE WITH ALL APPLICABLE LAWS, AND YOU ARE SOLELY RESPONSIBLE FOR ENSURING THAT YOUR USE CONFORMS TO THE APPLICABLE LAW. ESPECIALLY, YOU ARE RESPONSIBLE, FOR USING THIS PRODUCT IN A MANNER THAT DOES NOT INFRINGE ON THE RIGHTS OF THIRD PARTIES, INCLUDING WITHOUT LIMITATION, RIGHTS OF PUBLICITY, INTELLECTUAL PROPERTY RIGHTS, OR DATA PROTECTION AND OTHER PRIVACY RIGHTS. YOU SHALL NOT USE THIS PRODUCT FOR ANY PROHIBITED END-USES, INCLUDING THE DEVELOPMENT OR PRODUCTION OF WEAPONS OF MASS DESTRUCTION, THE DEVELOPMENT OR PRODUCTION OF CHEMICAL OR BIOLOGICAL WEAPONS, ANY ACTIVITIES IN THE CONTEXT RELATED TO ANY NUCLEAR EXPLOSIVE OR UNSAFE NUCLEAR FUEL-CYCLE, OR IN SUPPORT OF HUMAN RIGHTS ABUSES.

IN THE EVENT OF ANY CONFLICTS BETWEEN THIS MANUAL AND THE APPLICABLE LAW, THE LATER PREVAILS.

B Regulatory Information

EU Conformity Statement

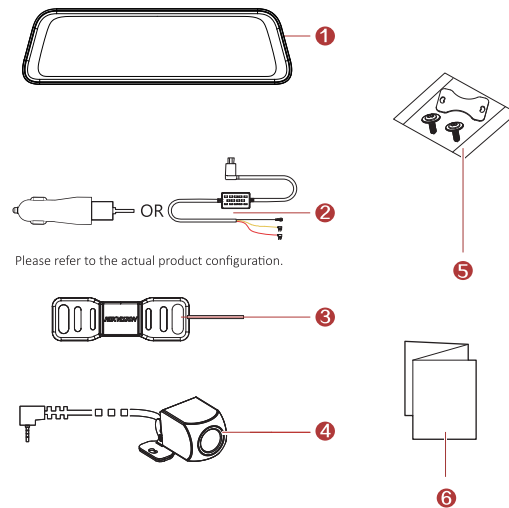
This product and - if applicable - the supplied accessories too are marked with "CE" and comply therefore with the applicable harmonized European standards listed under the RE Directive 2014/53/EU, the EMC Directive 2014/30/EU, the LVD Directive 2014/35/EU, the RoHS Directive 2011/65/EU.

2012/19/EU (WEEE directive): Products marked with this symbol cannot be disposed of as unsorted municipal waste in the European Union. For proper recycling, return this product to your local supplier upon the purchase of equivalent new equipment, or dispose of it at designated collection points. For more information see: www.recyclethis.info.

2006/66/EC (battery directive): This product contains a battery that cannot be disposed of as unsorted municipal waste in the European Union. See the product documentation for specific battery information. The battery is marked with this symbol, which may include lettering to indicate cadmium (Cd), lead (Pb), or mercury (Hg). For proper recycling, return the battery to your supplier or to a designated collection point. For more information see: www.recyclethis.info.

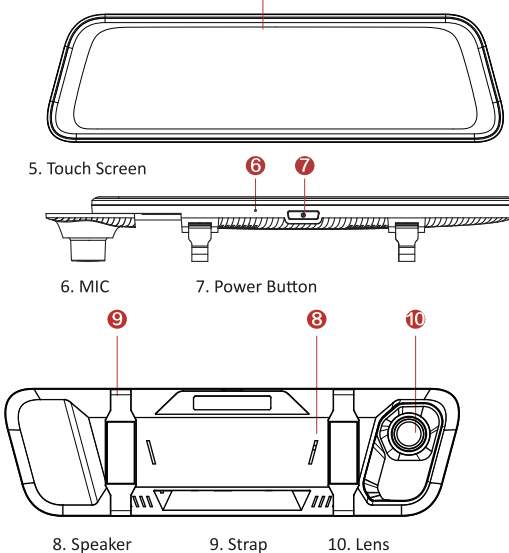
C Packing List

- | | |
|-------------------|--------------------------|
| 1. Dashcam × 1 | 4. Camera × 1 |
| 2. Power Cord × 1 | 5. Accessory Package × 1 |
| 3. Strap × 1 | 6. User Manual × 1 |



D Parts Introduction

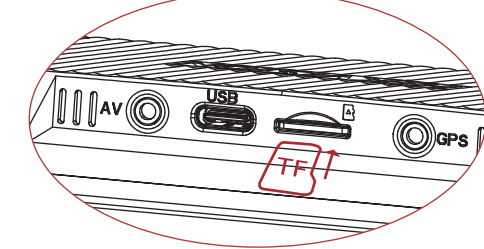
1. Camera Interface 2. USB Interface 3. TF Card Slot 4. GPS Interface



E Install TF Card

Insert TF Card

Insert the golden contact surface of the TF card towards the rear of the dashcam. Push the TF card to the end until it clicks.



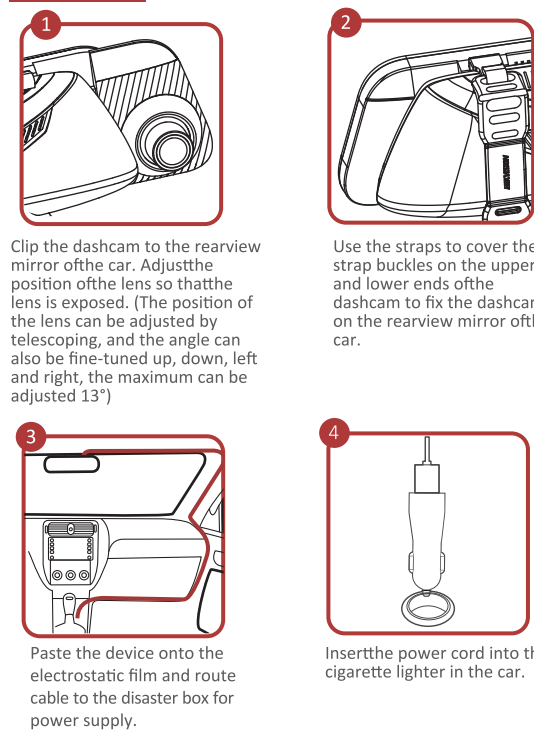
Remove TF Card

Push the edge of the TF card inward until you hear/feel a click, and then push it out of the TF card slot until you can remove it.

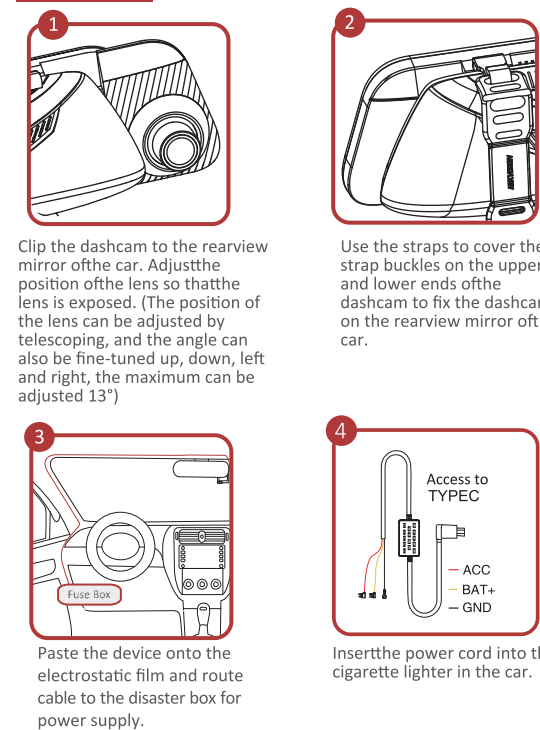
1. Please purchase a TF card from a regular channel. For the stability and efficiency of data storage, it is recommended to use a high-speed TF card above Class10.
2. Before inserting and removing the TF card, please be sure to power off the recorder to avoid damaging the TF card.
3. Please format the TF card with this machine before use.



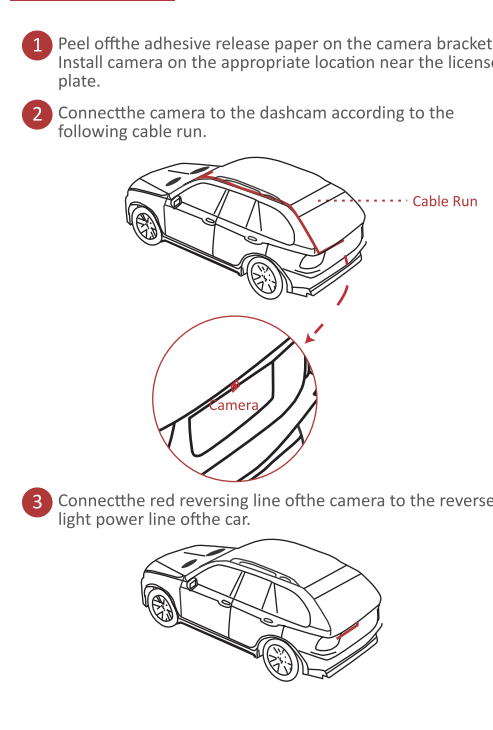
E Installation



E Installation



E Install Camera



F Cautions

Safety Instruction

These instructions are intended to ensure that users can use the product correctly to avoid danger or property loss.

Cautions: Injury or equipment damage may occur if any of the cautions are neglected.

- In the use of the dashcam, you must be in strict compliance with the local laws and regulations.
- You are recommended to install the dashcam on the location of rear mirror to ensure the dashcam can record with the best surveillance view. DO NOT install the dashcam on the location that will block the driver's sight.
- Keep the user manual properly for future reference. See initial connection of dashcam in user manual.
- Purchase the TF card from legal channel. To ensure safe and stable data transmission, it is recommended to use TF card of Class 10 or above.
- Format the new TF card first before using the card.
- To protect TF card from damage, shut down the dashcam before installing and uninstalling TF card.
- If the dashcam is directly connected with the vehicle power system, you are recommended to power off the dashcam when the engine is off. Disconnect cigarette lighter to avoid insufficient voltage and abnormal startup. Reconnect cigarette lighter to ensure dashcam work normally when you start the car again.
- Operating temperature is from -20°C to 70°C (-4°F to 158°F). To protect the dashcam, DO NOT use it in high temperature, low temperature, or high-humidity environment. Keep the dashcam from rain and dust.
- The manual is subject to update. The functions of dashcam may vary according to different models.

*The driving assistance function of the device only sends alarm or warning to the driver and cannot replace the driver's judgement and operation. With the device, you also should drive carefully to avoid traffic accident or violation. Pedestrian or object recognition failure or recognition error may occur due to external factors. DO NOT overly rely on the driving assistance function.

H Mobile Phone Connection



Specifications

Model	AE-DC4928-K60PRO
Aperture	F2.0
Pixel	1440P
Max Resolution	2560*1440P
Angle	0120°*105°*52°
Screen	9.35inch
Storage	TF card, 32 GB to 256 GB
G-Sensor	Built-in, collision triggered recording and recording lock
Wi-Fi	Yes
Bluetooth	No
Sound Recording	Yes
Power Supply	5V 2.5A
Power Consumption	<7 W (with rear camera)
Operating Temperature and Humidity	-20 °C to 70 °C (-4 °F to 158 °F), RH 95%
Power Interface	Type C
Dimensions(L*W*H)	264 mm*74 mm*40 mm
Weight	Approx. 340g

I Troubleshooting

Trouble	Solution
The dashcam drops easily.	<ul style="list-style-type: none">• Clean the windshield before installation.• Check whether the 3M tape is tightly stuck to the electrostatic film before the installation.
Starting the dashcam failed.	<ul style="list-style-type: none">• Check whether the vehicle is started and power supply is normal.• Check whether the car charger is tightly connected.• Restore to defaults: hold the RESET button until the startup music is heard.
The dashcam powers off easily.	<ul style="list-style-type: none">• Make sure the power cord is in good condition.• Make sure the power cord is tightly connected to the according interfaces.
Recording is abnormal and indicator is unlit.	<ul style="list-style-type: none">• Make sure that the dashcam started up successfully.• Check whether the TF card is inserted.• Check the status of TF card, e.g. its format, its lifespan.• Change TF card if it is not well.
Recording is blurred.	<ul style="list-style-type: none">• Make sure the protective film is peeled off.• Check whether the windshield or the lens of dashcam is blurred.
Recording is mute.	<ul style="list-style-type: none">• Set audio settings on the device or turn on sound recording in HikDashcam app.• Turn on sound through the the audio control function of the dashcam.
Dashcam reboots itself.	<ul style="list-style-type: none">• Check whether the car charger is tightly connected.• Check whether the car charger is equipped with power supply interface of 5 VDC, ≥ 2 A.
Mobile phone cannot connect to dashcam.	<ul style="list-style-type: none">• Make sure HikDashcam app is installed.• Please restart the dashcam to the app.

H Troubleshooting

Trouble	Solution
The mobile phone cannot display recordings.	<ul style="list-style-type: none">• It may be relevant with the player or system of the phone. Please connect TF card to your computer and display the recordings.
TF card is not detected when you connect dashcam to computer with the supplied power cord.	<ul style="list-style-type: none">• Dashcam does not support data transmission and the supplied power cord is only for charging.• If you need to transfer data, please connect TF card to your computer.
Wi-Fi connection takes a long time.	<ul style="list-style-type: none">• It may be caused by the interference of the surrounding Wi-Fi signals. Please use the dashcam in an environment of less interference.
Dashcam Wi-Fi password is forgotten.	<ul style="list-style-type: none">• Shut down unnecessary programs in your phone to release some resources for HikDashcam app and reconnect Wi-Fi.• The default password is 1234567890. If you have revised the password, regain the password by the following steps:<ol style="list-style-type: none">1. Hold the RESET button on dashcam until the startup music is heard and the dashcam is restored to defaults.2. Go to Wi-Fi Connection interface in HikDashcam app.3. Select Wi-Fi SSID and log in with default password 1234567890.
No GPS signal.	<ul style="list-style-type: none">• Check whether the GPS function is enabled. Normally, the GPS function is enabled by default.• Make sure the device is not in the places of weak signal or no signal, such as underground garage.• Make sure there is no metal around the device because metal will interfere with GPS signal.• Make sure the location where the device is installed is not pasted with radiation protection film. The film will interfere with GPS signal.