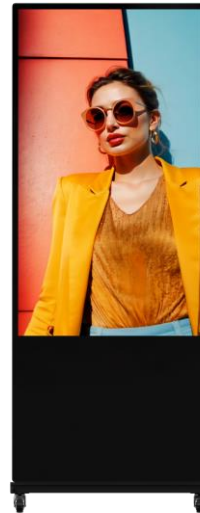


DS-D6055UT-D/S 55-inch Touchable Slim Floor Standing Digital Signage



- 10-point capacitive touch, suitable for installing self ordering or navigation applications, facilitating self-service operation.
- Metal shell appearance, slim frame, and all-in-one design, suitable for advertising display at store entrances.
- Exquisite image, industrial A+ panel, auto-coloring and image-enhancing engine.
- Frosted glass, anti-glare, clearer images, and wider viewing angles.
- Variable materials, static and dynamic materials, including pictures, audio, video, scrolling subtitle, PDF, webpages, live video, number calling, pop-up pictures, etc.
- Flexible program schedule, free schedules and district play of multiple materials and variable play modes: play by day, play by week, play by loop, custom play, etc.
- Centralized management, remotely control and manage one screen or more screens, such as timed startup/shutdown, quick startup/shutdown, brightness/volume timed adjustment, and screenshot preview, remotely release programs and updates local (USB) programs.
- Organization permission, 5-level organization is available for managing materials, programs, terminals, and users, and support creating custom users, allocating permission for users according to user level, and permission templates.
- Multiple security safeguards, 3-level check of materials, programs and schedules to prevent mistake release, encryption of data in storage and transmission to prevent data tampering, and with no default password, users can activate and set initial password to guarantee the password safety.

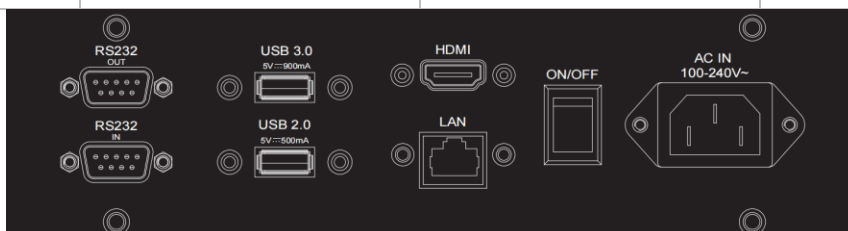
▪ Specification

Product Model	
Product Model	DS-D6055UT-D/S
Display	
Screen Size	55 inch
Resolution	2160 × 3840
Active Display Area	1209.6 (H) × 680.4 (V) mm
Pixel Pitch	0.315 (H) mm × 0.315 (V) mm
Backlight	E-LED
Viewing Angle	178°(H)/178°(V)
Contrast Ratio	1200:1
Brightness	500 cd/m ²
Color Depth	10 bit (8 bit + FRC)
Response Time	8 ms
Color Gamut	72% NTSC
Reliability	7 × 24h
Refresh Rate	60 Hz
Haze	25%
Display Ratio	9:16
Panel Type	IPS
Touch	
Touch Type	Capacitive Touch (G+G)
Touch Point	10
Touch Response Time	< 25 ms
Touch Precision	± 2 mm
Built-in System	
Operation System	Android 13
Processor	Cortex-A55, 4-core, main frequency 1.92 GHz
Memory	4 GB
Built-in Storage	32 GB EMMC
Interface	
Video & Audio Input	HDMI 2.0 (HDCP 2.2) × 1
Video & Audio Output	Speaker (8Ω 5 W) × 2
Network Interface	RJ45 × 1, Wi-Fi (2.4G/5G, 802.11 a/b/g/n/ac/ax) × 1, RS232 in × 1, RS232 out × 1
Data Transmission Interface	USB 2.0 × 1, USB 3.0 × 1, BT 5.4 × 1
Power	
Input Voltage	100 to 240 VAC, 50/60 Hz
Standby Consumption	≤ 0.5 W
Power Consumption	108 W (typ), 155 W (max)
Working Environment	
Working Temperature	0 °C to 40 °C (32 °F to 104 °F)
Working Humidity	10% to 80% RH (Condensation)
Storage Temperature	-20 °C to 60 °C (-4 °F to 140 °F)
Storage Humidity	10% to 90% RH (Condensation)
General	
Mounting Type	Floor standing

Product Dimensions (W × H × D)	740 (W) mm × 1886 (H) mm × 480 (D) mm (With Stand)
	727 (W) mm × 1776 (H) mm × 63.8 (D) mm (Without Stand)
Package Dimensions (W × H × D)	840 (W) mm × 1895 (H) mm × 155 (D) mm
Net Weight	46.5 kg
Gross Weight	52 kg
Packing List	Digital signage×1, stand × 1, power cord × 1, user manual × 1, quick start guide × 1, Regulation Compliance and Safety Information × 1, stand fixed with M8 screw × 6, key × 2, foot pad ×4, energy efficiency label × 1, caster wheel × 4, wheel fixed with M4 screw × 16, Base fixed bracket × 2 , Base fixed bracket with M4 screw × 4, Expansion screw × 2

▪ Physical Interface

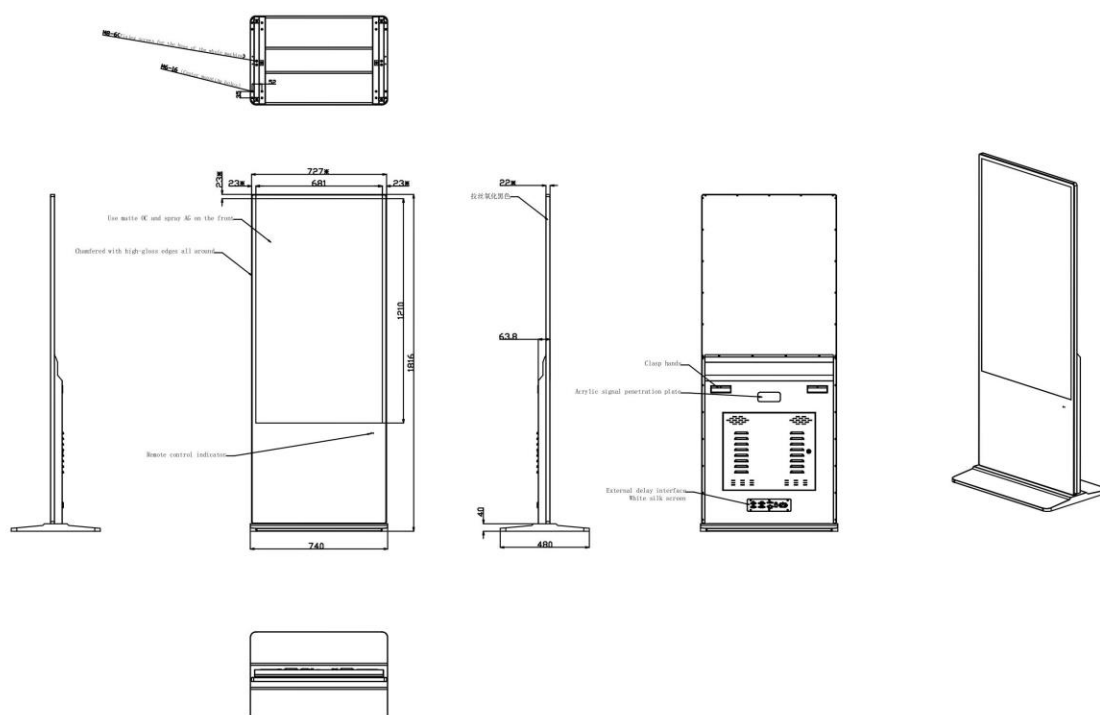
Interface	Description	Interface	Description
LAN	100M/1000M Ethernet interface	HDMI 1	HDMI digital signal input interface
RS232 OUT	RS232 control out	RS232 IN	RS232 control in
USB3.0	USB 3.0 interface	USB3.2	USB 2.0 interface



▪ Available Model

DS-D6055UT-D/S

▪ Dimension



See Far, Go Further



www.hikvision.com
support@hikvision.com

