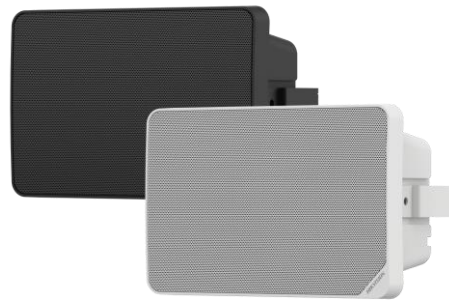


DS-QAE0120G1R/EN
Analog Cabinet Speaker 20W EN54



- By using U-brackets, the installation surface angle can be adjusted for convenient installation
- Support horizontal and vertical installation

▪ Specification

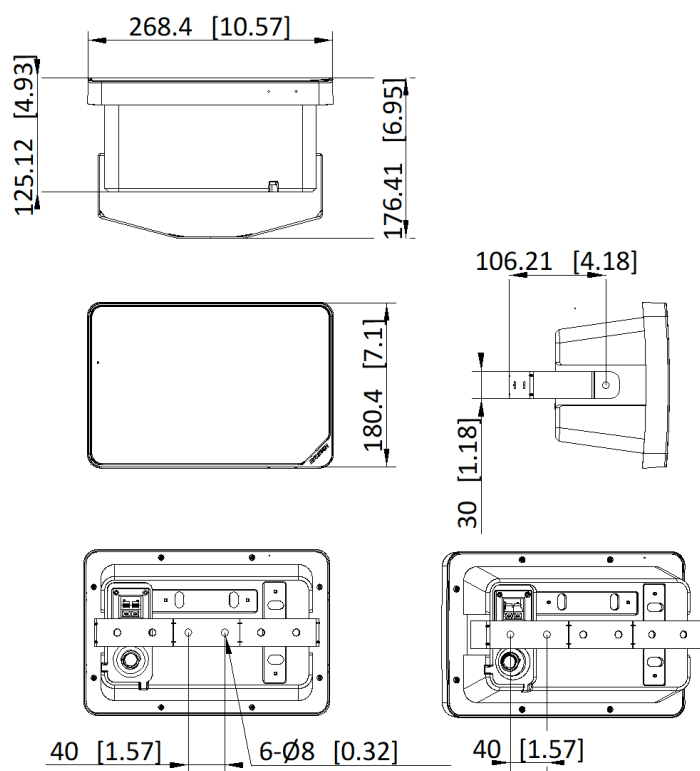
Speaker	
Rated Power	70 V: 5 W/10 W/15 W/20 W 100 V: 5 W/10 W/15 W/20 W
Impedance	8 Ω
Max. Acoustic Pressure	103 dBSPL
Sensitivity(1 m, 1 W)	90 dB \pm 3dB
Direction	All directions
Frequency Response	130 Hz to 17.5 kHz
Speaker Unit	5.25" \times 1
Interface	
Audio In	Fixed pressure in 100 V/Fixed pressure in 70 V/Fixed resistance input 8 Ω \times 1
General	
Material	Main body&Front cover : plastic, bracket: metal
Operating Temperature	-30 $^{\circ}$ C to 60 $^{\circ}$ C (-22 $^{\circ}$ F to 140 $^{\circ}$ F)
Operating Humidity	< 90% (No condensation)
Dimension	268.4 mm \times 180.4 mm \times 125.12 mm (10.57" \times 7.1" \times 4.93")
Package Dimension	340 mm \times 306 mm \times 180 mm (13.39" \times 12.05" \times 7.09")
Weight	Approx. 1.5 kg (3.3 lb.)
With Package Weight	Approx. 2 kg (4.4 lb.)
Color	White or black appearance optional
Packing List	Device \times 1 U-shaped bracket \times 1 Screw pack \times 1 Installation sticker \times 1 Regulatory Compliance and Safety Information \times 1

▪ Available Model

DS-QAE0120G1R/EN/WHITE

DS-QAE0120G1R/EN/BLACK

▪ Dimension



Unit: mm [inch]

SCALE	1:1
-------	-----

See Far, Go Further



www.hikvision.com
support@hikvision.com

