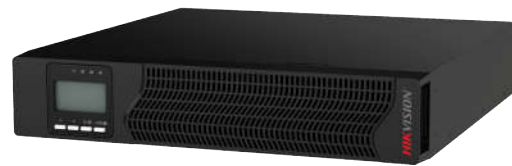


## DS-UPSxxKxx-R/TJS/X Online UPS



- Double conversion on-line design with input power factor correction (PFC) technology, achieving an input power factor of up to 0.99.
- Digital control system for enhanced stability and reliability.
- ECO operation mode for improved energy efficiency and reduced user costs.
- Three-stage charging: constant current charging, constant voltage charging, and floating charging stages are intelligently managed.
- Wide voltage input and frequency range for stable operation with different electrical scenario, and suit with various fuel generators.
- Comprehensive protections including output overload, output short-circuit, over-temperature, battery under-voltage warning, battery over-charging protection, and power-on self-diagnostic function;

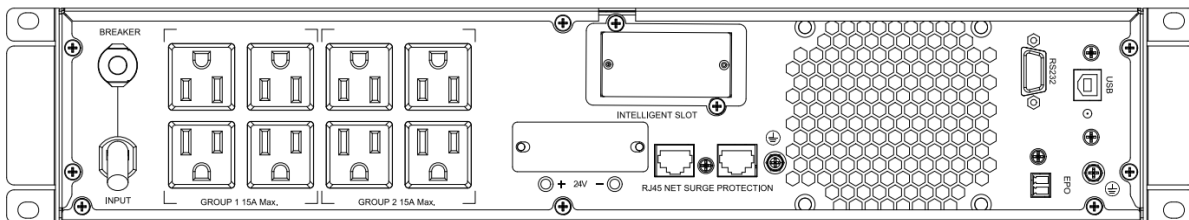
## ▪ Specification

Model		DS-UPS01K24-R/TJS/X	DS-UPS02K48-R/TJS/X	DS-UPS03K72-R/TJS/X
Power	Capacity	1000VA/900W	2000VA/1800W	3000VA/2700W
Input	Nominal Voltage	100/110/115/120/125Vac		
	Input Voltage Range	55~150Vac (90~150Vac @ 100% load)		
	Input Frequency	Frequency range 40~70Hz (50/60Hz Auto-Sensing)		
	Phase	Single Phase		
	Power factor	≥0.99		
Output	Output Voltage	100/110/115/120/125Vac		
	Output Waveform	Pure Sinewave		
	Power factor	0.9		
	Output Sockets	US panel		
	Output Frequency	Line mode: 46~54Hz/56~64Hz, synchronize with input Bat. Mode: 50/60±0.1Hz		
	Crest factor	3:1		
	Harmonic distortion (THDv)	≤2% Linear load ≤5% Non linear load		
	Transfer Time	AC mode to Bat.mode: 0ms Inverter to Bypass: 4ms (Typical)		
Battery	Battery Type	Valve Regulated Lead Acid (VRLA)		
	Typical Recharging Time	4 hours (To 90% of full capacity)		
	Capacity (Standard Unit)	12V/9Ah		
	Battery Number	2	4	6
	DC System Voltage (VDC)	24V	48V	72V
	Charging Current (Max.)	2A		
	Expandable Runtime	Yes, External battery pack: DS-UPSB0924B-R/TJ	Yes, External battery pack: DS-UPSB0948B-R/TJ	Yes, External battery pack: DS-UPSB0972B-R/TJ
Indicator	LCD display	Input voltage, Input frequency, Output voltage, Output frequency, Load percentage, Battery voltage, Inner temperature & Remaining battery backup time		
	Alarm	Battery mode/Battery low voltage /Overload/Fault		
Efficiency	AC Mode	91%	92%	92%
	Battery Mode	95%	96%	96.5%
Environment	Operating Temperature	0°C~40°C		
	Storage Temperature	-25°C~55°C		
	Humidity Range	0~95%RH @ 0~40°C (Non condensing)		
	Altitude	<1500m, derating required when>1500m		

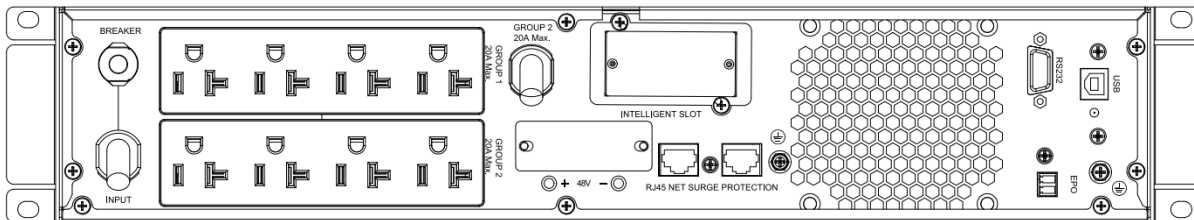
	Noise Level	<55dB at 1 Meter		
Physical	Dimension W x D x H (mm)	440 x 325 x 86.5	440 x 640 x 86.5	440x640 x 86.5
	Net weight (kg)	12.1	27.9	28.7
Standards	Safety	UL1778 5th Edition CSA C22.2 NO.107.3-14		
	EMC	ICES-003 Issue 7:2020		

## Dimension

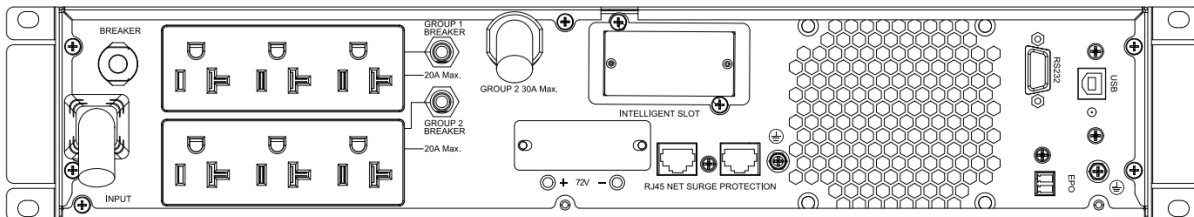
### DS-UPS01K24-R/TJS/X



### DS-UPS02K48-R/TJS/X



### DS-UPS03K72-R/TJS/X



# See Far, Go Further



[www.hikvision.com](http://www.hikvision.com)  
[support@hikvision.com](mailto:support@hikvision.com)

