

## **DS-3E0505P-E(B)** **4 Port Gigabit Unmanaged PoE Switch**



DS-3E0505P-E(B) is a layer 2 PoE network switch developed by Hikvision, providing PoE power supply technology on the basis of gigabit network access to ensure stable data upload.

- 4 x Gigabit PoE Ports, 1 x Gigabit Uplink Port
- Total PoE Power Budget 60 W
- IEEE802.3af/at Compliant, and 30 W Max. Output Power for Each Port
- 6 kV Surge Protection
- PD Power Intelligent Detection with System-Level Overload Protection
- Silent Running with Fanless Design
- Desktop/Wall Installation

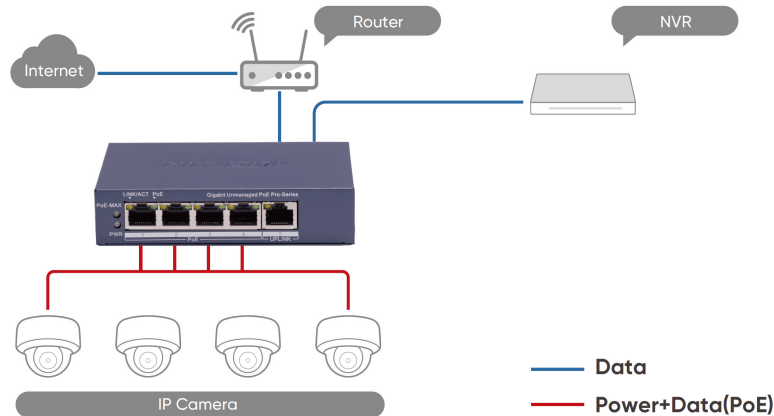
## ▪ Specification

General	
Shell	Metal material
Net Weight	0.25 kg (0.55 lb)
Gross Weight	0.74 kg (1.63 lb)
Dimensions (W × H × D)	121.1 mm × 27.6 mm × 83.1 mm (4.76" × 1.08" × 3.27")
Operating Temperature	0 °C to 40 °C (32 °F to 104 °F)
Storage Temperature	−40 °C to 85 °C (−40 °F to 185 °F)
Operating Humidity	5% to 95% (no condensation)
Relative Humidity	5% to 95% (no condensation)
Power Supply	54 V DC, 1.2 A
Max. Power Consumption	≤ 65 W
Power Consumption in Idle	5 W
Installation Mode	Desk-Mounted, Wall-Mounted
Surge Protection	6 kV
Network Parameters	
Ports	4 × Gigabit PoE port, 1 × Gigabit RJ45 port
MAC Address Table	2 K
Switching Capacity	10 Gbps
Packet Forwarding Rate	7.44 Mpps
Internal Cache	1 Mbits
PoE Power Supply	
PoE Standard	IEEE 802.3af; IEEE 802.3at
PoE Power Pin	End-span: 1/2(-), 3/6(+)
PoE Port	PoE: Ports 1 to 4
Max. Port Power	30 W
PoE Power Budget	60 W
Approval	
EMC	CE-EMC (EN 55032: 2015+A11: 2020, EN IEC 61000-3-2: 2019, EN 61000-3-3: 2013+A1: 2019, EN 50130-4: 2011+A1: 2014, EN 55035: 2017+A11: 2020)
Safety	CB (AMD1:2009, AMD2:2013, IEC 62368-1: 2014 (Second Edition), CE-LVD (EN 62368-1: 2014+A11: 2017)
Chemistry	CE-RoHS (2011/65/EU); WEEE (2012/19/EU); Reach (Regulation (EC) No.1907/2006)

## ▪ Available Model

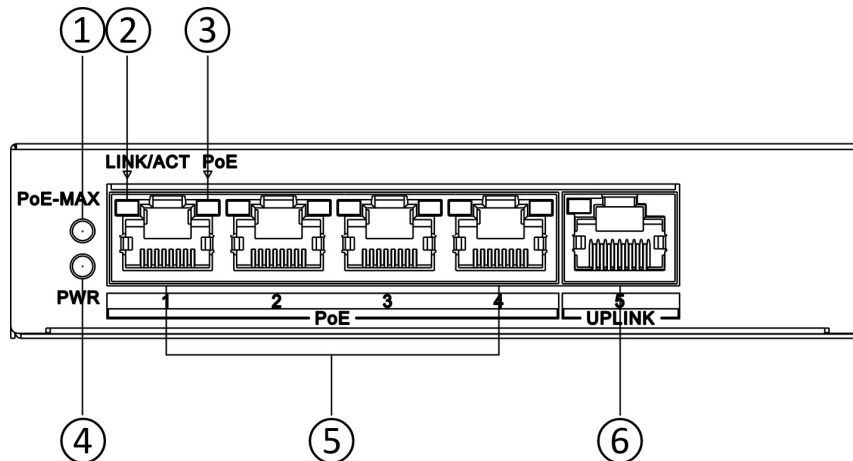
DS-3E0505P-E(B)

## ▪ Typical Application

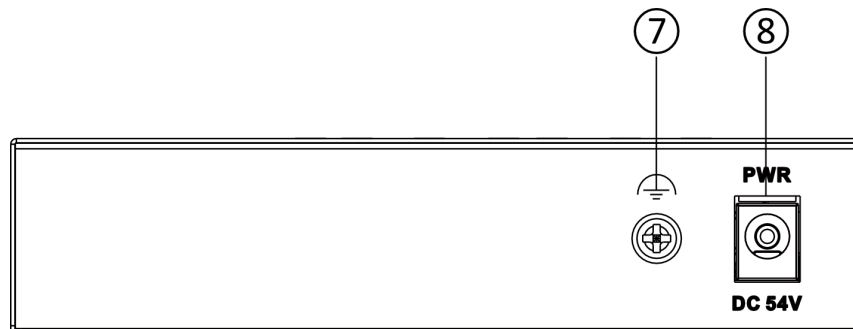


## ▪ Physical Interface

Front Panel



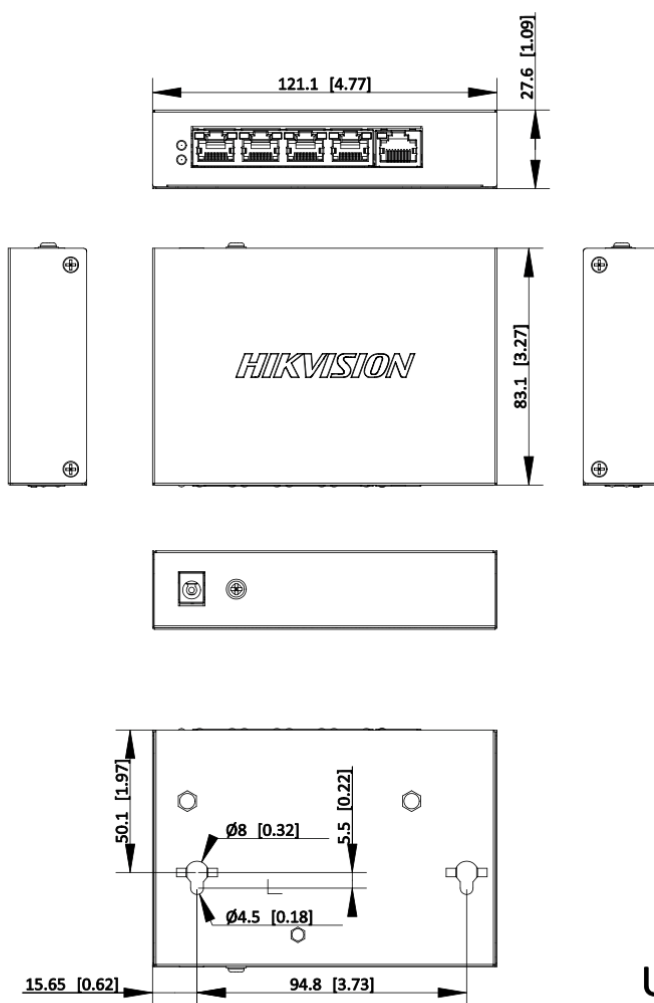
Rear Panel



No.	Indicator/Port	Description
①	PoE-MAX Indicator	<ul style="list-style-type: none"> <li>● Solid on/Flashing: The output power of the switch is about to reach or has reached the upper limit. The power supply may be abnormal if more devices are connected.</li> <li>● Unlit: The switch does not supply power to a powered device (PD), or supplies power to a PD normally and its output power does not reach the upper limit.</li> </ul> <p>Note: The PoE-MAX indicator will be unlit in 5 seconds after the output power of the switch returns to normal.</p>
②	LINK/ACT Indicator	<ul style="list-style-type: none"> <li>● Solid on: The port is connected.</li> <li>● Flashing: The port is transmitting data.</li> <li>● Unlit: The port is disconnected or connection is abnormal.</li> </ul>

③	PoE Indicator	<ul style="list-style-type: none"> <li>● Solid on: The switch provides power supply to a PD normally.</li> <li>● Unlit: The switch is disconnected to a PD, or provides power supply to a PD abnormally.</li> </ul>
④	PWR Indicator	<ul style="list-style-type: none"> <li>● Solid on: The switch is powered on normally.</li> <li>● Unlit: No power supply is connected or power supply is abnormal.</li> </ul>
⑤	Gigabit PoE RJ45 Port	Used for connection to a PD via a network cable.
⑥	Gigabit RJ45 Port	Used for connection to another device via a network cable.
⑦	Grounding Terminal	Used for connection to a grounding cable to protect the switch from lightning.
⑧	Power Supply	Use the attached power cord and power adapter to connect the switch to a power socket.

## ▪ Dimension



Unit: mm [inch]

SCALE 1:1

# See Far, Go Further



[www.hikvision.com](http://www.hikvision.com)  
[support@hikvision.com](mailto:support@hikvision.com)

