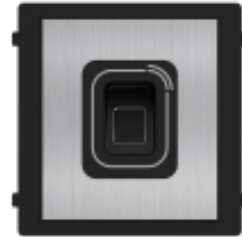


DS-KD-MFB/S **Fingerprint & Card Reader Sub Module**



- Fingerprint & card reader module of modular door station
- Integrate with M1/Desfire card reader
- IP65 protection level
- Easy to use and extend
- Compatible with IP, 2-wire IP and 2-wire HD modular door station (Except for DS-KD8003-IME2 (non-Y version))

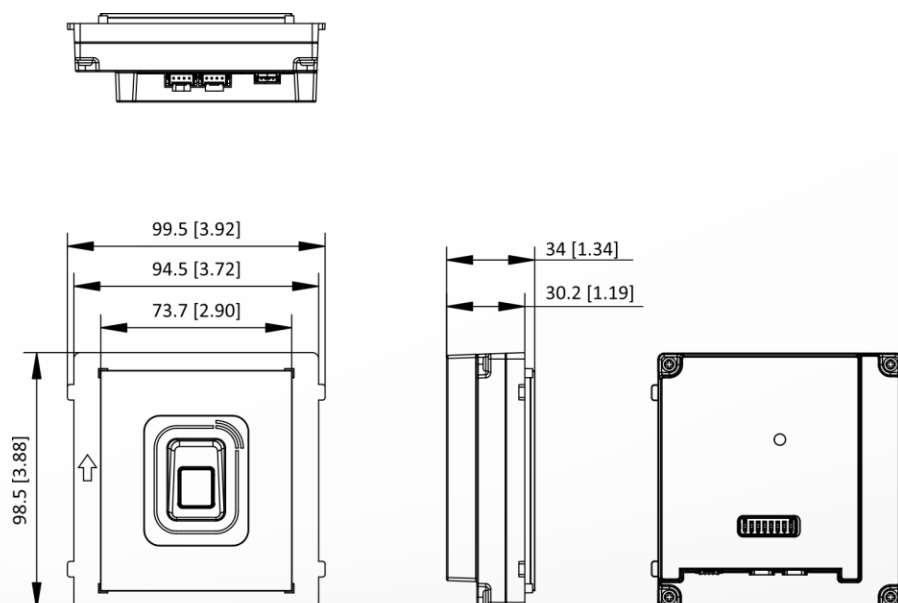
▪ Specification

Capacity	
Fingerprint capacity	1000
Card capacity	6000
Authentication	
Card reading frequency	13.56 MHz
Card reading distance	2 cm
Card type	M1, Desfire card
Device interfaces	
DIP switch	8 bits
RS-485	1
General	
Installation	Flush mounting, surface mounting
Protective level	IP65
Working temperature	-30 °C to 60 °C
Working humidity	10% to 90% (no-condensing)
Dimension (W × H × D)	100 mm × 100 mm × 35 mm (3.94" × 3.94" × 1.38")
Power supply	12 VDC, supplied by the main module
Power consumption	≤ 4 W
Language	English, Arabic, French, Russian, Spanish, Italian, German, Polish, Turkish, Portuguese, Portuguese (Brazil), Uzbek, Kazakh, Czech, Hungarian, Dutch, Romanian, Bulgarian, Ukrainian, Croatian, Serbian, Greek, Lithuanian, Estonian, Latvian, Norwegian, Danish, Slovenian, Slovak, Hebrew, Swedish, Finnish, Mongolian, Vietnamese, Traditional Chinese
Material	Stainless Steel

▪ Available Model

DS-KD-MFB/S

▪ Dimension



Unit: mm [inch]

▪ Accessory

▪ Optional

DS-KD7000EY-ME2/ Aluminum	DS-KD7003EY-IME2 /Aluminum	DS-KD7000EY-ME2	DS-KD8003Y-IME2/ S	DS-KD8003Y-IME2/ NS
				
DS-KD8003Y-IME2	DS-KD8003-IME1(B)/Flush	DS-KD8003-IME1(B)/Surface	DS-KD8003-IME1(B)/S	DS-KD8003-IME1(B)
				
DS-KD8003-IME1(B)/NS	DS-KD7003EY-IME2			
				

See Far, Go Further



www.hikvision.com
support@hikvision.com

