

DS-2ZMN0409S

Hikvision DS-2ZMN0409S 4MP ICR Day/Night Network Zoom Camera Module adopts a Sony IMX222 4MP CMOS sensor chip. With the 4 × optical zoom lens, the camera module offers more details over



- 4MP 1/1.8" progressive scan CMOS
- Up to 2560×1440 resolution
- 4 × optical zoom; focal length 2.8 mm to 12 mm
- Min. illumination: color: 0.005Lux @(F1.6, AGC ON), B/W: 0.0005Lux @(F1.6, AGC ON)
- Zoom speed: 1.7 s
- IR cut filter with auto switch
- 3D DNR, low bit rate, digital WDR
- Small size and low power consumption
- Easy to connect to speed domes and PTZ cameras

▪ Specification

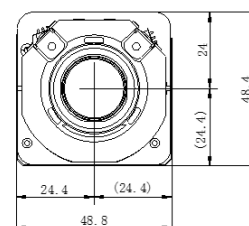
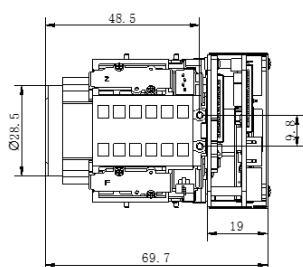
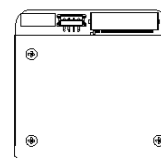
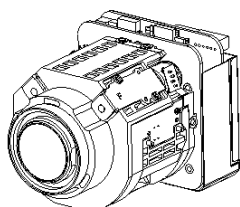
Camera Module	
Image Sensor	1/1.8" progressive scan CMOS
Min. Illumination	color: 0.005Lux @ (F1.6, AGC ON); B/W: 0.0005Lux @ (F1.6, AGC ON)
Resolution and Frame Rate	main stream: 50Hz: 25fps (2560×1440, 1920×1080, 1280×960, 1280×720); 60Hz: 30fps (2560×1440, 1920×1080, 1280×960, 1280×720); sub-stream: 50Hz: 25fps (704×576, 640×480, 352×288); 60Hz: 30fps (704×480, 640×480, 352×240)
Video Compression	H.264, H.265
Audio Compression	G.722.1, G.711-a law, G.711-u law, MP2L2, G.726, PCM
White Balance	manual, auto 1, auto 2, sodium lamp, indoor, outdoor, fluorescent lamp
Gain Control	auto, manual
SNR	> 52dB
3D DNR	yes
BLC	yes
Regional Focus	yes
Shutter	1/1s to 1/30,000s
Day & Night	Auto/Color/BW/Scheduled-Switch/Triggered by Alarm Input
Digital Zoom	12 ×
Focus	auto, semi-auto, manual
Regional Exposure	yes
Video Bit Rate	32Kbps to 16Mbps
Heartbeat	yes
Day/Night Switch	IR Cut Filter
Exposure Mode	auto, iris priority, shutter priority, manual
Lens	
Focal Length	2.8 mm to 12 mm, 4 × optical
Zoom Speed	approx. 1.7 s (optical, wide-tele)
Aperture	F1.6 to F2.7
FOV	Horizontal field of view: 107.4° to 39.8°, vertical field of view: 55.7° to 21.8°, diagonal field of view: 131.4° to 44.6°
Function	
Image Enhancement	WDR, HLC
Smart Encoding	low bit rate, ROI
Exception Detection	illegal login
Power-off Memory	yes
Smart Detection	motion detection, video tampering detection, audio exception detection, intrusion detection, line crossing detection
Network	
Protocols	IPv4/IPv6, HTTP, HTTPS, 802.1x, Qos, FTP, SMTP, UPnP, DNS, DDNS, NTP, RTSP, RTP, TCP/IP, DHCP, Bonjour
API	open-ended, support ONVIF and ISAPI, support HIKVISION SDK and third-party management platform
Web Browser	IE 8 to 11, Chrome 31.0+, Firefox 30.0+, Safari 11+
Simultaneous Live View	up to 20 channels
User	up to 32 users; 3 levels: administrator, operator, and user

Security Measures	user authentication (ID and PW); host authentication (MAC address); HTTPS encryption; IEEE 802.1x port-based network access control
Interface	
Power Interface	DC12V ±10%
Communication Interface	10 M/100 M ethernet interface
Audio I/O	1-ch audio input and 1-ch audio output
Alarm I/O	1-ch alarm input and 1-ch alarm output
Video Output	no
SDI Output	no
RS-485	yes
On-board Storage	yes (no on-board MicroSD card socket)
Interface	36pin FFC (including network interface, RS485, RS232, SDHC, alarm in/out, line in/out, power supply)
Communication	RS232 interface, HIKVISION protocol, RS485 interface, Pelco protocol
General	
Power Consumption	static: 2.5W; dynamic: 4.5W
Operating Conditions	temperature: -10 °C to 60 °C (14°F to 140°F); humidity: < 90%
Dimensions	49 mm×48 mm×70 mm
Weight	170g

▪ Available Model

DS-2ZMN0409S

▪ Dimension



See Far, Go Further



www.hikvision.com
support@hikvision.com

