

## DS-1696ZJ-X

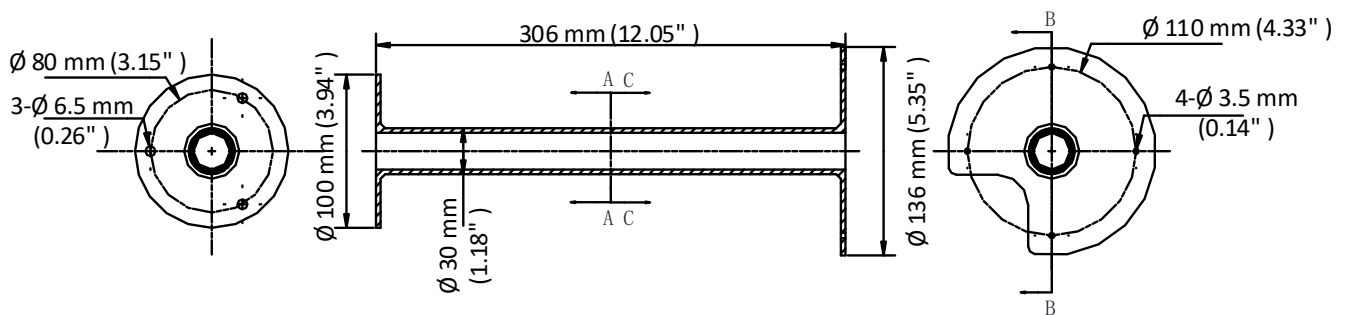
### Pendant Mount



#### Feature

- Stainless steel 316L with surface spray treatment
- Cable hole design facilitates the installation
- Applies to both indoor conditions and outdoor conditions

#### Dimension



#### Available Model

DS-1696ZJ-X

#### Parameter

Model	DS-1696ZJ-X
Parameters	Pendant Mount
Appearance	Natural Stainless Steel Color
Material	Stainless steel 316L
Dimension	$\varnothing 136 \text{ mm} \times 306 \text{ mm}$ ( $\varnothing 5.35" \times 12.05"$ )
Weight	1072 g (2.36 lb.)

#### Note

- The mount should be installed on the flat surface.
- The waterproof rubber is necessary for the outdoor application.
- The wall must be capable of supporting at least 3 times as much as the total weight of the camera, and the mount.
- The mount's maximum load capacity is 15 kg (33 lb.).

0100001080515