

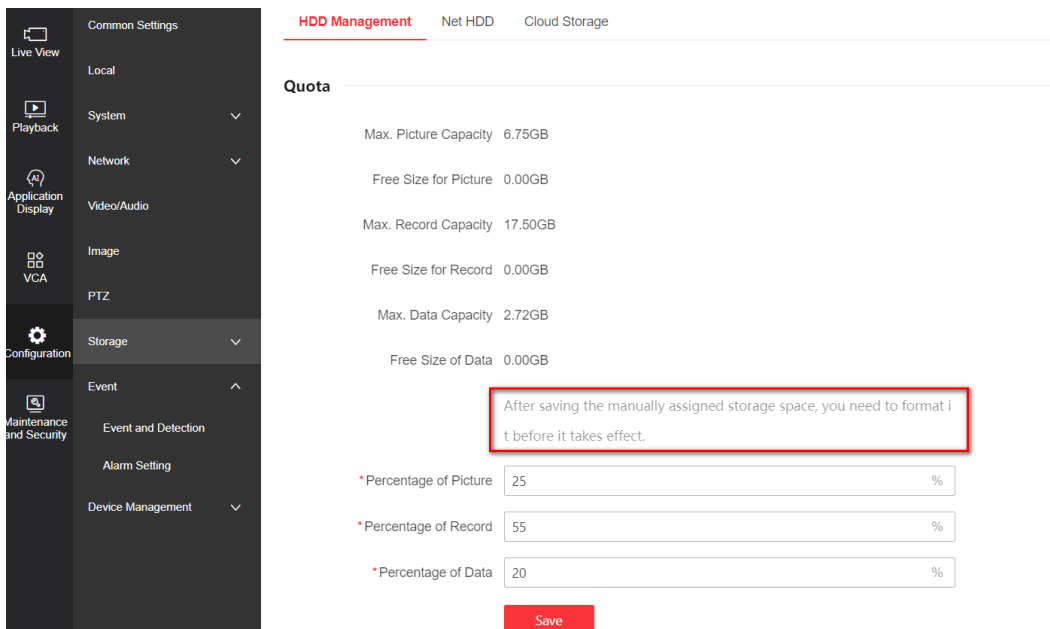
DeepinView Camera V5.9.23 Release Note

<p style="text-align: center;">Firmware Basic Information</p>	<p style="text-align: center;">Firmware Version</p>	<p>Multi-Intelligence Models: IPCG_OS_V5.9.23_251223 IPCG_OS_V5.9.23_260310 IPCG_OS_V5.9.23_260407</p> <p>ANPR Models: IPCG_SAP_V5.9.23_251223 IPCG_SAP_V5.9.23_260310 IPCG_SAP_V5.9.23_260326 IPCG_SAP_V5.9.23_260407</p>
---	---	--

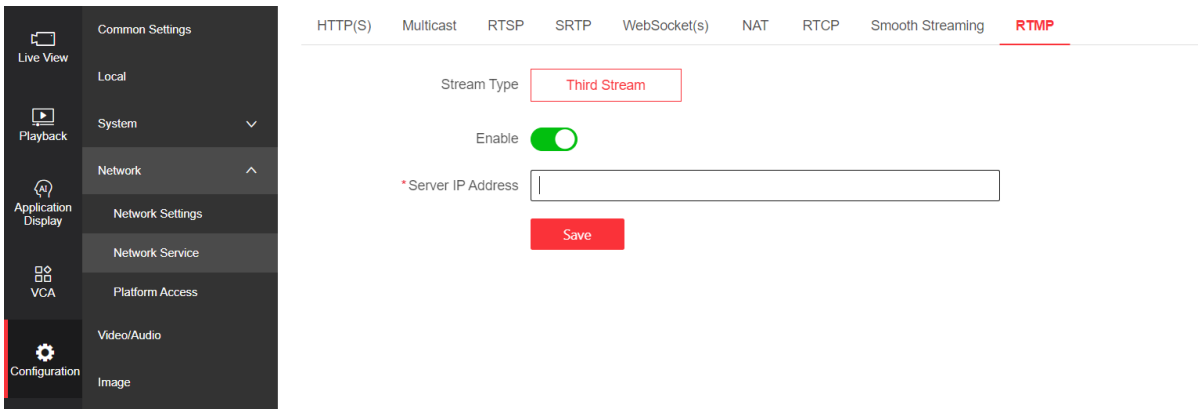
■ New Features

[General Function]

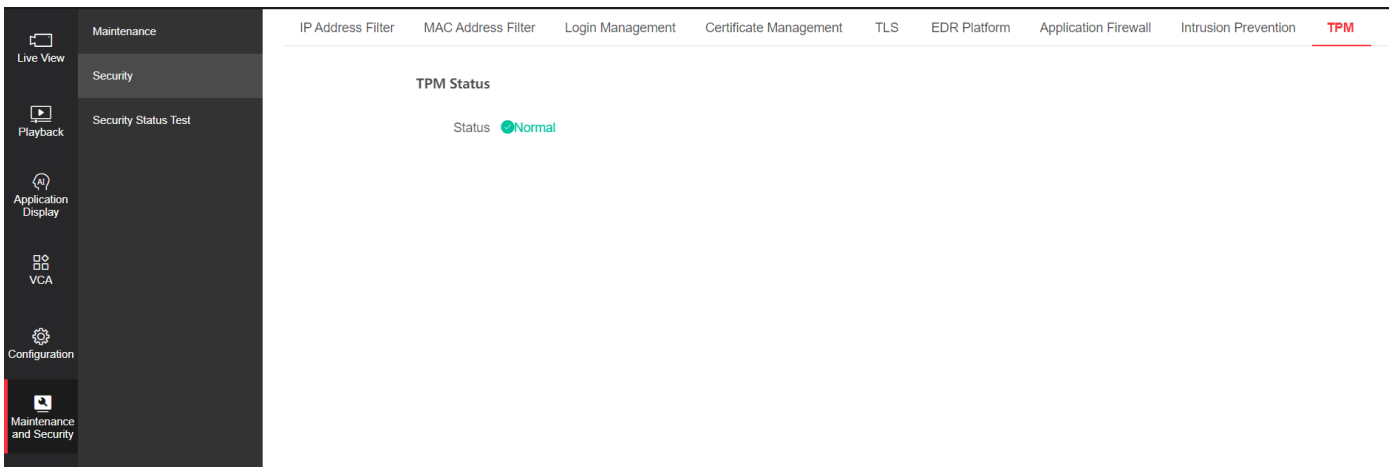
1. Newly released 16MP model: iDS-2CD7X166G2.
2. Newly support Hik-Connect cloud storage function, support event recording and continuous recording.
3. The storage page added a prompt message indicating that formatting is required after modifying the storage quota.



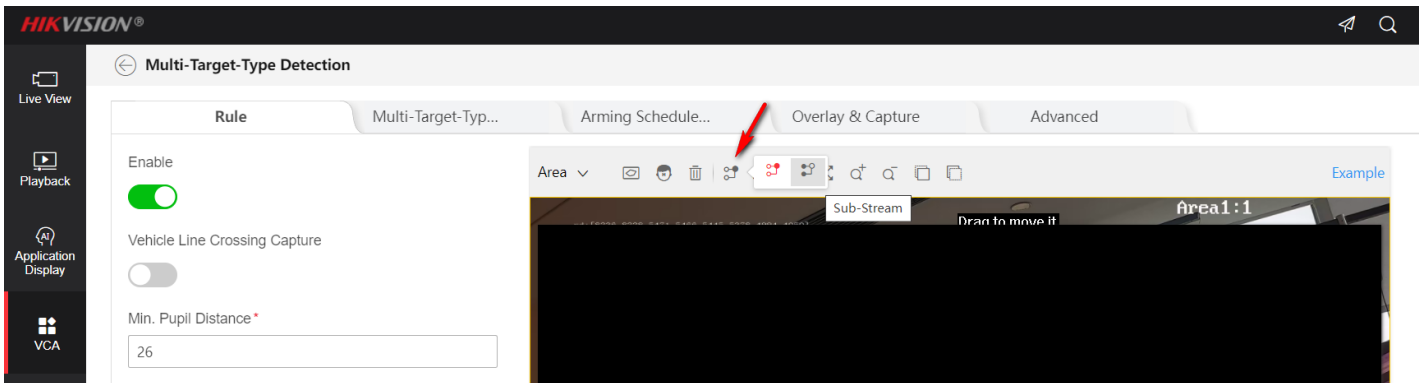
4. Support RTMP.



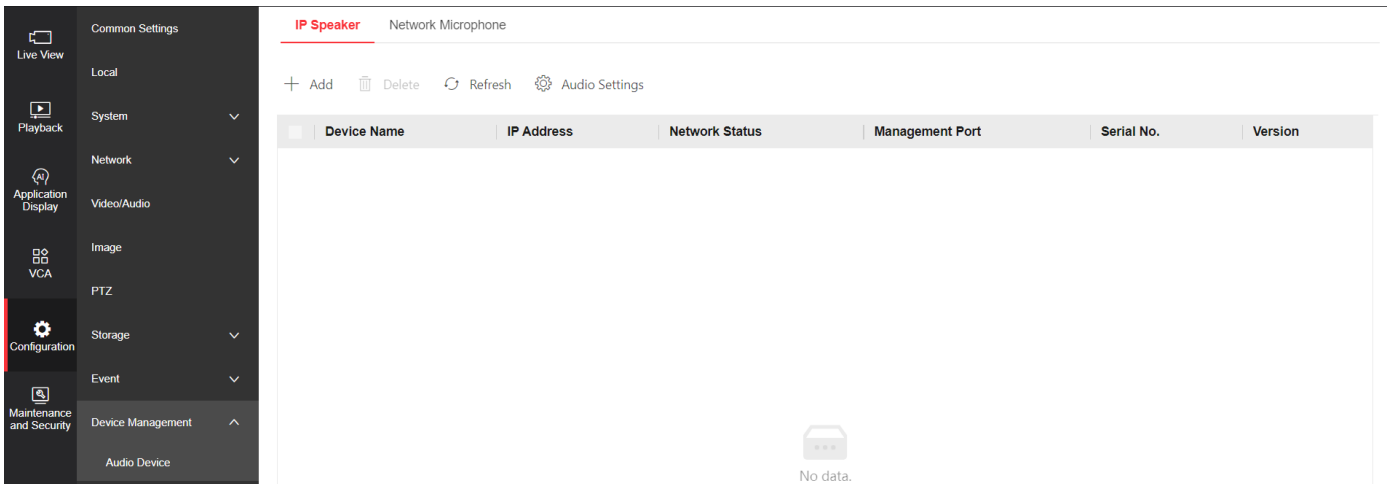
5. Support TPM status display.



6. Support switch to sub-stream on VCA- rule configuration page.



7. Support add network microphone and IP speaker.

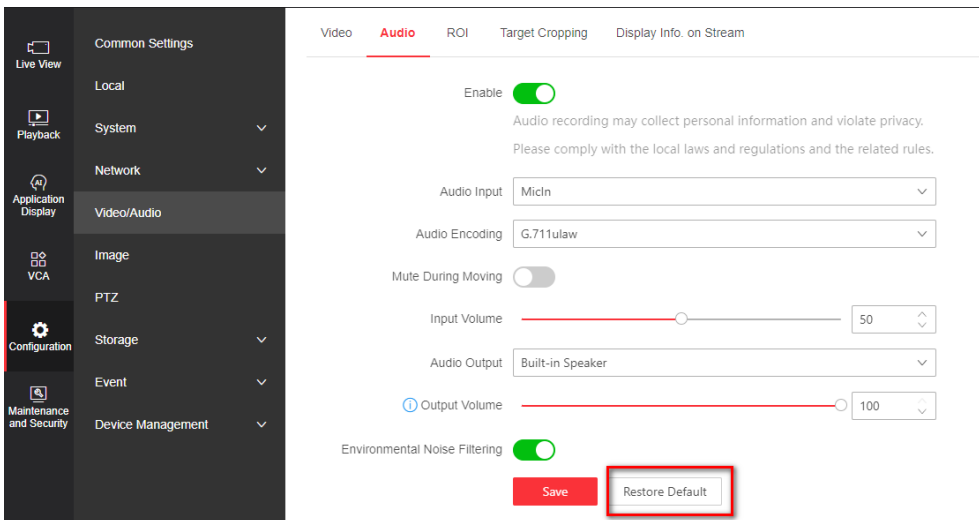


8. The event recording of the camera-side perimeter event supports marking human and vehicle in the video, facilitating identification and backup of event video clips at the central.
9. After enabling dynamic mosaic, the maximum resolution of the restored stream is increased to match the resolution of the main stream, and the frame rate of the original stream is reduced.

See the table below for details.

Device Resolution	Resolution of the restore stream	Frame rate of the restore stream	Default frame rate of the original stream	Frame rate of the original stream (After enabling mosaic)
4MP	2688×1520	P: 25fps N: 30fps	P: 25fps N: 30fps	P: 25fps N: 30fps
8MP	3840×2160	P: 25fps N: 24fps	P: 25fps N: 30fps	P: 25fps N: 30fps
12MP	4608×2592	P: 20fps N: 20fps	P: 25fps N: 30fps	P: 20fps N: 20fps
16MP	4608×3456	P: 15fps N: 15fps	P: 25fps N: 30fps	P: 15fps N: 15fps

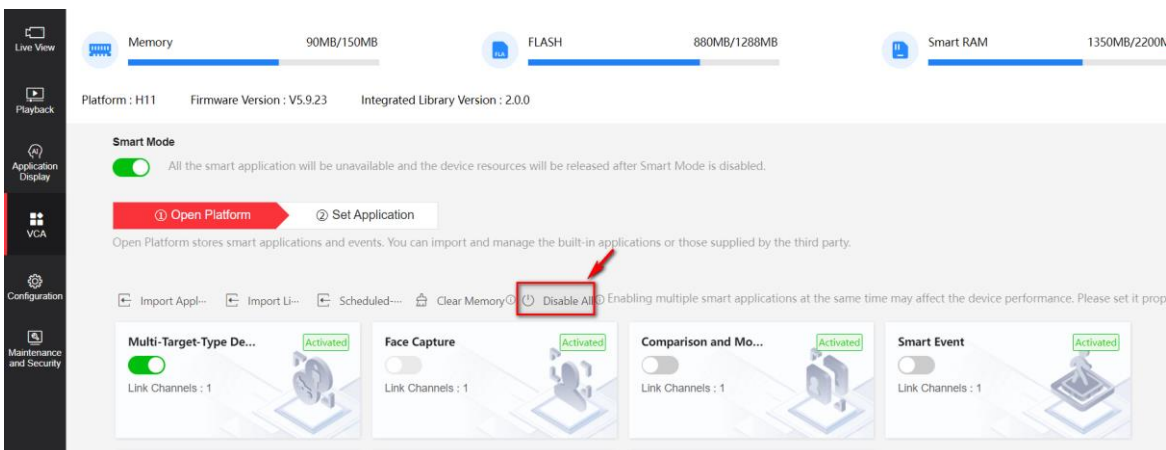
10. Add a restore default button in the audio interface.



11. The email address length is extended to 64 bits.

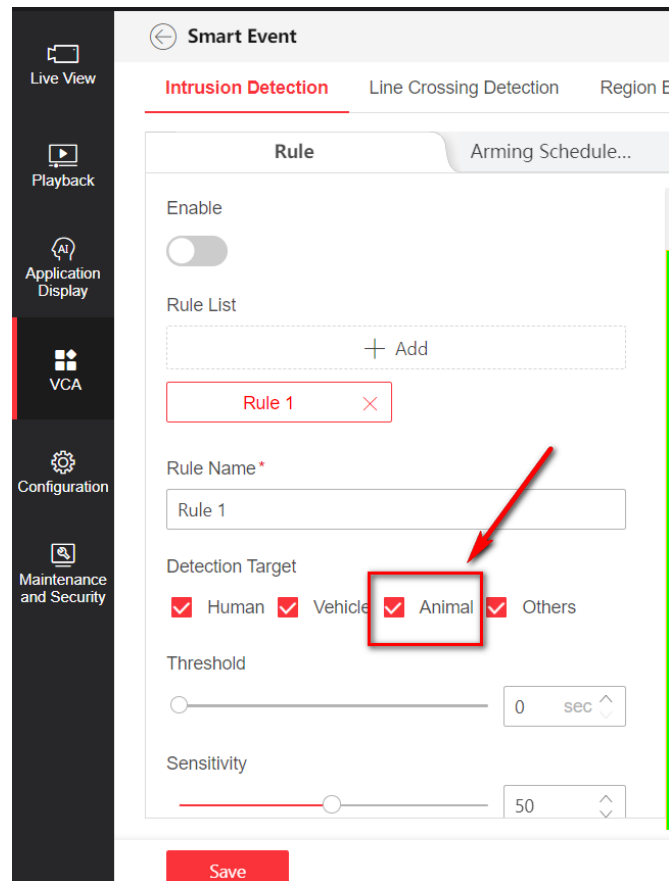
[VCA]

1. Support one-click to turn off all VCA resource.



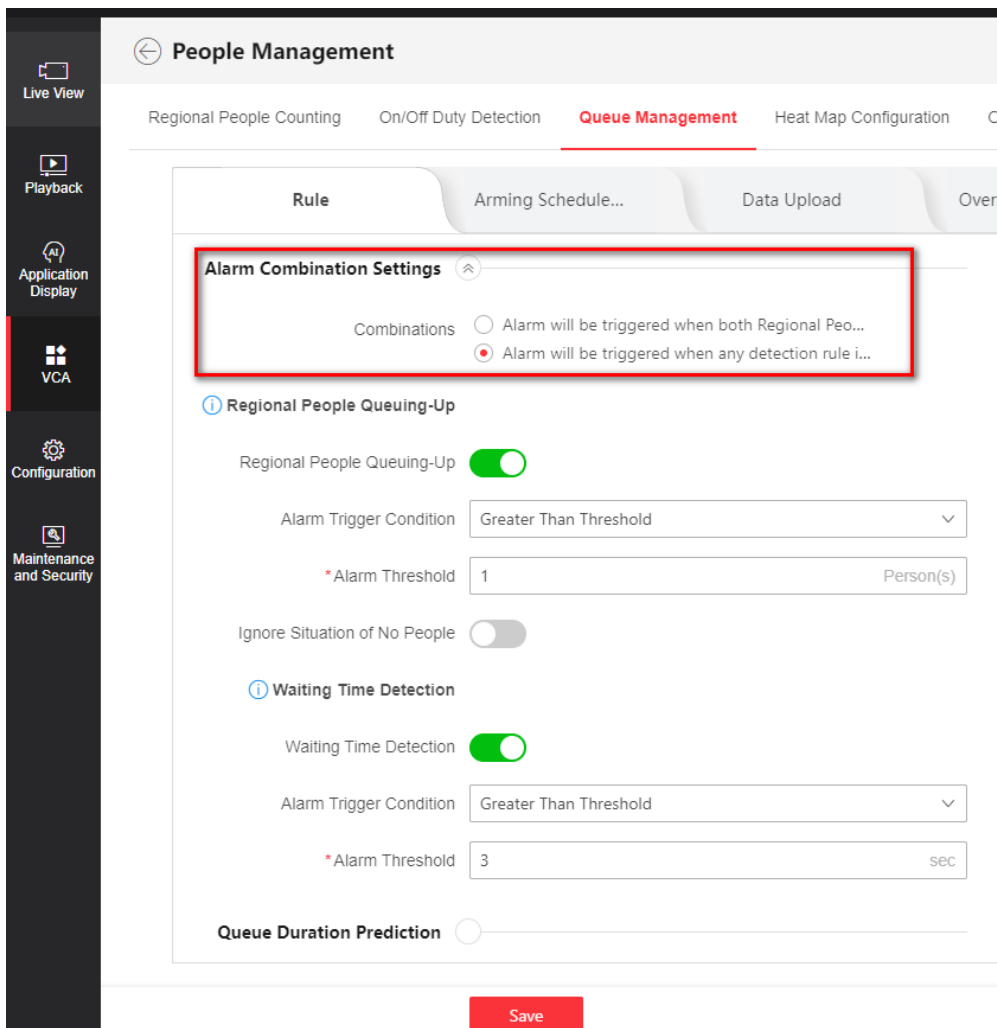
2. Smart event support animal detection.

3. Support acuseek2.0, support face, license plate number, human body, vehicle, non-motorized vehicle, and animal target + attribute information upload.

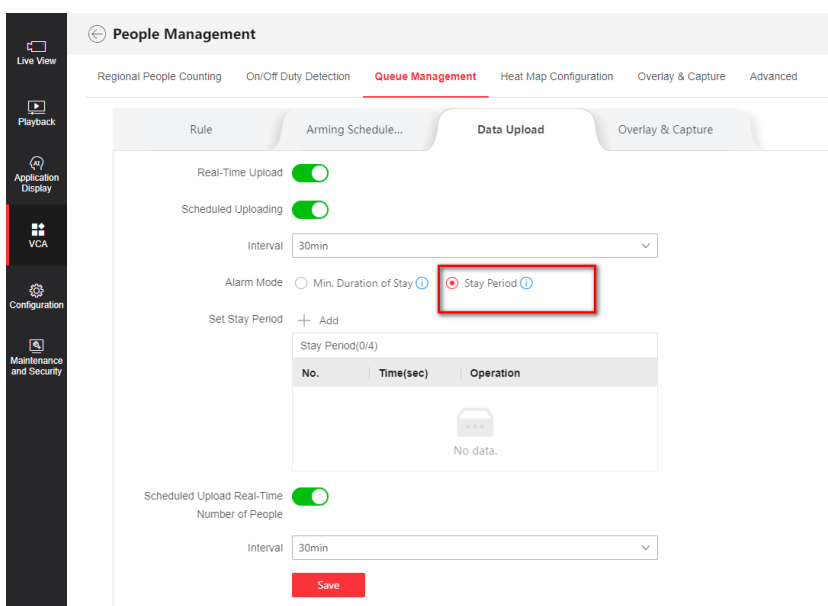


[IPCG_OS] Multi-Intelligence Models

1. **[People management]** Queue management supports regional people queuing-up and waiting time detect combined alarm settings.
Supports two combination modes: alarm will be triggered when both rules are satisfied, and alarm will be triggered when any rule is satisfied.

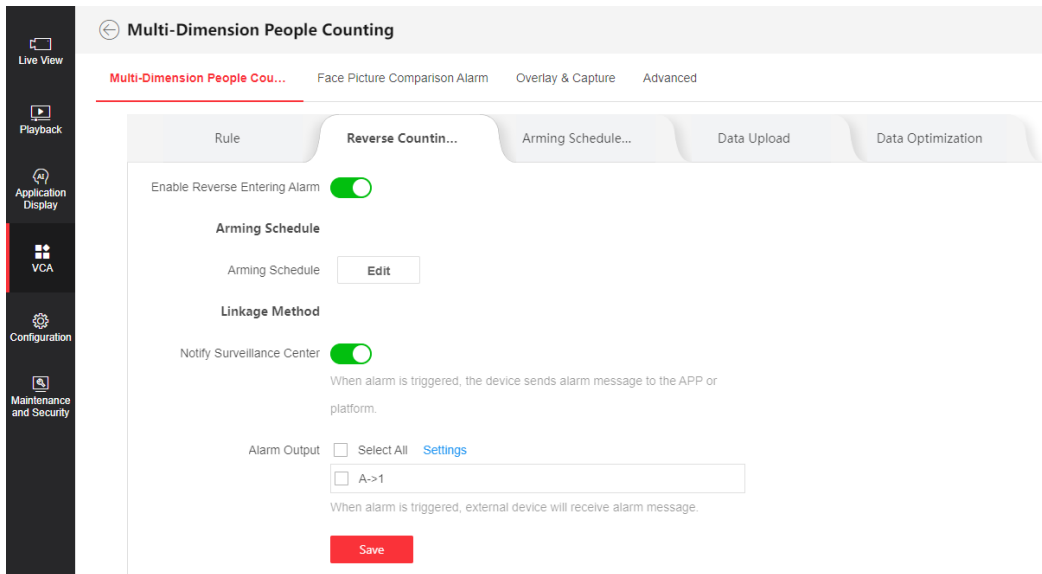


2. **[People management]** Queue management supports scheduled data upload according to the stay period.

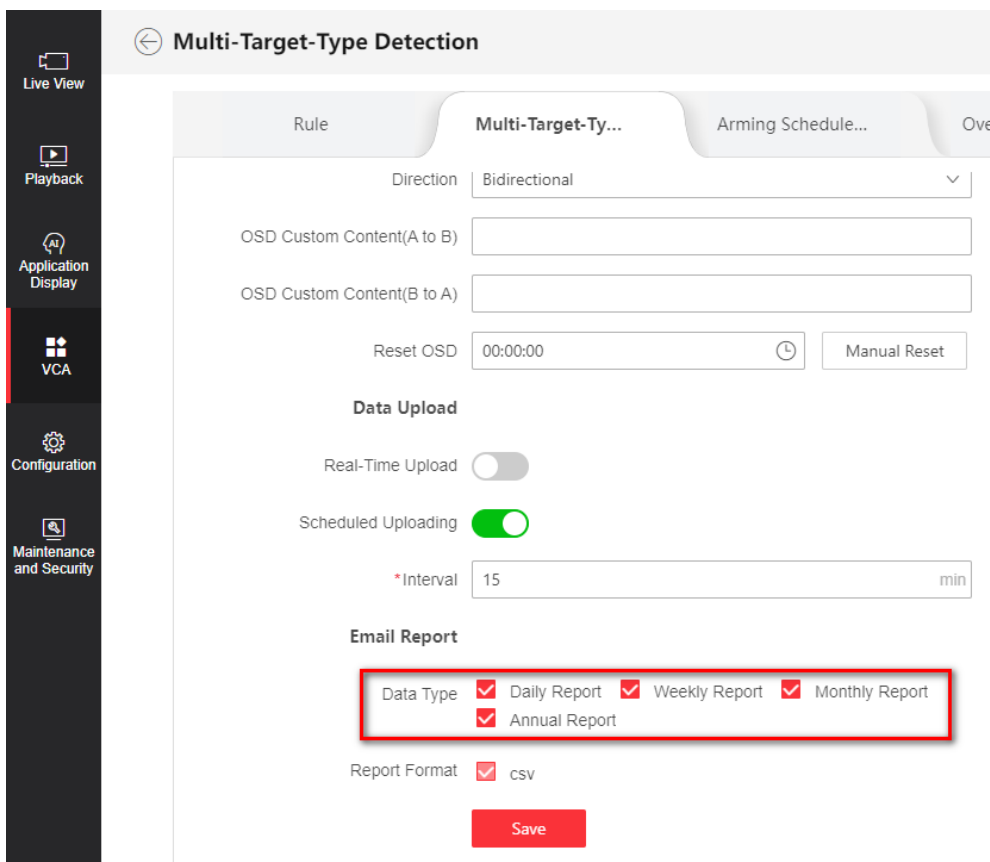


3. **[Multi-Dimension People Counting]** The multi-dimension people counting categorizes attributes without detected faces as unknown.

4. **[Multi-Dimension People Counting]** Multi-dimension people counting supports reverse entering alarm.



5. **[Multi-Target-Type detection]** The multi-target type counting email report will be pushed once daily, weekly, monthly, and yearly according to the actual configuration frequency, solving the issue of frequent daily pushes.

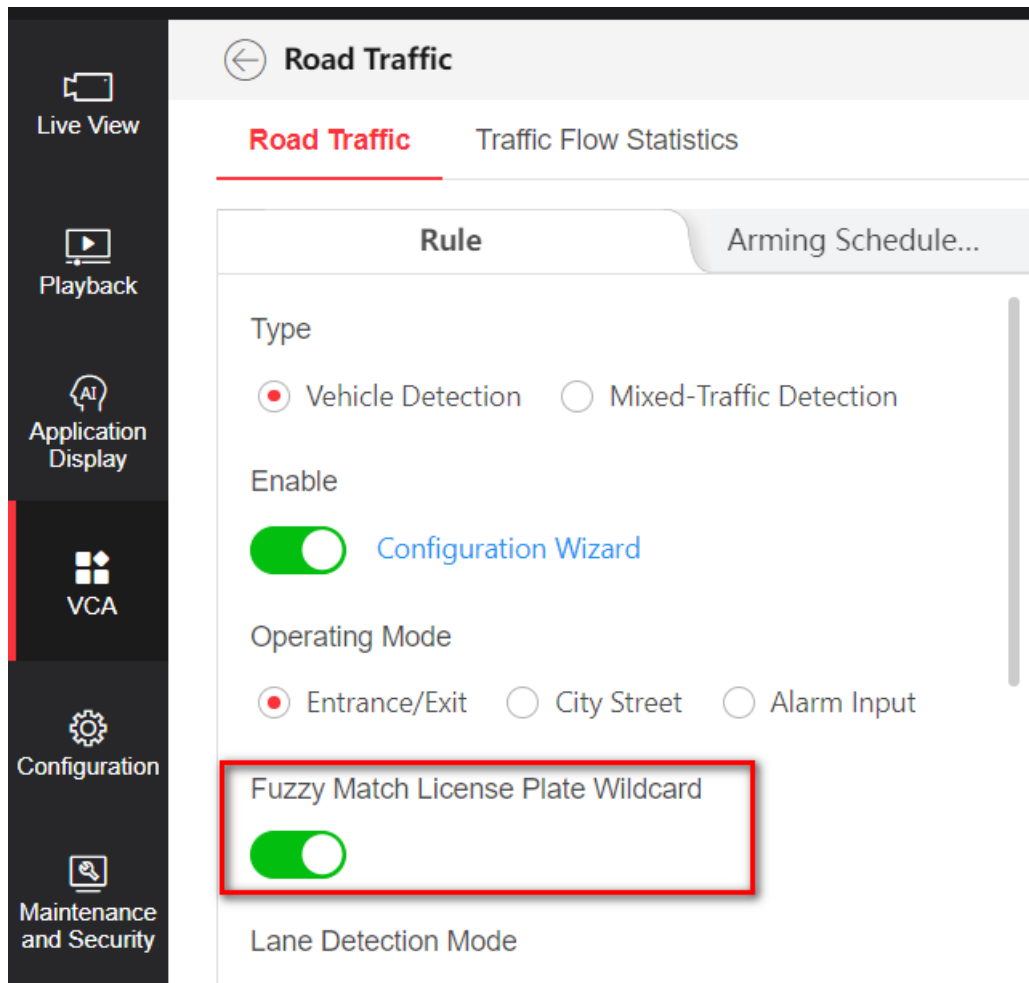


[IPCG_SAP]ANPR Models:

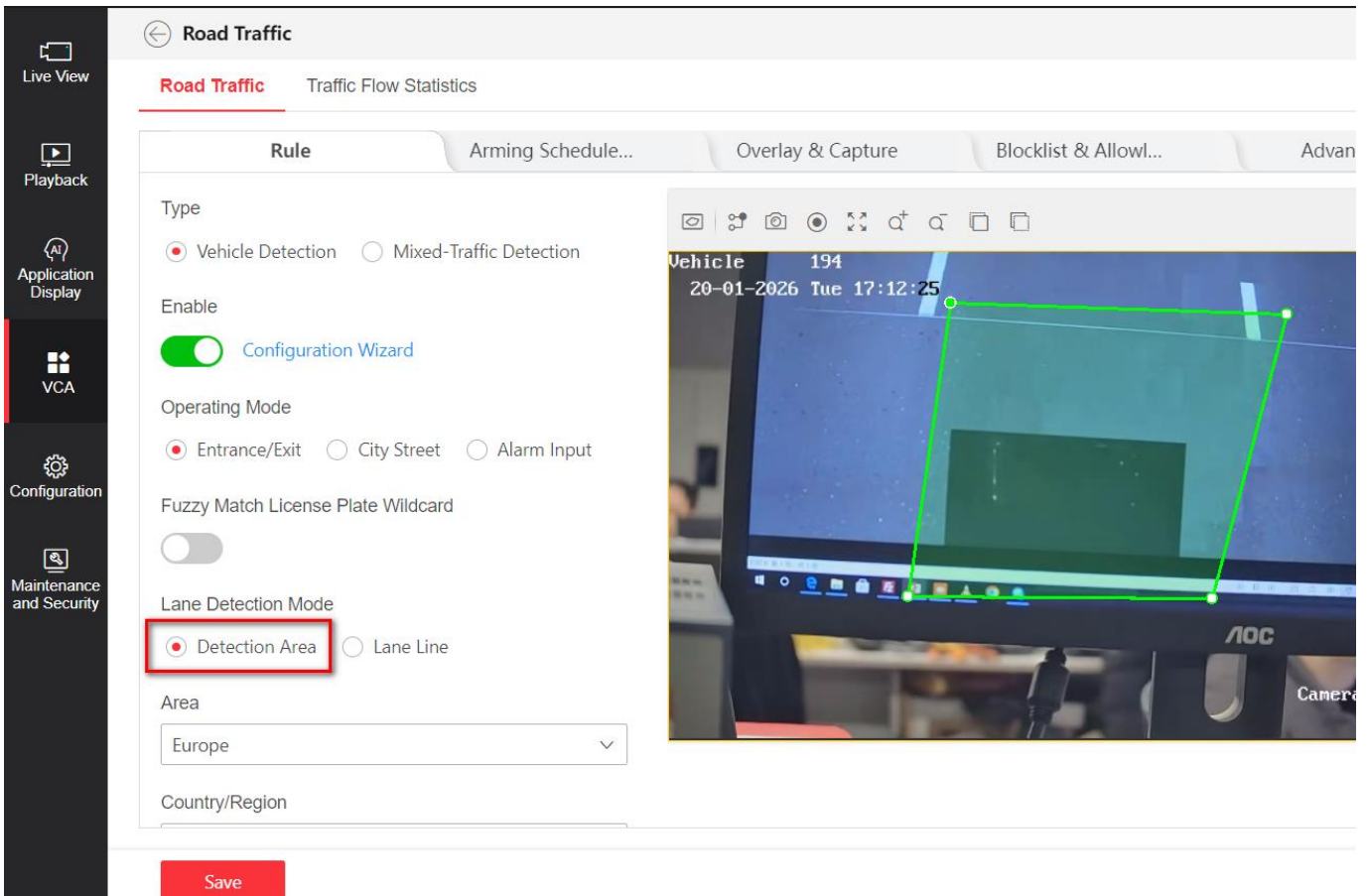
1. **[Road Traffic]** Add country/region, vehicle type, vehicle brand, and vehicle color information

overlay in the ANPR background image text and in FTP file naming.

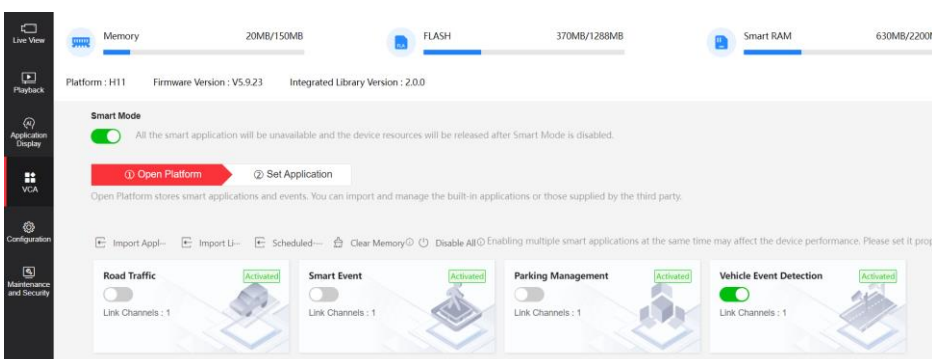
2. **[Road Traffic]** Support fuzzy match license plate wildcard function. Support importing license plates starting with specific characters in the allowlist & blocklist. When a license plate number of *xxx* is imported into the allowlist & blocklist, and enable fuzzy match license plate wildcard function, all license plates starting with xxx can successfully match with allowlist & blocklist and trigger the alarm linkage.

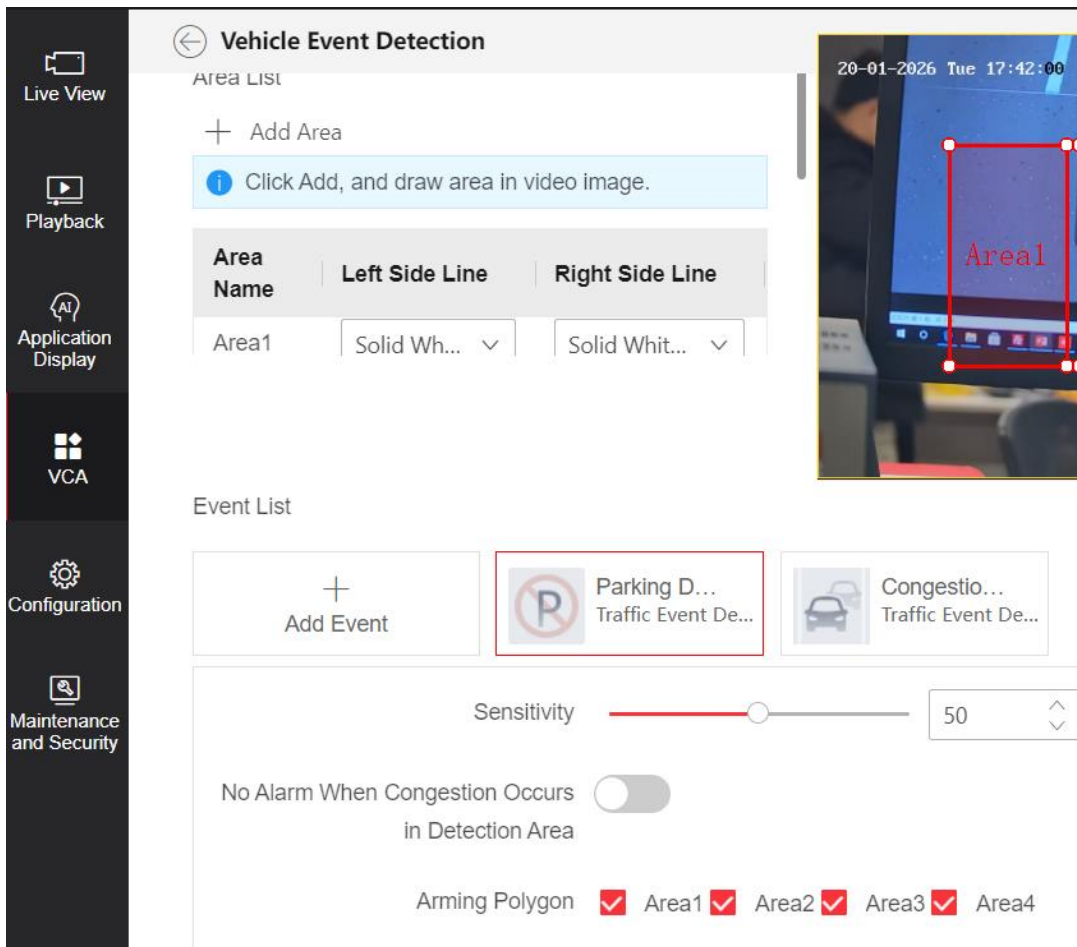


3. **[Road Traffic]** Support configure a detection area instead of configure lane lines



4. **[Road Traffic]** The license plate blocklist and allowlist supports a maximum of 50000 license plates.
5. **[Road Traffic]** Integrated new algorithm to support license plate re-detection during reverse driving.
6. **[Road Traffic]** Baseline version supports Hong Kong and Macau license plate number recognition.
7. **[Road Traffic]** The date format of the ANPR image overlay is consistent with the date format configured in the OSD.
8. **[Vehicle Event Detection]** Newly add Vehicle Event Detection VCA resource, which supports parking detection and congestion detection.





■ Modify Features

V5.9.23_260310:

1. Fix some known issues of 75xxG2 PTRZ control.
2. Fix some known bugs.

V5.9.23_260326:

Fix some known bugs.

V5.9.23_2600407:

1. Fix some known issues and improve system stability.
2. Fix flickering screen issue on 12/16MP model at 4000×3000 resolution.
3. Fix some known issues of 75xxG2 PTRZ control.

Customer Impact and Recommended Action

This update refers to function/compatibility improvement and will take effect automatically after the Date of Change.

We are very sorry for any inconvenience of use-habit changes caused by this action.

For any questions and request for this firmware, please contact our local technical support team.

Remarks:

- Hikvision reserves the right to change, alter or withdraw the above notification without prior notice.
- Product design and specifications are subject to change without prior notice.
- The Hikvision firmware may contain errors known as errata which may cause the product to deviate from published specifications. Current characterized errata are available on request.
- Hikvision is not liable for any typing or printing errors.

Hikvision Digital Technology CO., Ltd.
 No. 555 Qianmo Road, Binjiang District, Hangzhou 310051, China
 Tel: +86-571-8807-5998
 FAX: +86-571-8993-5635
 Email: overseabusiness@hikvision.com

Supported Models	
[IPCG_OS]	
Product series	Product Models
IPC 7 Series	iDS-2CD7126G2-IZHSY(2.8-12mm)(0-STD)
IPC 7 Series	iDS-2CD7126G2-IZHSY(2.8-12mm)(0-NEU)
IPC 7 Series	iDS-2CD7146G2-IZHSY(1T)(8-32mm)(0-STD)
IPC 7 Series	iDS-2CD7146G2-IZHSY(1T)(8-32mm)(0-NEU)
IPC 7 Series	iDS-2CD7026G2-AP(0-STD)
IPC 7 Series	iDS-2CD7046G2-AP(0-STD)
IPC 7 Series	iDS-2CD7046G2-AP(0-STD)(Unpack)
IPC 7 Series	iDS-2CD7186G2-IZHSY(2.8-12mm)(0-STD)
IPC 7 Series	iDS-2CD7186G2-IZHSY(2.8-12mm)(0-NEU)
IPC 7 Series	iDS-2CD7186G2-IZHSY(8-32mm)(0-STD)
IPC 7 Series	iDS-2CD7186G2-IZHSY(8-32mm)(0-NEU)
IPC 7 Series	iDS-2CD71C6G2-IZHSY(2.8-12mm)(0-STD)

IPC 7 Series	iDS-2CD71C6G2-IZHSY(2.8-12mm)(0-NEU)
IPC 7 Series	iDS-2CD71C6G2-IZHSY(8-32mm)(0-STD)
IPC 7 Series	iDS-2CD71C6G2-IZHSY(8-32mm)(0-NEU)
IPC 7 Series	iDS-2CD7A46G2-IZHSY(1T)(2.8-12mm)(0-STD)
IPC 7 Series	iDS-2CD7A26G2-IZHSY(8-32mm)(0-STD)
IPC 7 Series	iDS-2CD7A46G2-IZHS(1T)(2.8-12mm)(0-STD)
IPC 7 Series	iDS-2CD7A86G2-IZHSY(2.8-12mm)(0-STD)
IPC 7 Series	iDS-2CD7AC6G2-IZHSY(8-32mm)(0-STD)
IPC 7 Series	iDS-2CD7A86G2-IZHS(2.8-12mm)(0-STD)
IPC 7 Series	iDS-2CD7AC6G2-IZHS(8-32mm)(0-STD)
IPC 7 Series	iDS-2CD7126G2-IZS(2.8-12mm)(0-STD)
IPC 7 Series	iDS-2CD7126G2-IZS(2.8-12mm)(0-NEU)
IPC 7 Series	iDS-2CD7126G2-IZS(8-32mm)(0-STD)
IPC 7 Series	iDS-2CD7126G2-IZS(8-32mm)(0-NEU)
IPC 7 Series	iDS-2CD7126G2-IZHSY(8-32mm)(0-STD)
IPC 7 Series	iDS-2CD7126G2-IZHSY(8-32mm)(0-NEU)
IPC 7 Series	iDS-2CD7146G2-IZS(1T)(8-32mm)(0-STD)
IPC 7 Series	iDS-2CD7146G2-IZS(1T)(8-32mm)(0-NEU)
IPC 7 Series	iDS-2CD7146G2-IZS(1T)(2.8-12mm)(0-STD)
IPC 7 Series	iDS-2CD7146G2-IZS(1T)(2.8-12mm)(0-NEU)
IPC 7 Series	iDS-2CD7146G2-IZHSY(1T)(2.8-12mm)(0-STD)
IPC 7 Series	iDS-2CD7146G2-IZHSY(1T)(2.8-12mm)(0-NEU)
IPC 7 Series	iDS-2CD7A86G2-IZHSY(8-32mm)(0-STD)
IPC 7 Series	iDS-2CD7A46G2-IZHSY(2.8-12mm)(0-STD)
IPC 7 Series	iDS-2CD7A26G2-IZHSY(2.8-12mm)(0-STD)
IPC 7 Series	iDS-2CD7A46G2-IZHSY(8-32mm)(0-STD)
IPC 7 Series	iDS-2CD7A46G2-IZHSY(1T)(8-32mm)(0-STD)
IPC 7 Series	iDS-2CD7A26G2-IZHS(2.8-12mm)(0-STD)

IPC 7 Series	iDS-2CD7A46G2-IZHS(2.8-12mm)(0-STD)
IPC 7 Series	iDS-2CD7A26G2-IZHS(8-32mm)(0-STD)
IPC 7 Series	iDS-2CD7A46G2-IZHS(8-32mm)(0-STD)
IPC 7 Series	iDS-2CD7A46G2-IZHS(1T)(8-32mm)(0-STD)
IPC 7 Series	iDS-2CD7026G2-AP(0-NEU)
IPC 7 Series	iDS-2CD7046G2-AP(0-NEU)
IPC 7 Series	iDS-2CD7046G2-AP(0-NEU)(Unpack)
IPC 7 Series	iDS-2CD7A86G2-IZHS(8-32mm)(0-STD)
IPC 7 Series	iDS-2CD7A26G2-IZHSY(2.8-12mm)(0-NEU)
IPC 7 Series	iDS-2CD7A26G2-IZHSY(8-32mm)(0-NEU)
IPC 7 Series	iDS-2CD7A46G2-IZHSY(1T)(2.8-12mm)(0-NEU)
IPC 7 Series	iDS-2CD7A46G2-IZHSY(1T)(8-32mm)(0-NEU)
IPC 7 Series	iDS-2CD7A46G2-IZHSY(2.8-12mm)(0-NEU)
IPC 7 Series	iDS-2CD7A46G2-IZHSY(8-32mm)(0-NEU)
IPC 7 Series	iDS-2CD7A86G2-IZHSY(2.8-12mm)(0-NEU)
IPC 7 Series	iDS-2CD7A86G2-IZHSY(8-32mm)(0-NEU)
IPC 7 Series	iDS-2CD7A26G2-IZHS(2.8-12mm)(0-NEU)
IPC 7 Series	iDS-2CD7A26G2-IZHS(8-32mm)(0-NEU)
IPC 7 Series	iDS-2CD7A46G2-IZHS(2.8-12mm)(0-NEU)
IPC 7 Series	iDS-2CD7A46G2-IZHS(8-32mm)(0-NEU)
IPC 7 Series	iDS-2CD7A46G2-IZHS(1T)(8-32mm)(0-NEU)
IPC 7 Series	iDS-2CD7A46G2-IZHS(1T)(2.8-12mm)(0-NEU)
IPC 7 Series	iDS-2CD7A86G2-IZHS(2.8-12mm)(0-NEU)
IPC 7 Series	iDS-2CD7A86G2-IZHS(8-32mm)(0-NEU)
IPC 7 Series	iDS-2CD7086G2-AP(0-STD)
IPC 7 Series	iDS-2CD7146G2-IZHSY(8-32mm)(0-STD)
IPC 7 Series	iDS-2CD7146G2-IZHSY(8-32mm)(0-NEU)
IPC 7 Series	iDS-2CD7146G2-IZS(8-32mm)(0-STD)

IPC 7 Series	iDS-2CD7146G2-IZS(8-32mm)(0-NEU)
IPC 7 Series	iDS-2CD7146G2-IZS(2.8-12mm)(0-STD)
IPC 7 Series	iDS-2CD7146G2-IZS(2.8-12mm)(0-NEU)
IPC 7 Series	iDS-2CD7146G2-IZHSY(2.8-12mm)(0-STD)
IPC 7 Series	iDS-2CD7146G2-IZHSY(2.8-12mm)(0-NEU)
IPC 7 Series	iDS-2CD7186G2-IZS(2.8-12mm)(0-STD)
IPC 7 Series	iDS-2CD7186G2-IZS(2.8-12mm)(0-NEU)
IPC 7 Series	iDS-2CD7186G2-IZS(8-32mm)(0-STD)
IPC 7 Series	iDS-2CD7186G2-IZS(8-32mm)(0-NEU)
IPC 7 Series	iDS-2CD7086G2-AP(0-NEU)
IPC 7 Series	iDS-2CD7A47G2-XZHSY(2.8-12mm)(0-STD)
IPC 7 Series	iDS-2CD7A87G2-XZHSY(2.8-12mm)(0-STD)
IPC 7 Series	iDS-2CD7A45G2-IZHSY(4.7-118mm)(0-STD)
IPC 7 Series	iDS-2CD7A47G2-XZHS(2.8-12mm)(0-STD)
IPC 7 Series	iDS-2CD7A87G2-XZHS(2.8-12mm)(0-STD)
IPC 7 Series	iDS-2CD7A45G2-IZHS(4.7-118mm)(0-STD)
IPC 7 Series	iDS-2CD7086G2-AP(0-STD)(Unpack)
IPC 7 Series	iDS-2CD7A46G2-IZHSY/5G(2.8-12mm)(0-STD)
IPC 7 Series	iDS-2CD7A46G2-IZHS/5G(2.8-12mm)(0-STD)
IPC 7 Series	iDS-2CD7A46G2-IZHSY/5G(8-32mm)(0-STD)
IPC 7 Series	iDS-2CD7A46G2-IZHS/5G(8-32mm)(0-STD)
IPC 7 Series	iDS-2CD7A86G2-IZHSY/5G(2.8-12mm)(0-STD)
IPC 7 Series	iDS-2CD7A86G2-IZHS/5G(2.8-12mm)(0-STD)
IPC 7 Series	iDS-2CD7A86G2-IZHSY/5G(8-32mm)(0-STD)
IPC 7 Series	iDS-2CD7A86G2-IZHS/5G(8-32mm)(0-STD)
IPC 7 Series	iDS-2CD7A46G2-IZHSY(6-132mm)(0-STD)
IPC 7 Series	iDS-2CD7A46G2-IZHS(6-132mm)(0-STD)
IPC 7 Series	iDS-2CD7586G2-XZHSY(2.8-12mm)(0-STD)

IPC 7 Series	iDS-2CD7546G2-XZHSY(8-32mm)(0-STD)
IPC 7 Series	iDS-2CD7586G2-XZHSY(8-32mm)(0-STD)
IPC 7 Series	iDS-2CD7546G2-XZHSY(2.8-12mm)(0-STD)
IPC 7 Series	iDS-2CD7A47G2-XZHSY(2.8-12mm)(0-NEU)
IPC 7 Series	iDS-2CD7A87G2-XZHSY(2.8-12mm)(0-NEU)
IPC 7 Series	iDS-2CD7A45G2-IZHSY(4.7-118mm)(0-NEU)
IPC 7 Series	iDS-2CD7A47G2-XZHS(2.8-12mm)(0-NEU)
IPC 7 Series	iDS-2CD7A87G2-XZHS(2.8-12mm)(0-NEU)
IPC 7 Series	iDS-2CD7A45G2-IZHS(4.7-118mm)(0-NEU)
IPC 7 Series	iDS-2CD7586G2-XZHS(2.8-12mm)(0-STD)
IPC 7 Series	iDS-2CD7086G2-AP(0-NEU)(Unpack)
IPC 7 Series	iDS-2CD7586G2-XZHSY(2.8-12mm)(0-NEU)
IPC 7 Series	iDS-2CD7546G2-XZHSY(8-32mm)(0-NEU)
IPC 7 Series	iDS-2CD7586G2-XZHSY(8-32mm)(0-NEU)
IPC 7 Series	iDS-2CD7546G2-XZHSY(2.8-12mm)(0-NEU)
IPC 7 Series	iDS-2CD7546G2-XZHS(8-32mm)(0-STD)
IPC 7 Series	iDS-2CD7586G2-XZHS(8-32mm)(0-STD)
IPC 7 Series	iDS-2CD7546G2-XZHS(2.8-12mm)(0-STD)
IPC 7 Series	iDS-2CD7586G2-XZHS(2.8-12mm)(0-STD)/Grey
IPC 7 Series	iDS-2CD7546G2-XZHS(8-32mm)(0-STD)/Grey
IPC 7 Series	iDS-2CD7586G2-XZHS(8-32mm)(0-STD)/Grey
IPC 7 Series	iDS-2CD7546G2-XZHS(2.8-12mm)(0-STD)/Grey
IPC 7 Series	iDS-2CD7586G2-XZHSY(2.8-12mm)(0-STD)/Grey
IPC 7 Series	iDS-2CD7546G2-XZHSY(8-32mm)(0-STD)/Grey
IPC 7 Series	iDS-2CD7586G2-XZHSY(8-32mm)(0-STD)/Grey
IPC 7 Series	iDS-2CD7546G2-XZHSY(2.8-12mm)(0-STD)/Grey
IPC 7 Series	iDS-2CD7586G2-XZHS(2.8-12mm)(0-NEU)
IPC 7 Series	iDS-2CD7546G2-XZHS(8-32mm)(0-NEU)

IPC 7 Series	iDS-2CD7586G2-XZHS(8-32mm)(0-NEU)
IPC 7 Series	iDS-2CD7546G2-XZHS(2.8-12mm)(0-NEU)
IPC 7 Series	iDS-2CD7A46G2-IZHSY/5G(2.8-12mm)(0-NEU)
IPC 7 Series	iDS-2CD7A46G2-IZHSY/5G(8-32mm)(0-NEU)
IPC 7 Series	iDS-2CD7A86G2-IZHSY/5G(2.8-12mm)(0-NEU)
IPC 7 Series	iDS-2CD7A86G2-IZHSY/5G(8-32mm)(0-NEU)
IPC 7 Series	iDS-2CD7A46G2-IZHSY(6-132mm)(0-NEU)
IPC 7 Series	iDS-2CD7A46G2-IZHS/5G(2.8-12mm)(0-NEU)
IPC 7 Series	iDS-2CD7A46G2-IZHS/5G(8-32mm)(0-NEU)
IPC 7 Series	iDS-2CD7A86G2-IZHS/5G(2.8-12mm)(0-NEU)
IPC 7 Series	iDS-2CD7A86G2-IZHS/5G(8-32mm)(0-NEU)
IPC 7 Series	iDS-2CD7A46G2-IZHS(6-132mm)(0-NEU)
IPC 7 Series	iDS-2CD7AC6G2-IZHSY(2.8-12mm)(0-STD)
IPC 7 Series	iDS-2CD7AC6G2-IZHS(2.8-12mm)(0-STD)
IPC 7 Series	iDS-2CD70C6G2-AP(0-STD)
IPC 7 Series	iDS-2CD70C6G2-AP(0-STD)(Unpack)
IPC 7 Series	iDS-2CD71C6G2-IZS(2.8-12mm)(0-STD)
IPC 7 Series	iDS-2CD71C6G2-IZS(8-32mm)(0-STD)
IPC 7 Series	iDS-2CD71C6G2-IZS(2.8-12mm)(0-NEU)
IPC 7 Series	iDS-2CD71C6G2-IZS(8-32mm)(0-NEU)
IPC 7 Series	iDS-2CD7AC6G2-IZHSY(2.8-12mm)(0-NEU)
IPC 7 Series	iDS-2CD7AC6G2-IZHSY(8-32mm)(0-NEU)
IPC 7 Series	iDS-2CD7AC6G2-IZHS(2.8-12mm)(0-NEU)
IPC 7 Series	iDS-2CD7AC6G2-IZHS(8-32mm)(0-NEU)
IPC 7 Series	iDS-2CD70C6G2-AP(0-NEU)
IPC 7 Series	iDS-2CD70C6G2-AP(0-NEU)(Unpack)
IPC 7 Series	iDS-2CD7587G2-XZHSY(2.8-12mm)(0-STD)
IPC 7 Series	iDS-2CD7547G2-XZHSY(2.8-12mm)(0-STD)

IPC 7 Series	iDS-2CD7587G2-XZHS(2.8-12mm)(O-STD)
IPC 7 Series	iDS-2CD7547G2-XZHS(2.8-12mm)(O-STD)
IPC 7 Series	iDS-2CD7587G2-ZHS/RC(2.8-12mm)(O-STD)
IPC 7 Series	iDS-2CD7547G2-ZHS/RC(2.8-12mm)(O-STD)
IPC 7 Series	iDS-2CD7A46G2-IZHSY/4G(10-50mm)(B)(O-STD)
IPC 7 Series	iDS-2CD7A46G2-IZHSY/4G(2.8-12)(B)O-STD/LA
IPC 7 Series	iDS-2CD7A86G2-IZHSY/4G(8-32mm)(B)O-STD/LA
IPC 7 Series	iDS-2CD7A86G2-IZHSY/4G(2.8-12mm)(B)O-STD
IPC 7 Series	iDS-2CD7A46G2-IZHS/4G(2.8-12)(B)O-STD/LA
IPC 7 Series	iDS-2CD7A86G2-IZHS/4G(2.8-12)(B)O-STD/LA
IPC 7 Series	iDS-2CD7A86G2-IZHS/5G(10-50mm)(B)(O-STD)
IPC 7 Series	iDS-2CD7A86G2-IZHSY/5G(10-50mm)(B)(O-STD)
IPC 7 Series	iDS-2CD7A46G2-IZHSY/5G(2.8-12mm)(B)O-STD
IPC 7 Series	iDS-2CD7A46G2-IZHS/5G(10-50mm)(B)(O-STD)
IPC 7 Series	iDS-2CD7587G2-XZHSY(2.8-12mm)(eF)(O-STD)
IPC 7 Series	iDS-2CD7547G2-XZHSY(2.8-12mm)(eF)(O-STD)
IPC 7 Series	iDS-2CD7587G2-XZHS(2.8-12mm)(eF)(O-STD)
IPC 7 Series	iDS-2CD7547G2-XZHS(2.8-12mm)(eF)(O-STD)
IPC 7 Series	iDS-2CD7587G2-ZHS/RC(2.8-12mm)(eF)(O-STD)
IPC 7 Series	iDS-2CD7547G2-ZHS/RC(2.8-12mm)(eF)(O-STD)
IPC 7 Series	iDS-2CD7587G2-XZHSY(2.8-12mm)(O-NEU)
IPC 7 Series	iDS-2CD7547G2-XZHSY(2.8-12mm)(O-NEU)
IPC 7 Series	iDS-2CD7587G2-XZHS(2.8-12mm)(O-NEU)
IPC 7 Series	iDS-2CD7547G2-XZHS(2.8-12mm)(O-NEU)
IPC 7 Series	iDS-2CD7587G2-ZHS/RC(2.8-12mm)(O-NEU)
IPC 7 Series	iDS-2CD7547G2-ZHS/RC(2.8-12mm)(O-NEU)
IPC 7 Series	iDS-2CD7587G2-ZHS/RC(8-32mm)(O-STD)
IPC 7 Series	iDS-2CD7547G2-ZHS/RC(8-32mm)(O-STD)

IPC 7 Series	iDS-2CD7587G2-ZHS/RC(10-50mm)(0-STD)
IPC 7 Series	iDS-2CD7547G2-ZHS/RC(10-50mm)(0-STD)
IPC 7 Series	iDS-2CD7A46G2-IZHS/4G(2.8-12mm)(B)(0-STD)
IPC 7 Series	iDS-2CD7A46G2-IZHS/4G(8-32mm)(B)(0-STD)
IPC 7 Series	iDS-2CD7A46G2-IZHS/4G(10-50mm)(B)(0-STD)
IPC 7 Series	iDS-2CD7A46G2-IZHS/4G(8-32)(B)0-STD/LA
IPC 7 Series	iDS-2CD7A46G2-IZHS/4G(10-50)(B)0-STD/LA
IPC 7 Series	iDS-2CD7A46G2-IZHSY/4G(2.8-12mm)(B)0-STD
IPC 7 Series	iDS-2CD7A46G2-IZHSY/4G(8-32mm)(B)(0-STD)
IPC 7 Series	iDS-2CD7A46G2-IZHSY/4G(8-32)(B)0-STD/LA
IPC 7 Series	iDS-2CD7A46G2-IZHSY/4G(10-50)(B)0-STD/LA
IPC 7 Series	iDS-2CD7A46G2-IZHS/5G(2.8-12mm)(B)(0-STD)
IPC 7 Series	iDS-2CD7A46G2-IZHS/5G(8-32mm)(B)(0-STD)
IPC 7 Series	iDS-2CD7A46G2-IZHSY/5G(8-32mm)(B)(0-STD)
IPC 7 Series	iDS-2CD7A46G2-IZHSY/5G(10-50mm)(B)(0-STD)
IPC 7 Series	iDS-2CD7A86G2-IZHS/4G(2.8-12mm)(B)(0-STD)
IPC 7 Series	iDS-2CD7A86G2-IZHS/4G(8-32mm)(B)(0-STD)
IPC 7 Series	iDS-2CD7A86G2-IZHS/4G(10-50mm)(B)(0-STD)
IPC 7 Series	iDS-2CD7A86G2-IZHS/4G(8-32)(B)0-STD/LA
IPC 7 Series	iDS-2CD7A86G2-IZHS/4G(10-50)(B)0-STD/LA
IPC 7 Series	iDS-2CD7A86G2-IZHSY/4G(8-32mm)(B)(0-STD)
IPC 7 Series	iDS-2CD7A86G2-IZHSY/4G(10-50mm)(B)(0-STD)
IPC 7 Series	iDS-2CD7A86G2-IZHSY/4G(2.8-12)(B)0-STD/LA
IPC 7 Series	iDS-2CD7A86G2-IZHSY/4G(10-50)(B)0-STD/LA
IPC 7 Series	iDS-2CD7A86G2-IZHS/5G(2.8-12mm)(B)(0-STD)
IPC 7 Series	iDS-2CD7A86G2-IZHS/5G(8-32mm)(B)(0-STD)
IPC 7 Series	iDS-2CD7A86G2-IZHSY/5G(2.8-12mm)(B)0-STD
IPC 7 Series	iDS-2CD7A86G2-IZHSY/5G(8-32mm)(B)(0-STD)

IPC 7 Series	iDS-2CD7A46G2-IZHSY/4G(2.8-12mm)(B)0-NEU
IPC 7 Series	iDS-2CD70166G2-AP(0-STD)
IPC 7 Series	iDS-2CD70166G2-AP(0-STD)(Unpack)
IPC 7 Series	iDS-2CD71166G2-IZHSY(2.8-12mm)(0-STD)
IPC 7 Series	iDS-2CD71166G2-IZHSY(8-32mm)(0-STD)
IPC 7 Series	iDS-2CD7A166G2-IZHSY(2.8-12mm)(0-STD)
IPC 7 Series	iDS-2CD7A166G2-IZHSY(8-32mm)(0-STD)

Note: Models in red font are newly released models.

Supported Models	
[IPCG_SAP]	
Product series	Product Models
IPC 7 Series	iDS-2CD7A47G2/P-XZHSY(2.8-12mm)(0-STD)
IPC 7 Series	iDS-2CD7A87G2/P-XZHSY(2.8-12mm)(0-STD)
IPC 7 Series	iDS-2CD7A45G2/P-IZHSY(4.7-118mm)(0-STD)
IPC 7 Series	iDS-2CD7A46G2/P-IZHSY(2.8-12mm)(0-STD)
IPC 7 Series	iDS-2CD7A46G2/P-IZHSY(8-32mm)(0-STD)
IPC 7 Series	iDS-2CD7A86G2/P-IZHSY(2.8-12mm)(0-STD)
IPC 7 Series	iDS-2CD7A86G2/P-IZHSY(8-32mm)(0-STD)
IPC 7 Series	iDS-2CD7A47G2/P-XZHS(2.8-12mm)(0-STD)
IPC 7 Series	iDS-2CD7A87G2/P-XZHS(2.8-12mm)(0-STD)
IPC 7 Series	iDS-2CD7A45G2/P-IZHS(4.7-118mm)(0-STD)
IPC 7 Series	iDS-2CD7A46G2/P-IZHS(2.8-12mm)(0-STD)
IPC 7 Series	iDS-2CD7A46G2/P-IZHS(8-32mm)(0-STD)
IPC 7 Series	iDS-2CD7A86G2/P-IZHS(2.8-12mm)(0-STD)
IPC 7 Series	iDS-2CD7A86G2/P-IZHS(8-32mm)(0-STD)
IPC 7 Series	iDS-2CD7A46G2/P-IZHSY/5G(2.8-12mm)(0-STD)
IPC 7 Series	iDS-2CD7A46G2/P-IZHS/5G(2.8-12mm)(0-STD)

IPC 7 Series	iDS-2CD7A46G2/P-IZHSY/5G(8-32mm)(0-STD)
IPC 7 Series	iDS-2CD7A46G2/P-IZHS/5G(8-32mm)(0-STD)
IPC 7 Series	iDS-2CD7A86G2/P-IZHSY/5G(2.8-12mm)(0-STD)
IPC 7 Series	iDS-2CD7A86G2/P-IZHS/5G(2.8-12mm)(0-STD)
IPC 7 Series	iDS-2CD7A86G2/P-IZHSY/5G(8-32mm)(0-STD)
IPC 7 Series	iDS-2CD7A86G2/P-IZHS/5G(8-32mm)(0-STD)
IPC 7 Series	iDS-2CD7A46G2/P-IZHSY(6-132mm)(0-STD)
IPC 7 Series	iDS-2CD7A46G2/P-IZHS(6-132mm)(0-STD)
IPC 7 Series	iDS-2CD7546G2/P-XZHSY(2.8-12mm)(0-STD)
IPC 7 Series	iDS-2CD7586G2/P-XZHSY(8-32mm)(0-STD)
IPC 7 Series	iDS-2CD7586G2/P-XZHSY(2.8-12mm)(0-STD)
IPC 7 Series	iDS-2CD7546G2/P-XZHSY(8-32mm)(0-STD)
IPC 7 Series	iDS-2CD7A47G2/P-XZHSY(2.8-12mm)(0-NEU)
IPC 7 Series	iDS-2CD7A87G2/P-XZHSY(2.8-12mm)(0-NEU)
IPC 7 Series	iDS-2CD7A45G2/P-IZHSY(4.7-118mm)(0-NEU)
IPC 7 Series	iDS-2CD7A46G2/P-IZHSY(2.8-12mm)(0-NEU)
IPC 7 Series	iDS-2CD7A46G2/P-IZHSY(8-32mm)(0-NEU)
IPC 7 Series	iDS-2CD7A86G2/P-IZHSY(2.8-12mm)(0-NEU)
IPC 7 Series	iDS-2CD7A86G2/P-IZHSY(8-32mm)(0-NEU)
IPC 7 Series	iDS-2CD7A47G2/P-XZHS(2.8-12mm)(0-NEU)
IPC 7 Series	iDS-2CD7A87G2/P-XZHS(2.8-12mm)(0-NEU)
IPC 7 Series	iDS-2CD7A45G2/P-IZHS(4.7-118mm)(0-NEU)
IPC 7 Series	iDS-2CD7A46G2/P-IZHS(2.8-12mm)(0-NEU)
IPC 7 Series	iDS-2CD7A46G2/P-IZHS(8-32mm)(0-NEU)
IPC 7 Series	iDS-2CD7A86G2/P-IZHS(2.8-12mm)(0-NEU)
IPC 7 Series	iDS-2CD7A86G2/P-IZHS(8-32mm)(0-NEU)
IPC 7 Series	iDS-2CD7546G2/P-XZHSY(2.8-12mm)(0-NEU)
IPC 7 Series	iDS-2CD7586G2/P-XZHSY(8-32mm)(0-NEU)

IPC 7 Series	iDS-2CD7586G2/P-XZHSY(2.8-12mm)(0-NEU)
IPC 7 Series	iDS-2CD7546G2/P-XZHSY(8-32mm)(0-NEU)
IPC 7 Series	iDS-2CD7546G2/P-XZHS(2.8-12mm)(0-STD)
IPC 7 Series	iDS-2CD7586G2/P-XZHS(8-32mm)(0-STD)
IPC 7 Series	iDS-2CD7586G2/P-XZHS(2.8-12mm)(0-STD)
IPC 7 Series	iDS-2CD7546G2/P-XZHS(8-32mm)(0-STD)
IPC 7 Series	iDS-2CD7546G2/P-XZHS(2.8-12mm)(0-STD)/Grey
IPC 7 Series	iDS-2CD7586G2/P-XZHS(8-32mm)(0-STD)/Grey
IPC 7 Series	iDS-2CD7586G2/P-XZHS(2.8-12mm)(0-STD)/Grey
IPC 7 Series	iDS-2CD7546G2/P-XZHS(8-32mm)(0-STD)/Grey
IPC 7 Series	iDS-2CD7546G2/P-XZHSY(2.8-12mm)(0-STD)Grey
IPC 7 Series	iDS-2CD7586G2/P-XZHSY(8-32mm)(0-STD)/Grey
IPC 7 Series	iDS-2CD7586G2/P-XZHSY(2.8-12mm)(0-STD)Grey
IPC 7 Series	iDS-2CD7546G2/P-XZHSY(8-32mm)(0-STD)/Grey
IPC 7 Series	iDS-2CD7546G2/P-XZHS(2.8-12mm)(0-NEU)
IPC 7 Series	iDS-2CD7586G2/P-XZHS(8-32mm)(0-NEU)
IPC 7 Series	iDS-2CD7586G2/P-XZHS(2.8-12mm)(0-NEU)
IPC 7 Series	iDS-2CD7546G2/P-XZHS(8-32mm)(0-NEU)
IPC 7 Series	iDS-2CD7A46G2/P-IZHSY/5G(2.8-12mm)(0-NEU)
IPC 7 Series	iDS-2CD7A46G2/P-IZHSY/5G(8-32mm)(0-NEU)
IPC 7 Series	iDS-2CD7A86G2/P-IZHSY/5G(2.8-12mm)(0-NEU)
IPC 7 Series	iDS-2CD7A86G2/P-IZHSY/5G(8-32mm)(0-NEU)
IPC 7 Series	iDS-2CD7A46G2/P-IZHSY(6-132mm)(0-NEU)
IPC 7 Series	iDS-2CD7A46G2/P-IZHS/5G(2.8-12mm)(0-NEU)
IPC 7 Series	iDS-2CD7A46G2/P-IZHS/5G(8-32mm)(0-NEU)
IPC 7 Series	iDS-2CD7A86G2/P-IZHS/5G(2.8-12mm)(0-NEU)
IPC 7 Series	iDS-2CD7A86G2/P-IZHS/5G(8-32mm)(0-NEU)
IPC 7 Series	iDS-2CD7A46G2/P-IZHS(6-132mm)(0-NEU)

IPC 7 Series	iDS-2CD7086G2/P-AP(O-NEU)
IPC 7 Series	iDS-2CD7086G2/P-AP(O-STD)
IPC 7 Series	iDS-2CD7086G2/P-AP(O-NEU)(Unpack)
IPC 7 Series	iDS-2CD7086G2/P-AP(O-STD)(Unpack)
IPC 7 Series	iDS-2CD7046G2/P-AP(O-NEU)
IPC 7 Series	iDS-2CD7046G2/P-AP(O-STD)
IPC 7 Series	iDS-2CD7046G2/P-AP(O-NEU)(Unpack)
IPC 7 Series	iDS-2CD7046G2/P-AP(O-STD)(Unpack)
IPC 7 Series	iDS-2CD7587G2/P-XZHSY(2.8-12mm)(O-STD)
IPC 7 Series	iDS-2CD7547G2/P-XZHSY(2.8-12mm)(O-STD)
IPC 7 Series	iDS-2CD7587G2/P-XZHS(2.8-12mm)(O-STD)
IPC 7 Series	iDS-2CD7547G2/P-XZHS(2.8-12mm)(O-STD)
IPC 7 Series	iDS-2CD7A86G2/P-IZHSY/4G(1050)(B)O-STD/LA
IPC 7 Series	iDS-2CD7A86G2/P-IZHS/4G(10-50)(B)O-STD/LA
IPC 7 Series	iDS-2CD7A86G2/P-IZHSY/4G(2812)(B)O-STD/LA
IPC 7 Series	iDS-2CD7A86G2/P-IZHS/4G(10-50mm)(B)O-STD
IPC 7 Series	iDS-2CD7A46G2/P-IZHSY/4G(1050)(B)O-STD/LA
IPC 7 Series	iDS-2CD7A46G2/P-IZHSY/4G(10-50mm)(B)O-STD
IPC 7 Series	iDS-2CD7A46G2/P-IZHSY/4G(8-32mm)(B)O-STD
IPC 7 Series	iDS-2CD7A86G2/P-IZHSY/4G(2.8-12)(B)O-STD
IPC 7 Series	iDS-2CD7A46G2/P-IZHS/4G(2.8-12mm)(B)O-STD
IPC 7 Series	iDS-2CD7A86G2/P-IZHSY/4G(10-50mm)(B)O-STD
IPC 7 Series	iDS-2CD7A86G2/P-IZHS/4G(8-32mm)(B)O-STD
IPC 7 Series	iDS-2CD7A46G2/P-IZHSY/5G(8-32mm)(B)O-STD
IPC 7 Series	iDS-2CD7A86G2/P-IZHSY/5G(10-50mm)(B)O-STD
IPC 7 Series	iDS-2CD7A86G2/P-IZHS/5G(2.8-12mm)(B)O-STD
IPC 7 Series	iDS-2CD7A86G2/P-IZHS/5G(10-50mm)(B)O-STD
IPC 7 Series	iDS-2CD7A46G2/P-IZHS/5G(10-50mm)(B)O-STD

IPC 7 Series	iDS-2CD7A46G2/P-IZHSY/5G(10-50mm)(B)0-STD
IPC 7 Series	iDS-2CD7A46G2/P-IZHS/4G(10-50mm)(B)0-STD
IPC 7 Series	iDS-2CD7A46G2/P-IZHS/5G(2.8-12mm)(B)0-STD
IPC 7 Series	iDS-2CD7587G2/P-XZHSY(2.8-12mm)(eF)0-STD
IPC 7 Series	iDS-2CD7547G2/P-XZHSY(2.8-12mm)(eF)0-STD
IPC 7 Series	iDS-2CD7587G2/P-XZHS(2.8-12mm)(eF)(0-STD)
IPC 7 Series	iDS-2CD7547G2/P-XZHS(2.8-12mm)(eF)(0-STD)
IPC 7 Series	iDS-2CD7587G2/P-XZHSY(2.8-12mm)(0-NEU)
IPC 7 Series	iDS-2CD7547G2/P-XZHSY(2.8-12mm)(0-NEU)
IPC 7 Series	iDS-2CD7587G2/P-XZHS(2.8-12mm)(0-NEU)
IPC 7 Series	iDS-2CD7547G2/P-XZHS(2.8-12mm)(0-NEU)
IPC 7 Series	iDS-2CD7A46G2/P-IZHS/4G(8-32mm)(B)(0-STD)
IPC 7 Series	iDS-2CD7A46G2/P-IZHS/4G(2.8-12)(B)0-STD/LA
IPC 7 Series	iDS-2CD7A46G2/P-IZHS/4G(8-32)(B)0-STD/LA
IPC 7 Series	iDS-2CD7A46G2/P-IZHS/4G(10-50)(B)0-STD/LA
IPC 7 Series	iDS-2CD7A46G2/P-IZHSY/4G(2.8-12)(B)0-STD
IPC 7 Series	iDS-2CD7A46G2/P-IZHSY/4G(2812)(B)0-STD/LA
IPC 7 Series	iDS-2CD7A46G2/P-IZHSY/4G(8-32)(B)0-STD/LA
IPC 7 Series	iDS-2CD7A46G2/P-IZHS/5G(8-32mm)(B)0-STD
IPC 7 Series	iDS-2CD7A46G2/P-IZHSY/5G(2.8-12)(B)0-STD
IPC 7 Series	iDS-2CD7A86G2/P-IZHS/4G(2.8-12mm)(B)0-STD
IPC 7 Series	iDS-2CD7A86G2/P-IZHS/4G(2.8-12)(B)0-STD/LA
IPC 7 Series	iDS-2CD7A86G2/P-IZHS/4G(8-32)(B)0-STD/LA
IPC 7 Series	iDS-2CD7A86G2/P-IZHSY/4G(8-32)(B)0-STD
IPC 7 Series	iDS-2CD7A86G2/P-IZHSY/4G(8-32)(B)0-STD/LA
IPC 7 Series	iDS-2CD7A86G2/P-IZHS/5G(8-32mm)(B)0-STD
IPC 7 Series	iDS-2CD7A86G2/P-IZHSY/5G(2.8-12)(B)0-STD
IPC 7 Series	iDS-2CD7A86G2/P-IZHSY/5G(8-32mm)(B)0-STD

IPC 7 Series	iDS-2CD7A86G2/P-IZHS/4G(2.8-12mm)(B)0-NEU
--------------	---