

Thermal TandemVu Series

V5.5.506

Release note

(2026-01-26)

1. Basic Information

Firmware Version	V5.5.506 build 260109
SDK Version	V7.3 build 260108
Web Component	V5.0.113_R0108 build 20260104
Perimeter Protection Algorithm Version	V2.1.2build20250428

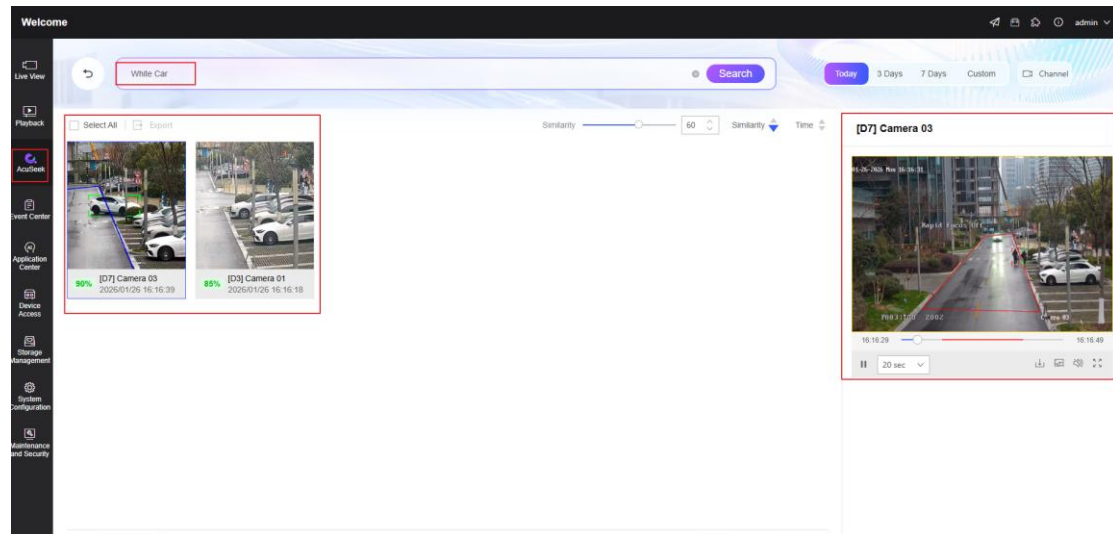
2. New Features

2.1 Perimeter Protection

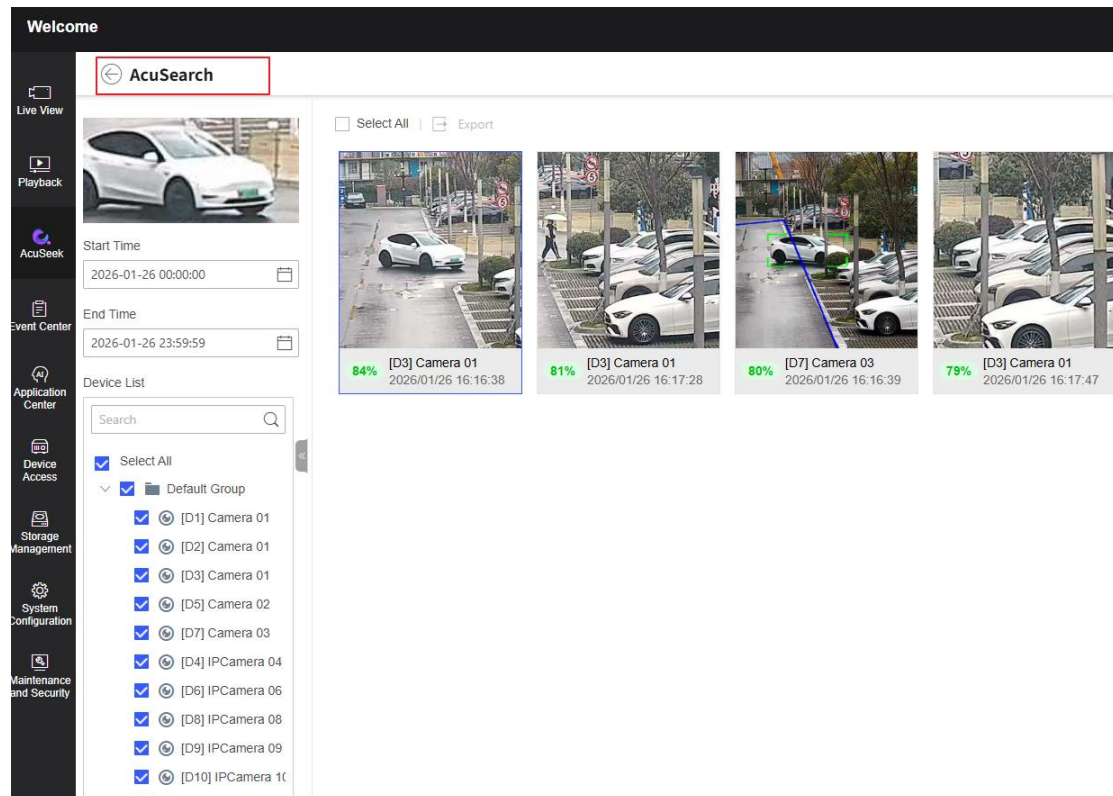
2.1.1 New models of TandemVu Series have been added, with the new fixed camera models supporting Guanlan Large-scale.

2.1.2 All TandemVu Series now support NVR AcuSeek & AcuSearch **(Only NVR I-Vpro Series)**

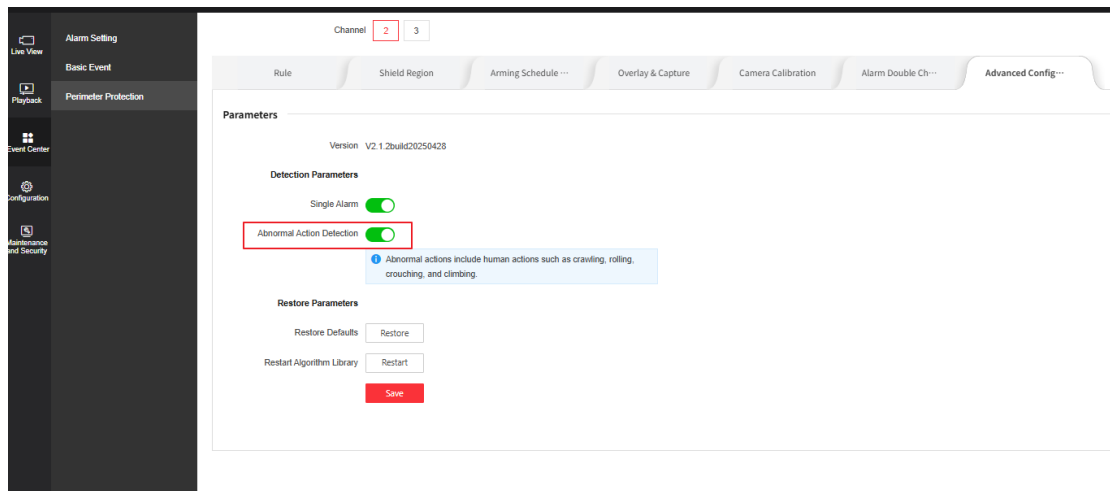
AcuSeek



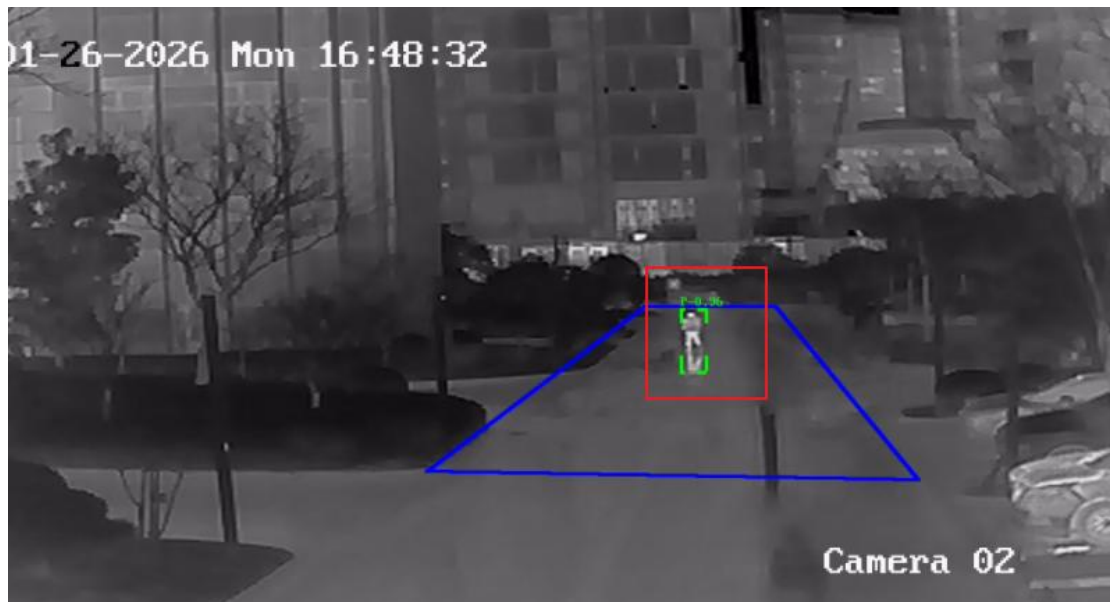
AcuSearch



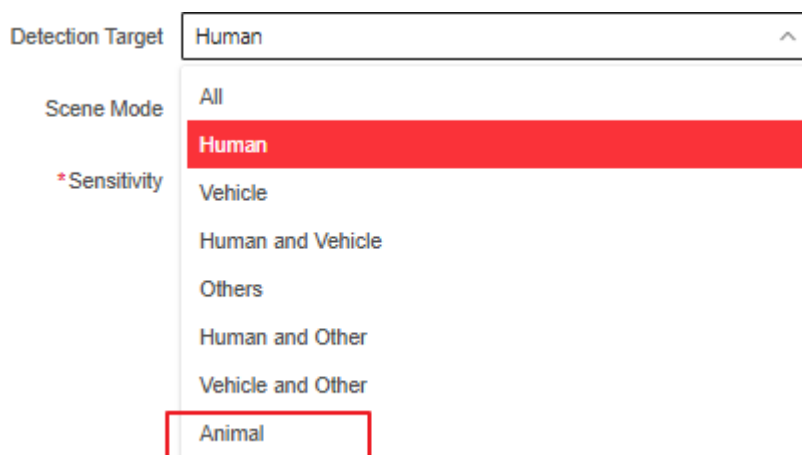
2.1.3 Support Abnormal Action Detection



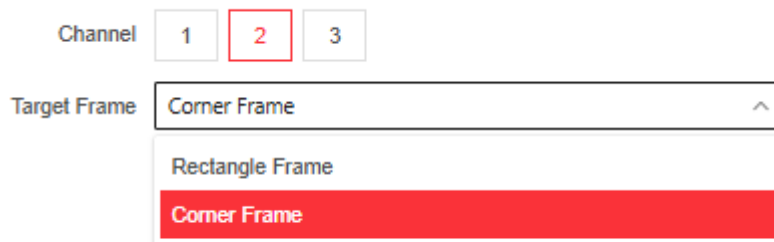
2.1.4 Support Attribute Info: Target attributes and confidence level will overlay on the detection frames in live view and alarm images. Attribute abbreviation: P (Person), V (Vehicle), O (Other).



2.1.5: Support Animal detection

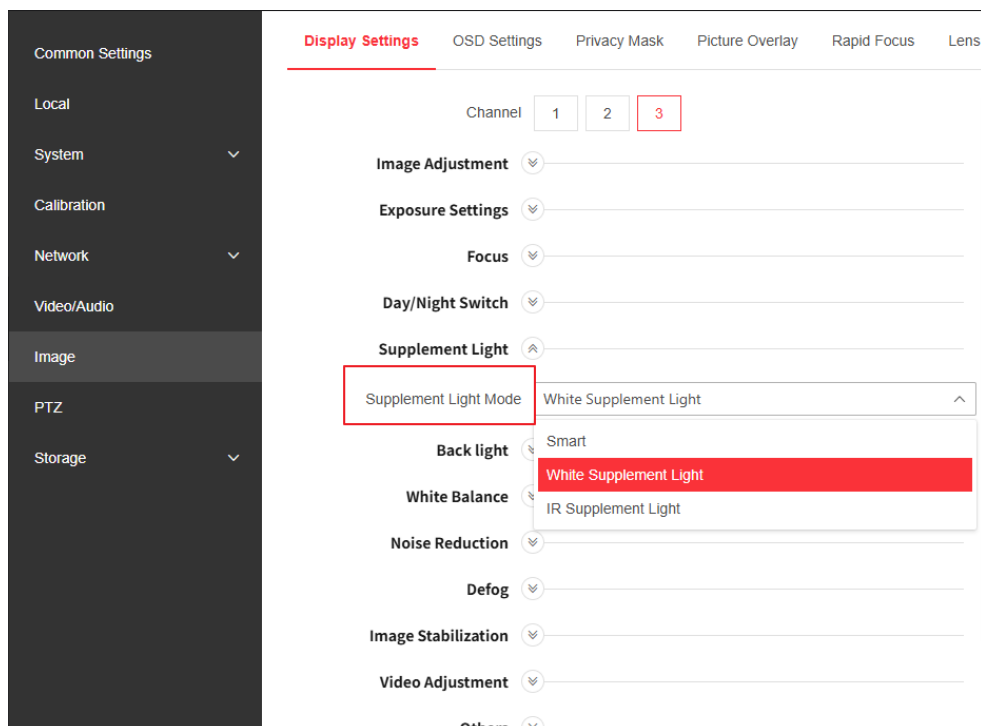


2.1.6: Support different target frame



2.2 Image

2.2.1 Guanlan Large-scale model TandemVu Series support IR Supplement Light, White Supplement Light, and smart light for the PTZ camera.



2.3 Others

2.3.1 Import Guanlan Large-scale model device models (software package names contain MODEL, device names contain T3). Large-scale model devices and non-large-scale model devices do not affect each other, and programs cannot be upgraded interchangeably.

3 Optimized Features

3.1 Optical channel review supports processing tricycle targets.

3.2 Software SDK updated to MarsG2x_MPP_Patch_V1.0.1_S2025072500006 version.

4 Models Involved

Non- Guanlan Large-scale model	HM-TX2840-10/G0/T1
	HM-TX3840-10/G0/T1
	HM-TX3840-15/G0/T1
	HM-TX3840-25/G0/T1
Guanlan Large-scale model	HM-TX2840-10/G1/T3
	HM-TX3840-10/G1/T3
	HM-TX3840-15/G1/T3
	HM-TX3840-25/G1/T3