

Network Speaker

Version: V1.6.0 build250729

Release Note

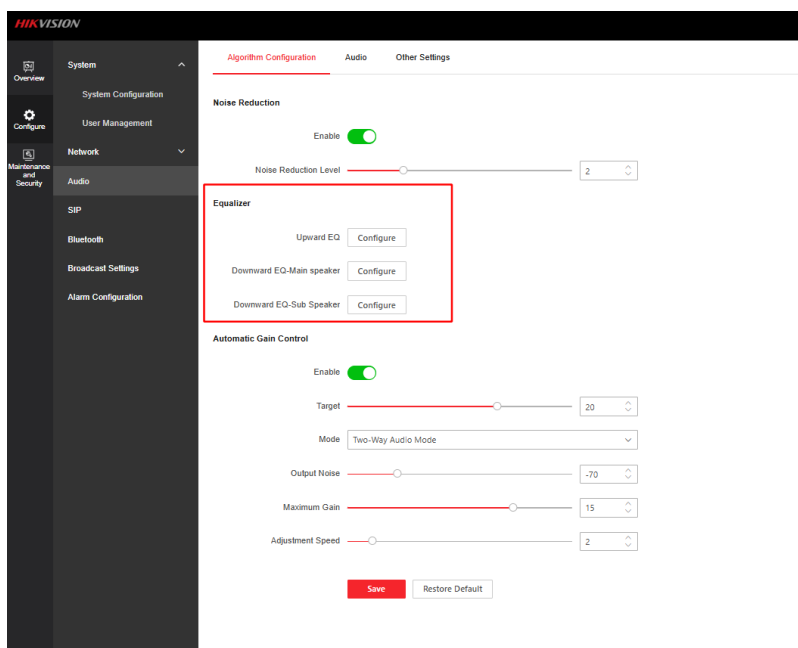
Reason of Upgrade

Add new features and fix known issues.

New Functions

【Support Equalizer Configuration】

Support EQ configuration.

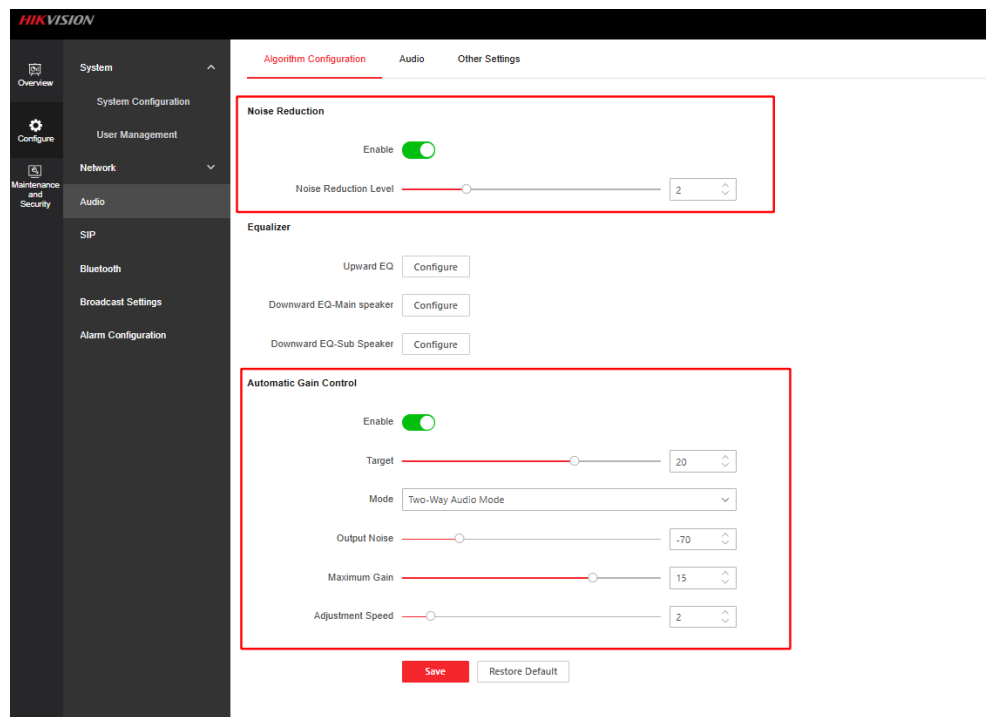




【Support Noise Reduction and Automatic Gain Control】

Support noise reduction configuration and AGC settings.

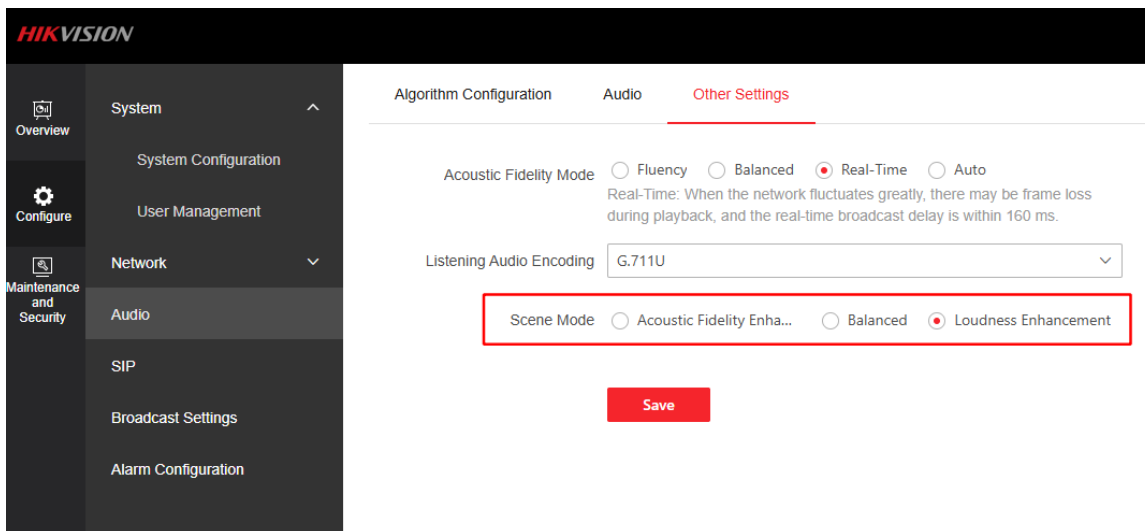
Note: Only devices with microphone support these features.



【Support Scene Mode Selection】

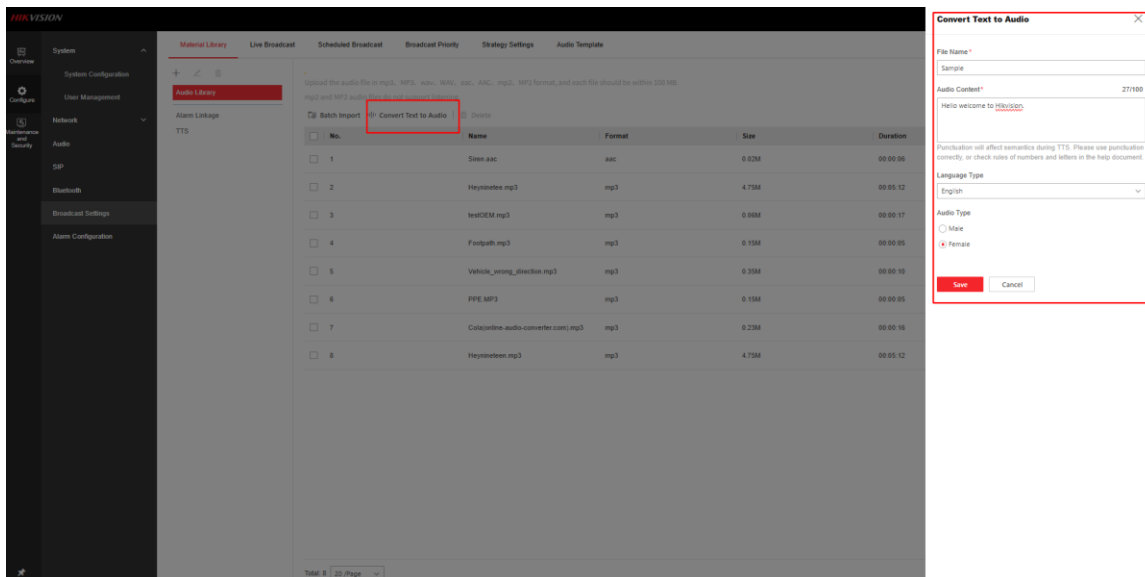
Support scene mode selection to enhance sound pressure level or enhance sound quality.

Note: Only DS-QAZ13XX and DS-QAZ14XX support this feature.



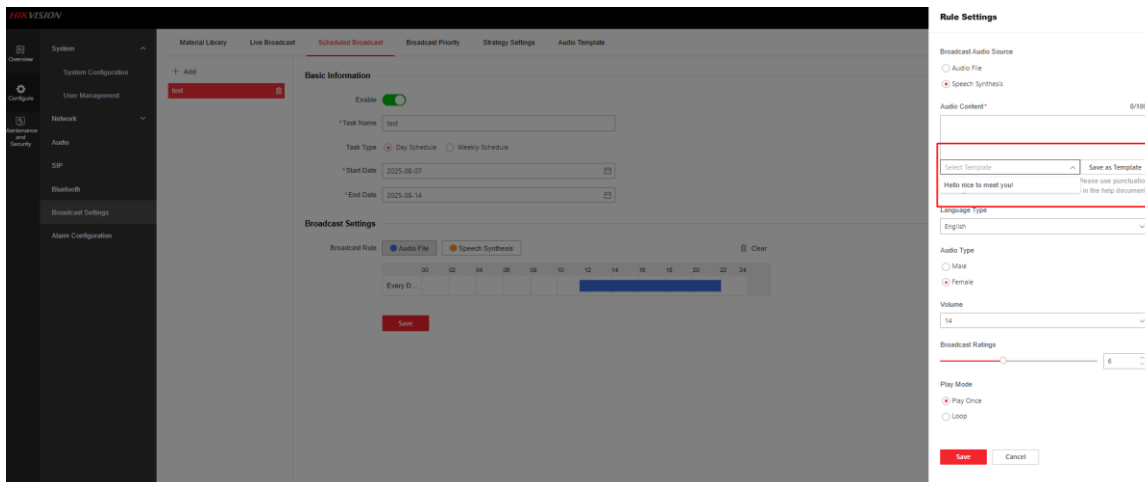
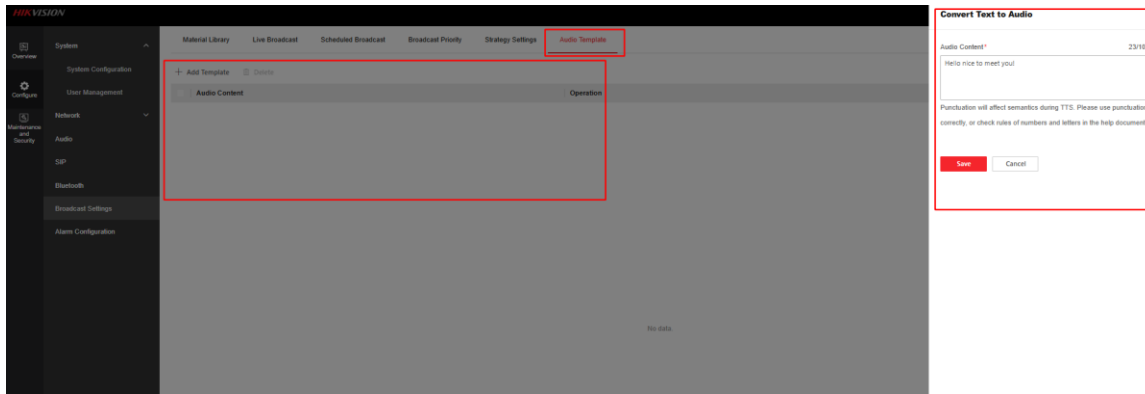
【Support TTS Pre-conversion】

Support convert text to audio file in material library.



【Support TTS Audio Template】

Support the creation of audio templates that can be quickly applied to the schedule settings.



【Support Different Alarm Inputs to Trigger Different Audio Contents】

Support different alarm inputs to trigger different audio contents.

HIKVISION

Overview System System Configuration User Management Network Audio SIP Bluetooth Broadcast Settings Alarm Configuration

Alarm Input Audio Exception Alarm Alarm Server Audio Linkage

Trigger Source Alarm Input1 Alarm Input2

Audio Type Audio File

* Audio File Siren.aac

[Material Library Management](#)

Broadcast Rule

Broadcast Ratings 13

Volume 39

* Play Mode Play Once

Arming Schedule

Arming Schedule Edit

Save

【Support SIP DTMF】

SIP DTMF function is supported now. A button can be set to trigger audio file in speaker via SIP DTMF.

HIKVISION

SIP Registration SIP Call DTMF

+ Add - Delete

No.	Switch	Name	Button	Times of Playing
No data				

Add

Enable DTMF ☒

Name* test

Button* 123

Audio File nokia-tone.mp3

Volume 50

Times of Playing 1

Save Cancel

【Support User Permission Configuration】

Different users can be created to give different operation permissions.

The screenshot displays the Hikvision User Management interface. On the left, a sidebar menu includes 'Overview', 'System' (with 'System Configuration' and 'User Management' sub-items), 'Network', 'Audio', 'ISP', 'Bluetooth', 'Broadcast Settings', and 'Alarm Configuration'. The main area is titled 'User Management' and contains a table with columns 'No.', 'User Name', and 'User Type'. A single entry is shown: '1', 'admin', 'Administrator'. Overlaid on the right is the 'Add User' dialog box. It features a 'User Name' input field, a 'User Type' dropdown menu with 'Operator' selected, a 'Password' input field with a toggle for visibility, and a 'Confirm Password' input field. Below these is a 'Permission Configuration' section with a 'Select All' checkbox and a list of permissions, each with a checkbox and a lock icon: 'Remote: Parameters Settings', 'Remote: Upgrade/Format', 'Remote: Shutdown/Reboot', 'Remote: Notify Surveillance ...', 'Remote: Log Search/Interrog.', 'Remote: Real-Time Speaking', and 'Remote: Bluetooth Settings'. At the bottom of the dialog are 'Save' and 'Cancel' buttons.

No.	User Name	User Type
1	admin	Administrator

Add User
User Name *

User Type
Operator
Operator
Guest
Password *

Confirm Password *

Permission Configuration
☒ Select All
☒ Remote: Parameters Settings
☒ Remote: Upgrade/Format
☒ Remote: Shutdown/Reboot
☒ Remote: Notify Surveillance ...
☒ Remote: Log Search/Interrog.
☒ Remote: Real-Time Speaking
☒ Remote: Bluetooth Settings
Save Cancel

Customer Impact and Recommended Action

This new firmware upgrade is to improve product performance, and will take effect automatically after upgrading from previous versions. We'd like to inform you the above changes. Also, we are sorry for any possible inconvenience of use-habit changes caused by this action.

Note:

- Hikvision has all rights to alter, modify and cancel this notice.
- Hikvision doesn't give any guarantee for old models' stock.
- Hikvision is not liable for any typing or printing errors.
- For special model's change details, please contact our local technical support team.