

DS-3E2728P-H(B) Campus Access Switch



- Supports 802.3at/POE+ power supply standard.
- Supports unique ARP intrusion detection to effectively prevent hackers or attackers from carrying out increasingly prevalent "ARP spoofing attacks" via ARP packets.
- Supports IP Source Guard to prevent illegal address spoofing, including MAC spoofing, IP spoofing, and MAC/IP spoofing, as well as DoS attacks. Additionally, leveraging the trusted port feature of DHCP Snooping effectively eliminates unauthorized DHCP servers, ensuring the authenticity and consistency of the DHCP environment.
- Supports the port security feature set, which can effectively prevent MAC address-based attacks and implement MAC address-based traffic allowance/restriction. Provides 802.1X and MAC authentication methods to authenticate accessing users. Through the application of these functions, comprehensive verification and control over the legitimacy of accessing users can be achieved.
- Supports L2 (Layer 2) to L4 (Layer 4) packet filtering and provides flow classification technology. Offers flexible queue scheduling algorithms that can be configured based on both ports and queues, supporting SP, WRR, and SP+WRR modes.
- Supports bidirectional ACLs for ingress/egress directions, traffic policing, and port/flow mirroring for both ingress and egress directions to monitor packets on specified ports for network detection and troubleshooting.
- Supports port rate limiting and flow rate limiting functions to prevent malicious occupation of network bandwidth, while also providing a means for fine-grained management of network bandwidth.
- Supports SNMPv1/v2/v3 (Simple Network Management Protocol), CLI command line, Web-based network management, and TELNET for more convenient device management. Additionally, supports encrypted methods such as SSH2.0 to enhance management security.
- Supports Energy Efficient Ethernet (EEE). If a port remains idle for a continuous period, the system will set it to energy-saving mode. When packet transmission or reception is required, the port is awakened by periodically sent listening code streams to resume services, achieving energy efficiency.
- Supports lightning protection level of 6KV.
- Supports CPU security protection strategies.

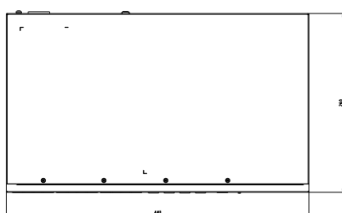
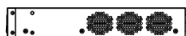
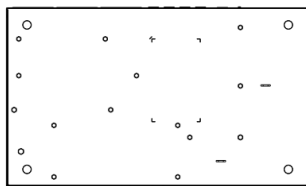
▪ Specification

Hardware Specifications	
Port	24 × Gigabit PoE port, 4 × 10 Gigabit SFP+ port
Switching Capacity	128 Gbps
Packet Forwarding Rate	95.23 Mpps
Power Supply	1 fixed PSU(s)
Fan	3 fixed fan(s)
MAC Address Capacity	16 K
Cache	12 Mbits
Dimensions (W × H × D)	440.0 mm × 43.6 mm × 260.0 mm (17.32" × 1.72" × 10.24")
Net Weight	3.7 kg (8.16 lb)
Gross Weight	3.95 kg (8.71 lb)
Operating Temperature	-5°C to 45°C (23°F to 113°F)
Operating Humidity	5% to 95% (no condensation)
Storage Temperature	-5°C to 70°C (23°F to 158°F)
Storage Humidity	5% to 95% (no condensation)
Installation Mode	1U Rack Mounting (19" width)
Power Supply Method	AC: 100-240 V, 50/60 Hz, 6.0 A
Console Port	1 × Console Port
Power Consumption (Idle)	Single AC: 18 W
Power Consumption (Max. Load)	Single AC: 451 W (PoE: 375 W)
Surge Protection	6 kV
Packing List	Switch × 1 AC Power Cord × 1 L-Shaped Bracket Kit × 1 Console Cable × 1 Grounding Cable × 1 Cable Retention Clip × 1 Rubber Foot × 4 Quick Start Guide × 1 Regulatory Compliance and Safety Information × 1
PoE Power Supply	
PoE Standard	IEEE 802.3af, IEEE 802.3at
PoE Port	PoE: Ports 1 to 24
Max. Port Power	35 W
PoE Power Budget	451W (POE:375W)
PoE Power Pin	End-span: 1/2(-), 3/6(+)
Long-Range PoE	Ports 1 to 24: up to 250 m
PoE Watchdog	Supported
PoE Compatibility Mode	Supported
Service Features	
Flow Control	Supported
Link Aggregation	Supports static aggregation. Supports dynamic aggregation via LACP. Supports cross-device aggregation (MLAG).
Auto-Negotiation	10 Gigabit SFP+ ports 25 to 28: 10G/1G rate adaptation

VLAN	<ul style="list-style-type: none"> Supports 4K VLANs. Supports MAC-based VLAN. Supports MVRP/GVRP. Supports QinQ. Supports flexible QinQ. Supports VLAN mapping.
Multicast	Supports IGMP v1/v2/v3 Snooping
STP	<ul style="list-style-type: none"> Supports STP(IEEE 802.1d). Supports RSTP(IEEE 802.1w). Supports MSTP(IEEE 802.1s).
Private Loop Detection	Supported
Storm Control	Supported
Mirroring	Supports local port mirroring
IPv4 Service	<ul style="list-style-type: none"> Supports Ping. Supports Telnet. Supports FTP. Supports TFTP. Supports Traceroute. Supports DNS. Supports ARP. Supports ARP Proxy.
IPv4 Routing	<ul style="list-style-type: none"> Supports static routing. Supports OSPFv2. Supports RIPv1/v2. Supports policy-based routing (PBR). Supports BFD.
IPv6 Service	<ul style="list-style-type: none"> Supports Ping6. Supports Traceroute6. Supports Neighbor Discovery (ND). Supports DNSv6.
IPv6 Routing	<ul style="list-style-type: none"> Supports IPv6 static routing. Supports policy-based routing (PBR). Supports BFD for IPv6.
DHCP	<ul style="list-style-type: none"> Supports DHCP Client. Supports DHCP Snooping. Supports DHCP Snooping Option 82/DHCP Relay Option 82. Supports DHCPv6 Client. Supports DHCPv6 Snooping.
Cable Detection	<ul style="list-style-type: none"> Supports virtual cable test (VCT). Supports device link detection protocol (DLDP).
Virtualization	Supports stacking, maximum stacking quantity: 9 units
802.1X Authentication	Supported
MAC Authentication	Supported
Portal Authentication	Supported
RADIUS	Supports RADIUS authentication.
TACACS+	Supports TACACS+ authentication.

ACL	<p>Supports L2 to L4 packet filtering.</p> <p>Supports ACL definitions based on source/destination MAC address, source/destination IP address (IPv4/IPv6), IP protocol type, TCP/UDP port number or port range, VLAN ID, etc.</p> <p>Supports Time Range-based ACLs.</p> <p>Supports ACL application globally, on ports, or to VLANs.</p> <p>Supports Basic ACL, Advanced ACL, and MAC ACL configurations.</p> <p>Supports Expert ACLs.</p> <p>Supports inbound, outbound, and VLAN-based ACLs.</p>
QoS	<p>Supports 802.1p/DSCP priority mapping.</p> <p>Supports queue scheduling mechanisms including SP, WRR, SP+WRR.</p> <p>Supports traffic shaping.</p> <p>Supports priority marking and remarking.</p>
Security	<p>Supports DoS attack protection.</p> <p>Supports IP Source Guard (IPv4/IPv6).</p> <p>Supports HTTPS.</p> <p>Supports ARP detection.</p> <p>Supports ARP source suppression.</p> <p>Supports ND snooping.</p> <p>Supports IP-MAC binding.</p> <p>Supports port security.</p>
LLDP	Supports LLDP.
Operation Management	
Status Alarm	Supported
SSH	Supported
Telnet	Supported
SNMP	<p>Supports SNMPv1.</p> <p>Supports SNMPv2.</p> <p>Supports SNMPv3.</p>
Clock Management	Supports NTP.
RMON	Supported
sFlow	Supported
FTP	Supported
TFTP	Supported
SFTP	Supported
Xmodem	Supported
Y.1731	Supported
Approval	
EMC	CE-EMC (EN 55032: 2015+A11: 2020, EN IEC 61000-3-2: 2019, EN 61000-3-3: 2013+A1: 2019, EN 50130-4: 2011+A1: 2014, EN 55035: 2017+A11: 2020)
Safety	CB (IEC 62368-1: 2023, CE-LVD (EN 62368-1: 2024+A11: 2024)
Chemistry	Reach (Regulation (EC) No.1907/2006),WEEE (2012/19/EU),CE-RoHS (2011/65/EU)

▪ Dimension



See Far, Go Further



www.hikvision.com
support@hikvision.com

