

NS-0326P-230(C) 24 Port Fast Ethernet Unmanaged PoE Switch



The device is a layer-2 10/100 Mbps PoE switch, providing PoE power supply technology and fast network design on the basis of network access to ensure stable data upload. The switch supports long range, port isolation, and PoE watchdog functions.

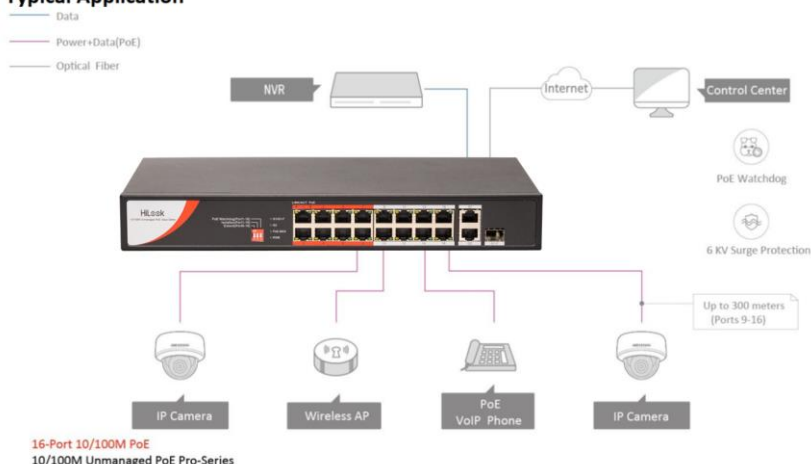
- **Intelligent PoE Management**
When the power supply exceeds the limit, PoE ports intelligently manage the power supply, which extends the switch lifetime.
- **Up to 300 m Long Range PoE Transmission**
The distance between IPCs and switch can reach maximum 300 meters.
- **4/8-Core Adaptive Power Supply with Less Power Loss**
8-core power supply reduces the power loss on cables.
- **6 kV Surge Protection to Improve Reliability in Harsh Environment**
The built-in surge protection device protects the switch from the sudden lightning surge in harsh environment.
- **Design for Video Transmission**
VIP port ensures important data transmission when network congestion occurs.

• Specification

General	
Shell	Metal material
Net Weight	1.90 kg (4.20 lb)
Gross Weight	2.65 kg (5.84 lb)
Dimensions (W × H × D)	335.0 mm × 44.5 mm × 226.0 mm (13.19" × 1.75" × 8.90")
Operating Temperature	0 °C to 45 °C (32 °F to 113 °F)
Storage Temperature	−40 °C to 85 °C (−40 °F to 185 °F)
Operating Humidity	5% to 95% (no condensation)
Relative Humidity	5% to 95% (no condensation)
Power Supply	100~240 V AC, 50/60 Hz, Max. 4 A
Max. Power Consumption	250 W
Power Consumption in Idle	20 W
Installation Mode	Desk-Mounted, Wall-Mounted
Surge Protection	6 kV
Network Parameters	
Ports	24 × 10/100 Mbps PoE port, 1 × Gigabit RJ45 port, 1 × Gigabit combo
MAC Address Table	8 K
Switching Capacity	8.8 Gbps
Packet Forwarding Rate	6.55 Mpps
Internal Cache	4 Mbits
PoE Power Supply	
PoE Standard	IEEE 802.3af; IEEE 802.3at
PoE Power Pin	8-pin power: 1/2(-), 3/6(+), 4/5(+), 7/8(-)
PoE Port	PoE: Ports 1 to 24
Max. Port Power	30 W
PoE Power Budget	230 W
Dialing Function	
Long Range	Ports 17 to 24: up to 300 m. Long range performance may vary depend on camera model or cable condition.
Port Isolation	Ports 1 to 24: port isolation mode to improve network security. Ports in an isolation group cannot communicate with each other, but they can communicate with ports outside the isolation group.
PoE Watchdog	Ports 1 to 24: auto detect and restart the cameras that do not respond.
Approval	
EMC	FCC (47 CFR Part 15, Subpart B), CE-EMC (EN 55032: 2015+A11: 2020, EN IEC 61000-3-2: 2019, EN 61000-3-3: 2013+A1: 2019, EN 50130-4: 2011+A1: 2014, EN 55035: 2017+A11: 2020), IC (ICES-003: Issue 7:2020), RCM (AS/NZS CISPR 32: 2015)
Safety	UL (UL 60950-1), CB (AMD1:2009, AMD2:2013, IEC 62368-1: 2014 (Second Edition), CE-LVD (EN 62368-1: 2014+A11: 2017)
Chemistry	CE-RoHS (2011/65/EU); WEEE (2012/19/EU); Reach (Regulation (EC) No.1907/2006)

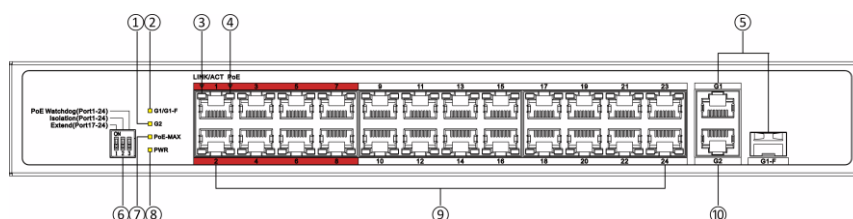
Typical Application

Typical Application



Physical Interface

Front Panel



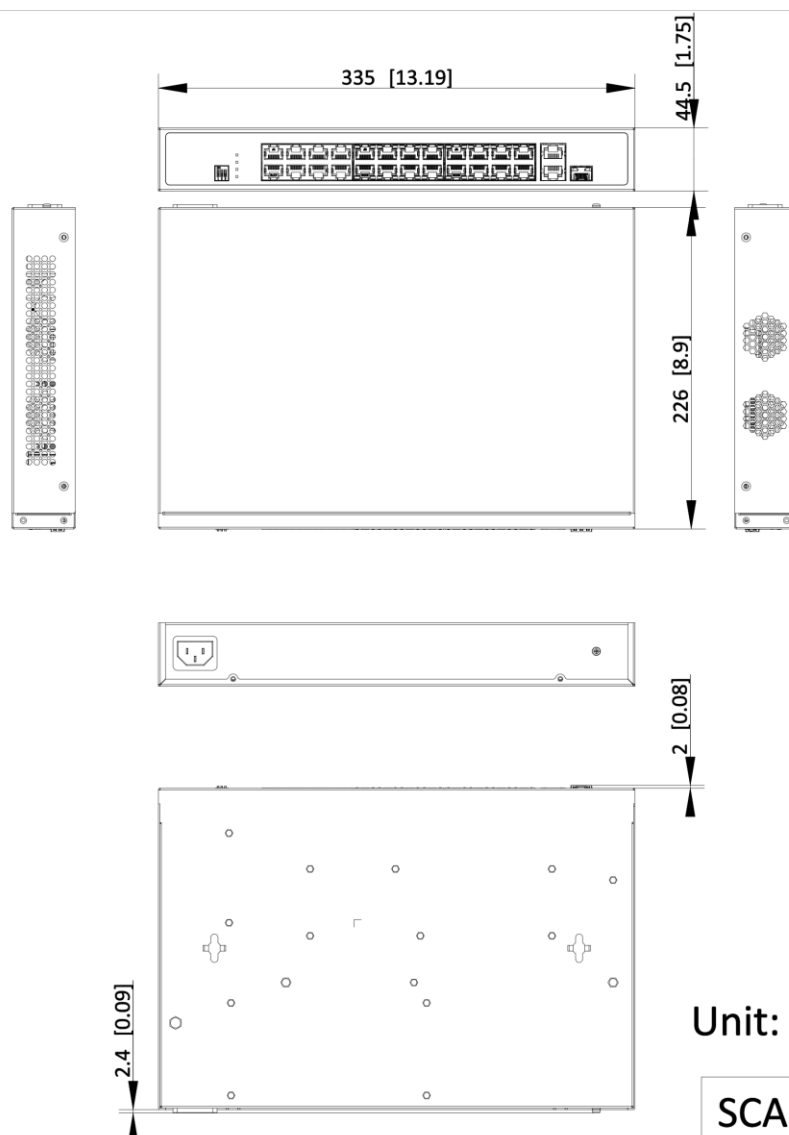
Rear Panel



No.	Indicator/Port	Description
①	G2 Indicator	<ul style="list-style-type: none"> ● Solid on: The port is connected. ● Flashing: The port is transmitting data. ● Unlit: The port is disconnected or connection is abnormal.
②	G1/G1-F Indicator	<ul style="list-style-type: none"> ● Solid on: The port is connected. ● Flashing: The port is transmitting data. ● Unlit: The port is disconnected or connection is abnormal.
③	LINK/ACT Indicator	<ul style="list-style-type: none"> ● Solid on: The port is connected. ● Flashing: The port is transmitting data. ● Unlit: The port is disconnected or connection is abnormal.
④	PoE Indicator	<ul style="list-style-type: none"> ● Solid on: The switch provides power supply to a powered device (PD) normally. ● Unlit: The switch is disconnected to a PD, or provides power supply to a PD abnormally.
⑤	Gigabit Combo (G1/G1-F Port) (Uplink)	<ul style="list-style-type: none"> ● When connected to a network cable, the combo is a RJ45 port. ● When plugged into with an optical module and connected to an optical fiber, the combo functions as a fiber optical port. ● When connected to both the network cable and optical fiber at the same time, the combo works as a fiber optical port.
⑥	DIP Switch	<ul style="list-style-type: none"> ● EXTEND: Enable or disable long-range transmission (EXTEND mode).

		<ul style="list-style-type: none"> - When the DIP switch is set to "ON", the corresponding ports support up to 300 m network transmission with a port rate of 10 Mbps. - When the DIP switch is set to "OFF", the corresponding ports support up to 100 m network transmission with a port rate of 100 Mbps. ● Isolation: Enable or disable port isolation. <ul style="list-style-type: none"> - When the DIP switch is set to "ON", port isolation is enabled. Ports in the same isolation group cannot communicate with each other. Data transmission via each port is isolated to enhance network security. - When the DIP switch is switched to "OFF", port isolation is disabled. Ports can communicate with each other. ● PoE Watchdog: Enable or disable PoE watchdog. <ul style="list-style-type: none"> - When the DIP switch is set to "ON", PoE watchdog is enabled to automatically detect device connection statuses of corresponding ports and restart ports in case of communication failures. - When the DIP switch is set to "OFF", PoE watchdog is disabled. Corresponding ports are no longer automatically detected and restarted in case of communication failures.
⑦	PoE-MAX Indicator	<ul style="list-style-type: none"> ● Solid on: The output power of the switch is about to reach or has reached the upper limit. The power supply may be abnormal if more devices are connected. ● Unlit: The switch supplies power to a PD normally and its output power does not reach the upper limit. Note: The PoE-MAX indicator will be unlit in 5 seconds after the output power of the switch returns to normal.
⑧	PWR Indicator	<ul style="list-style-type: none"> ● Solid on: The switch is powered on normally. ● Unlit: No power supply connected or power supply is abnormal.
⑨	10/100 Mbps PoE RJ45 Port	Used for connection to a PD via a network cable.
⑩	Gigabit RJ45 Port (G2 Port) (Uplink)	Used for connection to another device via a network cable.
⑪	Grounding Terminal	Used for connection to a grounding cable to protect the switch from lightning.
⑫	Power Supply	Use the attached AC power cord to connect the switch to a socket.

Dimension



Unit: mm [inch]

SCALE	1:1
-------	-----

See Far, Go Further



www.hikvision.com
support@hikvision.com

