

**DS-D4518CB162-2FQ  
DS-D4518CB162-2FQ 162" LED AIO (Non-Touch)**

The LED multi-media display is a standardized display product, featuring a self-illuminating display, comprehensive information release, remote management and control, miracast, etc. With its fashionable and simple design, the terminal boasts good performance in various aspects. It can bring a wide view without light reflection even in strong light. The integrated management system enables you to remotely control terminals, manage programs, and perform miracast by a PC or mobile phone. Operation through a remote control is also allowed. The LED multi-media display is equipped with Hikvision's professional image processing technology, including Pix Code (algorithm for optimizing the details of low-grayscale image), Pix Master (algorithm for image enhancement), Color Master (algorithm for color fidelity), HDR display, 3D display and other research and development achievements. With clear and vivid images, the device is applicable to scenes with 100 to 200 inch wide view, such as large-scale shopping malls, business buildings, financial halls, airports, high-speed railway stations, government halls, news release halls, exhibition halls, etc.

- **High Integration Design:** The mainboard integrates the control system, Android, network processing, and video interface modules into a single unit, significantly boosting system reliability. It allows flexible plug-and-play module installation for easy setup and maintenance.
- **Lightweight Solution:** Leveraging high-load signal processing technology, the design enables full-screen data transmission using just one internal signal cable.
- **Innovative Structural Design:** Featuring carefully selected Scandinavian-inspired fabric and an ultra-narrow bezel, the product delivers a refined aesthetic. The innovative quick-lock mechanism ensures secure connections with a simple twist, enhancing alignment precision.
- **Easy and Quick Installation:** The cabinet employs a segmented pre-assembly design, facilitating modular column-based installation for quick and efficient setup.
- **Enhanced Performance:** Seamless switching between Android and Windows systems improves adaptability across various scenarios. The WonderOS 3.0 system is optimized for large-screen UI interactions, providing an intuitive user experience.
- **Versatile Functionality:** Supports multi-device wireless screen sharing, whiteboard capabilities, conference recording, welcome message display, and other practical features for diverse applications.

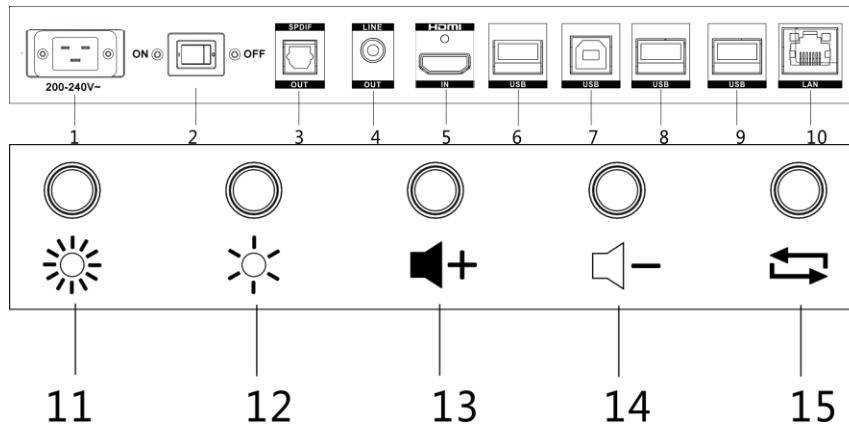
## ▪ Specification

Product Model	
Product Model	DS-D4518CB162-2FQ
Display	
White Balance Brightness	600 cd/m <sup>2</sup>
Color Temperature	3000-10000K adjustable
Viewing Angle	160° (H)/160° (V)
Brightness Uniformity	± 0.003Cx , Cy
Color Uniformity	≥ 97%
Screen Size	162inch ( 413.0cm)
Display Resolution	1920 × 1080
Contrast Ratio	3000:1
Active Screen Area	7.3 m <sup>2</sup>
Display Ratio	16:9
Optimal View Distance	3 m
Built-in System	
Operation System	Android 12, windows 10 (optional with OPS accessories)
CPU	Android: Max. 1.5 GHz, A76 × 4 + A55 × 4 Windows: i5-11390H
Memory	Android: 16GB Windows: 16GB
Built-in Storage	Android: 256 GB Windows: 256 GB
NIC	Integrated gigabit LAN with router mode enabled
CPU Clock Speed	2.4 GHz
Wireless	Supports concurrent operation in station and access point (AP) mode, enabling Wi-Fi hotspot functionality.
Bluetooth	Integrated BLE module compliant with Bluetooth 5.1 and backward-compatible versions.
Interface	
Video & Audio Input	LINE IN × 1, HDMI IN × 4
Video & Audio Output	LINE OUT × 1, SPDIF OUT × 1 , HDMI OUT × 1
Data Transmission Interface	Front Panel Interfaces: USB 3.0 × 2, Type-C × 1 Internal Slot at Bottom: USB 2.0 × 1
Control Interface	1 × RS232 serial port
Speaker	Built-in 2*18 W speaker
Cabinet	
Pixel Configuration	SMD Triad LED (with glue)
Pixel Pitch	1.875 mm
Pixel Density	284444 dots/m <sup>2</sup>
Cabinet Material	Aluminum alloy
Maintenance Method	Front maintenance

Processing Performance	
Driving Method	Constant current driving
Frame Frequency	30 Hz/60 Hz
Refresh Rate	3840 Hz
Grey Level	16 bit
Key Material	
Power Specification	4.2 V/40 A (Cabinet Power Supply), 19 V/8 A (Control Power Supply)
Power	
Standby Consumption	≤ 0.5 W
Short Circuit	220V, 20A
Max. Consumption	≤ 3000 W
Average Consumption	≤ 1000 W
Input Voltage	110~240 VAC , 50/60 Hz (110V with Low-Voltage Power Cord)
Working Environment	
Working Temperature	-10 to 40 °C (14 to 104 °F)
Working Humidity	20% to 80% RH (non-condensing)
Storage Temperature	-10 to 50 °C (14 to 122 °F)
Storage Humidity	10% to 90% RH (non-condensing)
General	
Product Dimension (W × H × D)	With base: 3611.4 (W) mm × 2807.82 (H) mm × 733.5 (D) mm Without base: 3611.4 (W) mm × 2150.7 (H) mm × 47.1 (D) mm Screen size: 3600 (W) mm × 2025(H) mm
Mounting Type	Wall Mounting / Mobile Floor Standing Bracket Mounting (Packaging Includes Wall-mount Bracket by default.)
Packing Method	1 Wooden case package
Net Weight	211.7 kg (466.72 lb.)
Package Dimensions (W × H × D)	3611.4 (W) mm × 2807.82 (H) mm × 733.5 (D) mm (142.18 " × 110.54 " × 28.88 ")
Packing List	LED Module Spare Parts ×4, Multilingual Manual ×1, Bottom Panel Connector X1, Wall Mounting Bracket X1, Cables (OPS Power cable, OPS Signal Cable, Main Power Cable, Ethernet Cable, Cabinet Cascase Power Cable), Accessories (Lamps, IC, Screws, Expansion Bolt, Tools, etc.)
Panel	
Indicator	Red: The device is standby. Blue: The device is powered on.
Button	On/Off/Sleep button × 1

## ▪ Physical Interface

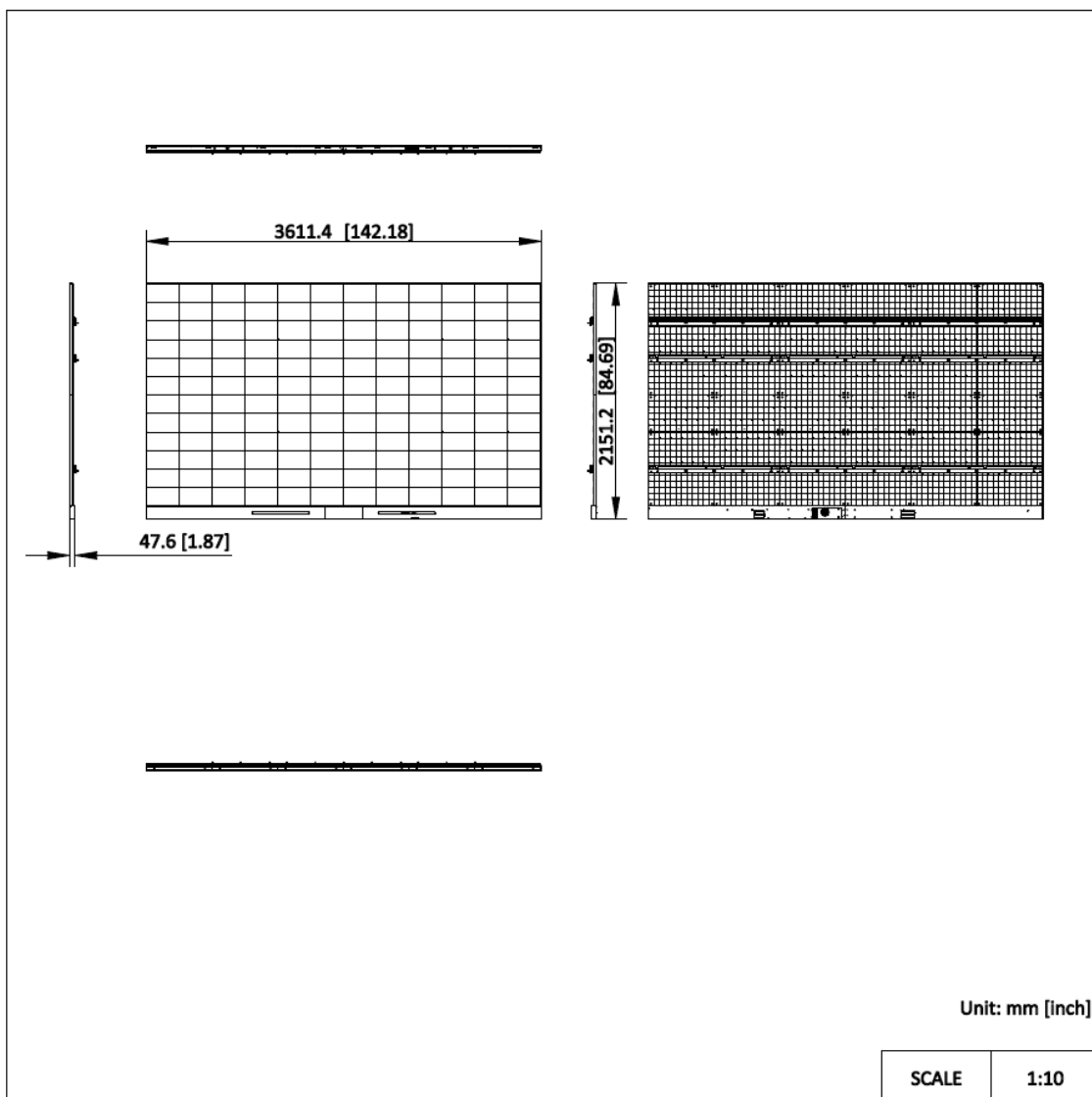
No.	Description	No.	Description
1	200 to 240 VAC Power Input	2	AC Power Switch
3	SPDIF Audio Output	4	Audio Output
5	HDMI Digital Signal Input	6/8/9	USB 3.0 Interface
7	USB-B 3.0 Interface	10	Network Interface
11	Increase Brightness	12	Decrease Brightness
13	Increase Volume	14	Decrease Volume
15	Switch Signals		

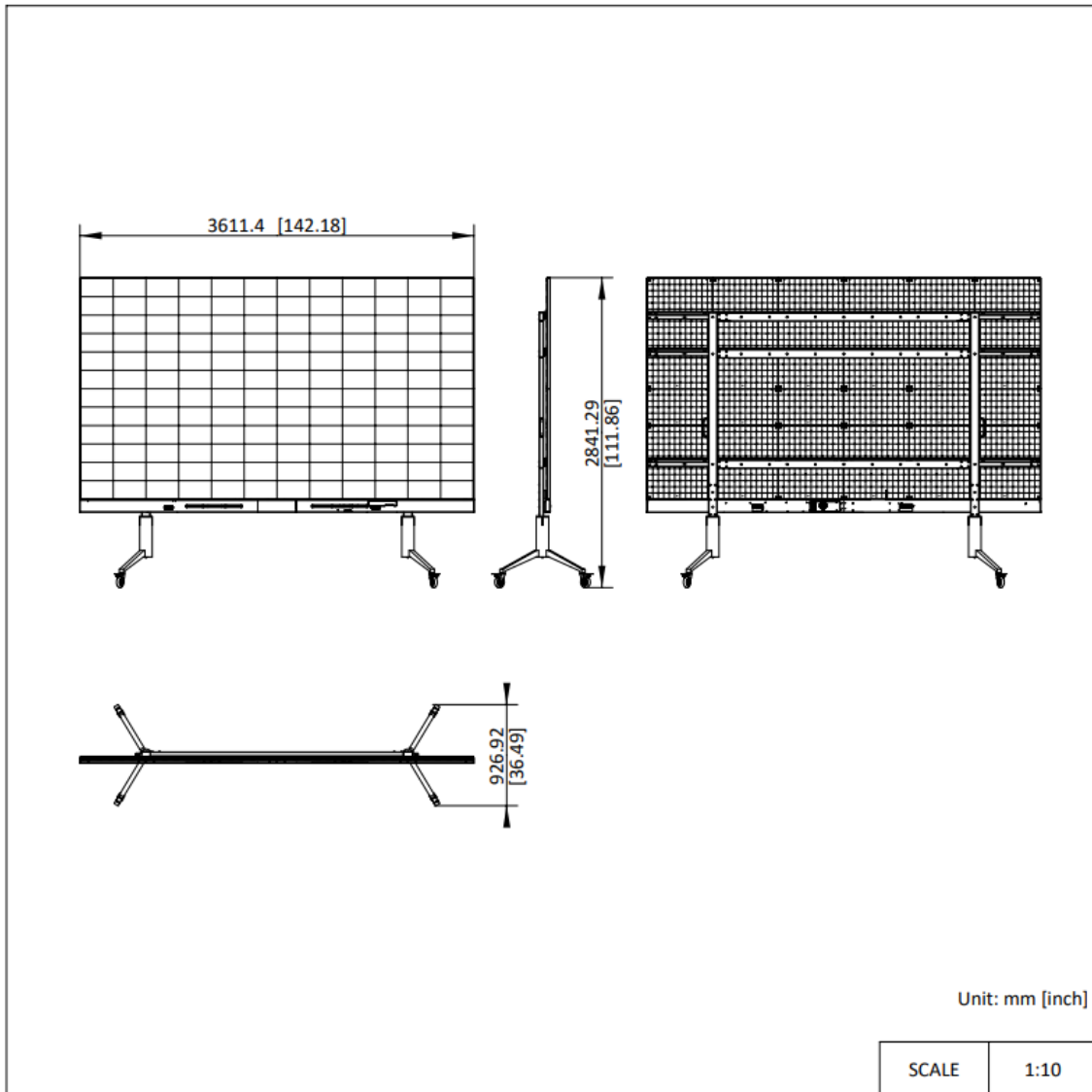


▪ **Available Model**

DS-D4518CB162-2FQ(All-in-one)

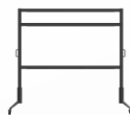
▪ **Dimension**





- Accessory
- Optional

**DP-D40XCB22-6X6-  
Q7-NS-Q9-ZY/162**



# See Far, Go Further



[www.hikvision.com](http://www.hikvision.com)  
[support@hikvision.com](mailto:support@hikvision.com)

