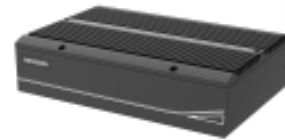


DS-TPE304-S**Charge-Management Entrance Control Terminal**

- Cascade management: One can manage up to 4 lanes, and up to 5 devices can be cascaded
- Strong adaptability: fully closed structure, no fan heat dissipation design, can be used at -10~50° working temperature
- Multi network interface design: 8 network interfaces on the internal network support the access of a large number of network devices and saving switch costs; 2 gigabit network port on the external network support network fault tolerance and dual network IP setting, dual network isolation and other applications
- Remote access: Supports Internet remote access to devices, remote troubleshooting, remote log download, and remote device upgrade
- Local display control: Support VGA/HDMI display, standard mouse and keyboard input control, plug and play, convenient and fast
- Standard SDK interface: The standard SDK protocol supports interconnecting with cloud platforms and has strong external scalability
- Huge pictures storage: 4T 3.5" HDD and 128GB SSD
- Multi other interface: 2 RS-232, 1 RS-485, 2 alarm in, 2 alarm out, 4 USB, 1 audio in, 1 audio out
- Built-in Parking Management System software

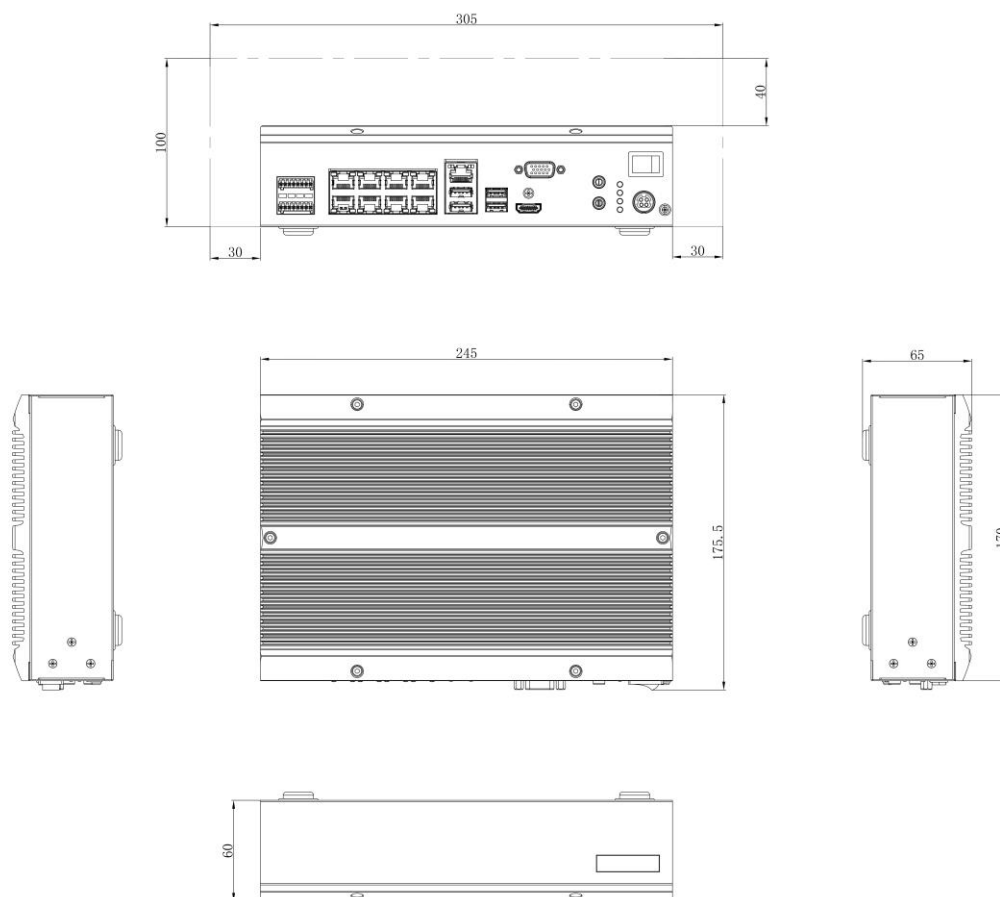
▪ Specification

Terminal	
CPU	J6412, Elkhart Lake Platform Processor, 2 GHz
Memory	4 GB
Storage	3.5" 4T Surveillance-Level HDD+ 128GB SSD
Interface	
Indicator	4 Indicators (1 x System Indicator, 1 x Hard Disk Status Indicator, 1 x Power Indicator, 1 x Alarm Indicator)
Audio	1 x Audio Input (MIC IN); 1 x Audio Output (AUDIO OUT)
Video Output	1 x HDMI, 1 x VGA
Alarm Input	2 x Alarm Input (ALARM IN)
Alarm Output	2 x Alarm Output (ALARM OUT)
RS-232	2 x RS-232 Interface
RS-485	1 x RS-485 Interface
USB	2 x USB 2.0 Interface, 2 x USB 3.0 Interface
Network Interface	8 x 10 Mbps/100 Mbps Self-Adaptive Interface, supporting connecting with switch; 1 x Independent 100 Mbps/1000 Mbps Self-Adaptive Interface, supporting network isolation
General	
Material	Black Aluminum Material
Power Supply	12V DC /5A
Power Consumption	Max.: 50 W Average: 25 W
Working Temperature and Humidity	-10 °C to 50 °C (14 °F to 122 °F); 10 % to 95% (No Condensation)
Storage Temperature and Humidity	-20 °C to 70 °C (-4 °F to 158 °F); 10 % to 95% (No Condensation)
Dimensions	245 × 170 × 65 mm (9.65 × 6.69 × 2.56 inch)
Dimensions (with Package)	450 × 240 × 105 mm (17.7 × 9.45 × 4.1 inch)
Weight	2 kg (4.4 lb.)
Weight (with Package)	2.5 kg (5.5 lb.)

▪ Available Model

DS-TPE304-S(4T+128G SSD)(P)

▪ Dimension



Headquarters

No.555 Qianmo Road, Binjiang District,
Hangzhou 310051, China
T +86-571-8807-5998
www.hikvision.com



Follow us on social media to get the latest product and solution information.



Hikvision



HikvisionHQ



HikvisionHQ



Hikvision_Global



Hikvision
Corporate Channel



hikvisionhq