

## iDS-TCS817-C/5721/316 Bi-Spectrum Traffic Incident Detection Camera



### DeepinView

- 8 MP (1/1.2" CMOS), 3840 × 2160 @ 25 fps
- Color: 0.001 Lux@(F1.4, AGC ON)
- H.265, H.264, MJPEG
- 60 dB SNR
- 3D DNR
- Built-in thermal and visual imaging
- Traffic flow detection
- Incident detection
- Alarm I/O
- Two defined streams
- Built-in micro SD/TF card, up to 128 GB
- IP66
- Supports side mounting with convenient installation and debug

## Superiority

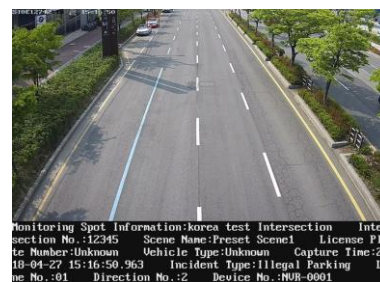
- Traffic flow data collection
  - Lane flow
  - Lane speed
  - Space headway
  - Time headway
  - Lane time occupancy rate
  - Lane space occupancy rate
  - Queuing length
  - Traffic status
- Capable of detecting multiple incidents
  - Driving on the lane line detection
  - Lane change detection
  - Wrong-way driving detection
  - Stopped vehicle detection
  - Emergency lane occupation
  - Roadblock detection
  - Construction detection
  - Fallen Object detection
  - Pedestrians detection
  - Congestion detection
  - Fire/Smoke in tunnel detection

## Application

- Traffic flow control
- Traffic monitoring
- Traffic incident detection

## Scenarios

- Highway
- Tunnel
- Toll station
- Urban road



Stopped Vehicle



Pedestrian



Roadblock



Wrong-Way Driving

## Specification

<b>Visible Camera</b>		<b>iDS-TCS817-C</b>
Image Sensor		8 MP (1/1.2" CMOS)
Min. Illumination		Color: 0.001 Lux@(F1.4, AGC ON) , 0.0005 Lux with IR
Shutter Speed		50 to 20,000 us
Day & Night		IR cut filter
Digital Noise Reduction		2D/3D DNR
WDR		60 dB
<b>Lens</b>		
Focal Length		5.7 to 21 mm or 15-50 mm(Optional)
Aperture		1550: F1.4-C 5721: F1.5-C
Focus		Manual
FOV		5721: CS-Mount, Horizontal: 106.5° to 33.1°, Vertical: 60.2° to 18.7°, Diagonal: 121.4° to 37.8° 1550: CS-Mount, Horizontal: 42.7° to 13.7°, Vertical: 23.4° to 7.6°, Diagonal: 49.7 to 15.8°
<b>Thermal Imaging</b>		
Max Image Dimension		640 × 512
Focal Length		10 mm (default), Optional: 15 mm, 25 mm, 50 mm
Measuring Range		0 °C ~ 550 °C
Measuring Distance		25 m
FOV		10 mm(default): F:1.0, Horizontal: 72.0°, Vertical: 56.1°, Diagonal: 97.4° 15 mm: F:1.0, Horizontal: 42.4°, Vertical: 33.6°, Diagonal: 55.2° 25 mm: F:1.0, Horizontal: 24.6°, Vertical: 18.5°, Diagonal: 31.3° 50 mm: F:1.0, Horizontal: 12.3°, Vertical: 9.8°, Diagonal: 15.6°
<b>Compression Standard</b>		
Video Compression		Main stream: H.265/H.264/MJPEG Sub-stream: H.265/H.264/MJPEG
H.264 Type		Baseline profile/Main profile/High profile
H.265 Type		Baseline profile/Main profile/High profile
Video Bit Rate		32 Kbps to 16 Mbps
<b>Smart Feature</b>		
Coverage		Up to 3 lanes
Trigger Mode		Video trigger
Supplement Light Type		External strobe/flash/continuous light
Smart Function		Vehicle type, lane flow, lane speed, space headway, time headway, lane time occupancy rate, lane space occupancy rate, queuing length, and traffic status Driving on the lane line, lane change, wrong-way driving, stopped vehicle, Emergency lane occupation, roadblock, construction, fallen object, pedestrians, congestion, fire/smoke in tunnel detection
<b>Image</b>		
Max. Resolution		3840 × 2160
Main Stream		50 Hz: 25 fps (3840 × 2160, 1920 × 1080, 1280 × 720) 60 Hz: 30 fps (3840 × 2160, 1920 × 1080, 1280 × 720)
Sub-Stream		1920 × 1080, 704 × 576

Image Enhancement	BLC, HLC, 3D DNR
Image Settings	Saturation, brightness, contrast, sharpness, AGC, and white balance are adjustable by client software or web browser.
SVC	H.264 and H.265 encoding
Day/Night Switch	Auto/Scheduled/Triggered by alarm in
Picture Overlay	Logo picture can be overlaid on video with 128 × 128 24-bit bmp format.
<b>Network</b>	
Network Storage	Micro SD/TF card (128 GB), local storage and CVR, NVR, ANR
Alarm Trigger	HDD error, network disconnected, IP address conflicted, vehicle detector exception, traffic light detector exception
Protocols	TCP/IP, HTTP, HTTPS, FTP, DNS, RTP, RTSP, RTCP, NTP, IPv6, UDP
Security Measures	Password protection, HTTPS encryption, digest authentication for HTTP/HTTPS
General Function	One-key reset, three streams, heartbeat, password protection, watermark
API	ISAPI, SDK
Simultaneous Live View	Up to 6 channels
User/Host	Up to 32 users 3 user levels: administrator, operator, and user
Client	HikCentral Master, HikCentral Master Lite
Web Browser	IE7+
<b>Interface</b>	
Communication Interface	1 RJ45 10 M/100 M/1000 M self-adaptive Ethernet interface 1 1000 M fiber interface 1 RS-485 interface (half duplex, HIKVISION)
Alarm	1 output interface
On-board storage	Built-in micro SD/TF card, up to 128 GB
GPS	Optional
Temperature Sensor	Optional
<b>General</b>	
Operating System	Linux
Operating Conditions	Temperature: -30 °C to 70 °C (-22 °F to 158 °F) Humidity: 95% or less (non-condensing)
Power Supply	24 VDC ± 20% (without power adapter), POE (802.3at, class 4)
Protection Level	IP66
Heater	Supported
Material	Stainless steel 316L
Dimensions	490 × 315 × 154 mm (19.3 × 12.4 × 6.1 inch)
Weight	Approx. 10.4 ± 0.5 kg (22.9 ± 1.1 lb.)
Power Consumption	MAX. 24 W

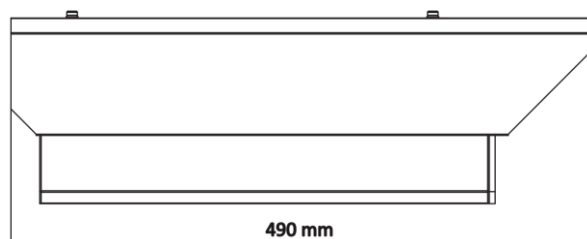
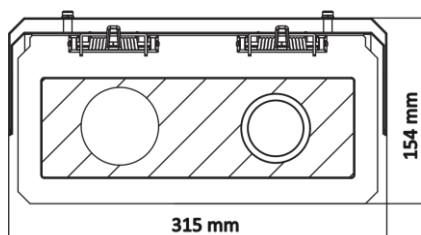
\* Listed resolutions are only selectable options. It does not mean that all streams can work at their maximum resolution at the same time.

## Available Model


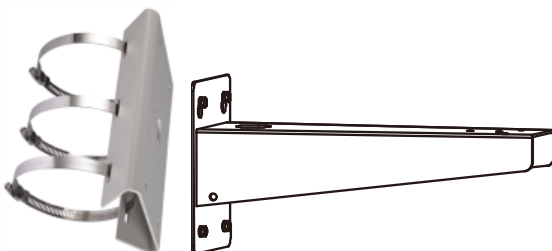
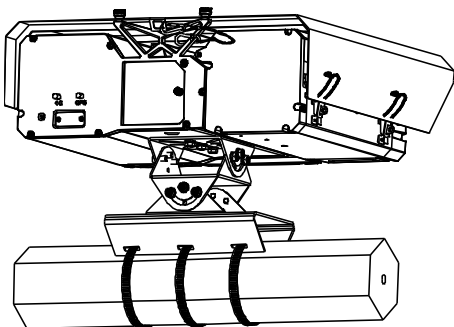
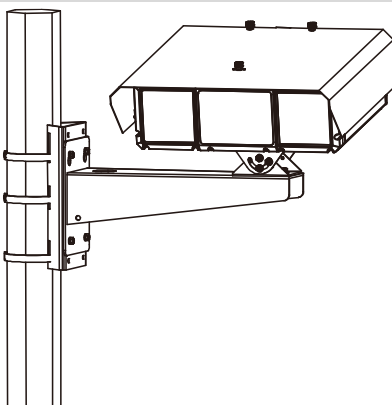
iDS-TCS817-C/5721/316

\*Please decide whether to use anti-corrosion devices or matched hoops and brackets according to the actual working environment.

## Dimension



## Accessory

DS-1278ZJ-HWB Horizontal Pole Mount	DS-1275ZJ/HWB, DS-1701ZJ Vertical Pole Mount
	
	

### Headquarters

No.555 Qianmo Road, Binjiang District,  
Hangzhou 310051, China  
T +86-571-8807-5998  
[www.hikvision.com](http://www.hikvision.com)



Follow us on social media to get the latest product and solution information.

